



RACING AND WAGERING WESTERN AUSTRALIA

Western Australian Racing Industry Status Report

2003/2004

January 2005

TABLE OF CONTENTS

Western Australian	1
Racing Industry Status Report	1
Background	3
Introduction.....	3
Structure of the Racing Industry in Western Australia	4
Legislation	5
Racing and Wagering Western Australia Act 2003	5
Gaming and Wagering Commission Act 1987	5
Betting Control Act 1954	5
Bookmakers Betting Levy Act	5
Gaming and Betting (Contracts and Securities) Act	5
Legislation Covering Racing Clubs.....	6
Racing Restriction Act 2003	6
Racing Penalties (Appeals) Act 1990.....	6
Racing and Wagering Western Australia Betting Tax Act 2003.....	6
Changes to Legislation During 2003/2004	7
Racing and Wagering Western Australia Act 2003.....	7
Racing and Gambling Legislation Amendment and Repeal Act 2003	7
Racing Restriction Act 2003	7
Racing and Wagering Western Australia Tax Act 2003	7
Racing and Wagering Western Australia Regulations 2003	8
Racing and Wagering Western Australia Regulations 2004	8
Totalisator Agency Board (Betting) Amendment Regulations 2003.....	8
Betting Control Amendment Regulation (No. 3) 2003	8
Betting Control Amendment Regulations (No. 4) 2003.....	9
Betting Control Amendment Regulations 2004.....	9
Oral History	10
Racing Statistics	11
Race Meetings and Races	11
Number of Starters	11
Number of Horses/Greyhounds that Raced.....	12
Stakemoney Analysis.....	12
Number of Registered Persons	13
Breeding Comparison	13
Club by Club Racing Statistics 03/04	14
Racing Penalties Appeal Tribunal Information	18
Financial	19
TAB/RWWA Financial Performance	19
TAB/RWWA Distribution to Racing Codes	20
Intracode TAB/RWWA Distribution.....	21
Ratio of Stakes Allocation to TAB/RWWA Distribution	21
Unclaimed TAB/RWWA Dividends	21
Summary of Development Grants.....	22
Summary of Training Track Grants	25
On-Course Betting Information.....	26
Bookmakers Turnover and Levy Paid	26
Sportsbetting Turnover.....	27
Telephone Betting Turnover	27
Internet Betting Turnover	28
On-Course Totalisator Turnover	29
Number of Licensed Bookmakers	30
Issued/Terminated	30
License Category	30
Number of Bookmaker Employee Licenses.....	30
Number of Bookmaker Manager Licenses*	30
Off-Course Betting Information.....	31
TAB Turnover by Racing Code.....	31
TAB Turnover on WA Racing 03/04 Club by Club.....	31
TAB Meetings Covered by Code and Location.....	33
Number and Type of TAB Agencies	34

Background

Introduction

Racing and Wagering Western Australia (RWVA), at the request of the Department of Racing, Gaming & Liquor, have undertaken the responsibility of producing the Racing Industry Status Report on an ongoing basis.

The purpose of the report is to provide information that will give industry participants and other interested parties, a snapshot of the status of the WA Racing Industry for the year. The information provided will cover racing and wagering statistics for all three codes.

The report incorporates and complements information published by each of the three racing codes, Racing and Wagering Western Australia and the Tasmanian Gaming Commission in its Australian Gambling Statistics report (telephone 03 6233 2926 for details).

I would like to take this opportunity to thank those officers from the Western Australian Turf Club, the Western Australian Trotting Association and the Western Australian Greyhound Racing Authority, for their assistance in providing data for this report. I also acknowledge the officers from the racing section of the Department of Racing, Gaming and Liquor for their efforts in producing the report.



Ray Bennett
Chief Executive Officer
Racing and Wagering Western Australia

7 January 2005

Disclaimer

Every effort has been made to provide accurate information in this report and sources have been asked to verify the information provided. However, no warranty as to the accuracy of the information can be provided and users are cautioned in this regard. In particular, different reporting schedules and accounting practices, and variances in procedures from state to state have, in some tables, necessitated manipulation of the data to provide useful comparisons.

Structure of the Racing Industry in Western Australia

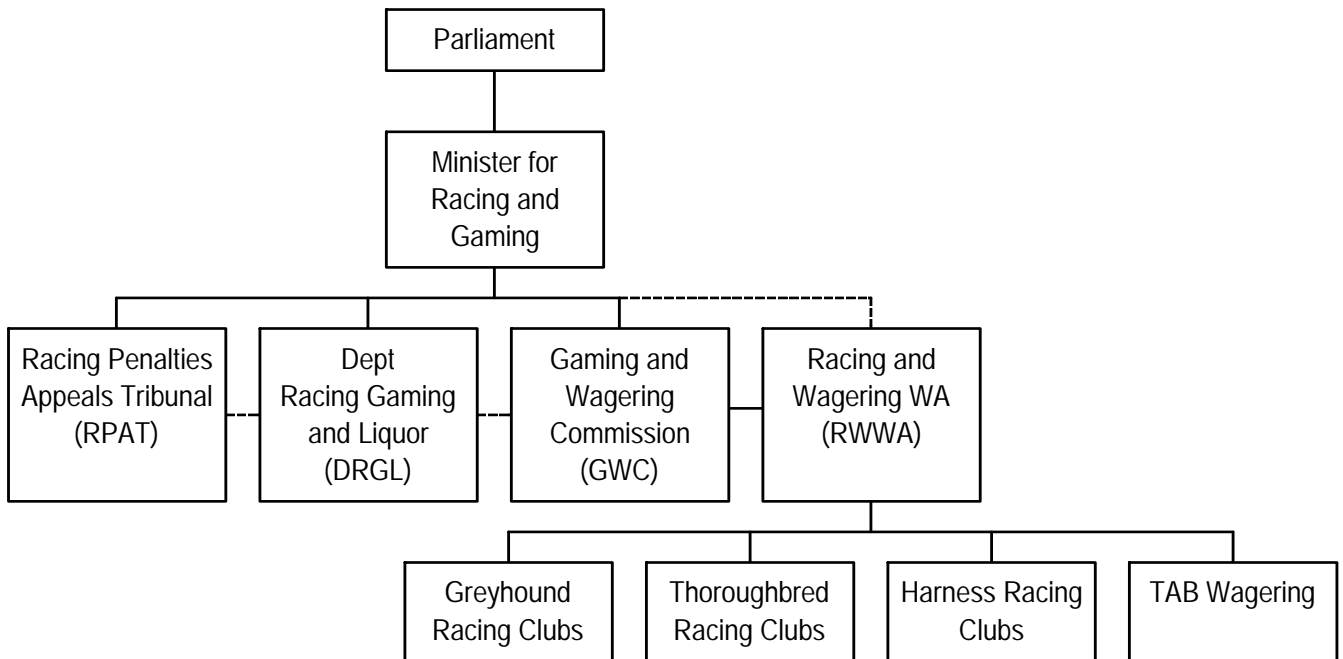
Legislation to establish Racing and Wagering Western Australia (RWWA) as the controlling authority for thoroughbred, harness and greyhound racing in Western Australia, together with responsibility for off-course TAB wagering, was assented to on 26 June 2003 and came into effect on 1 August 2003. Initially, RWWA's functions were limited to those relating to the conduct of racing. The legislative provisions to support RWWA assuming responsibility for the TAB came into effect on 30 January 2004. As a result of this restructure the Western Australian Turf Club, Western Australian Trotting Association, and the Western Australian Greyhound Racing Association have relinquished their principal club responsibilities.

In addition:

- the Betting Control Board was abolished effective 30 January 2004 and its responsibilities transferred to the Gaming Commission, which has been renamed the Gaming and Wagering Commission; and
- the Racecourse Development Trust was abolished effective 1 August 2003 with responsibility for racecourse development being a RWWA function.

The new racing industry structure is detailed below.

Structure of the Racing Industry in Western Australia



Legislation

The racing industry is governed by a number of pieces of legislation, which provide the framework for activities within the industry. The following is a brief description of each of the individual pieces of legislation.

Racing and Wagering Western Australia Act 2003

The *Racing and Wagering Western Australia Act 2003* establishes Racing and Wagering Western Australia as the controlling authority for thoroughbred, harness and greyhound racing in Western Australia. It also provides RWWA with the authority to conduct off-course TAB betting.

Gaming and Wagering Commission Act 1987

The *Gaming and Wagering Commission Act 1987* established the Gaming and Wagering Commission to regulate the conduct of gaming and wagering in Western Australia under the Gaming and Wagering Commission Act, Betting Control Act or Casino Control Act.

Betting Control Act 1954

The *Betting Control Act 1954* regulates the conduct of on and off-course betting by bookmakers and on-course totalisators. It also sets down procedures for the assessment, collection and allocation of bookmakers' betting levy.

Bookmakers Betting Levy Act

This Act prescribes the rate of betting levy (formerly tax) payable by bookmakers under the *Betting Control Act*. In 1989 the rate was reduced from two per cent on the first \$100,000 and 2.5 per cent thereafter, to a flat rate of 2.25 per cent. Following a significant decline in betting turnover the Government introduced a policy to reduce the rate to two per cent by annual rebate effective from 1 July 1993. This change has now been enacted in legislation and the tax has been redefined as a levy.

A further amendment to the *Bookmakers Betting Levy Act* was assented to and came into operation on 30 June 1998. The purpose of the amendment was to reduce the betting turnover levy payable by sports bookmakers operating under Section 4B of the *Betting Control Act* from 2.0 per cent to 0.5 per cent. The amendment brought the Western Australian rate into line with Western Australia's major interstate competitors.

Currently racing clubs retain all betting levies payable on race betting and 50 per cent of the levy payable on sports betting. The remaining sports betting levy is distributed by the Betting Control Board to sporting organisations as directed by the Minister for Sport and Recreation.

Gaming and Betting (Contracts and Securities) Act

The *Gaming and Betting (Contracts and Securities) Act* consolidated the law in respect of contracts, agreements and securities and thereby established the law governing the recovery of debts relating to gaming and betting. This Act makes all gaming and betting contracts or agreements null and void unless they arise out of gaming or betting under the Betting Control Act or other Acts which legalise gaming and betting in this State, such as the TAB Betting Act, Lotteries (Control) Act, Casino Control Act, etc. Therefore, bets made under and pursuant to these Acts are now recoverable.

It also deems securities drawn in consideration of money won at gaming and betting not conducted or made pursuant to the above Acts to be drawn for an illegal consideration. This means that the winner of such a bet cannot enforce the security, however, a third party may, provided that party gave value for the cheque without knowing it was given in satisfaction of a gaming debt. These particular provisions restate the law, as it existed prior to the enactment of the legislation.

Legislation Covering Racing Clubs

A number of racing clubs are governed, to some extent, by an Act of Parliament.

The *Western Australian Greyhound Racing Association Act 1981* establishes the Western Australian Greyhound Racing Association (WAGRA) to conduct greyhound racing in Western Australia. The WAGRA is:

- required to report annually to the Minister;
- subject to general direction by the Minister;
- subject to audit by the Auditor General; and
- required to conform with the *Financial Administration and Audit Act*.

The *Western Australian Trotting Association Act 1946* constitutes and incorporates the Western Australian Trotting Association (WATA) to conduct harness racing in Western Australia. The WATA is required to submit a copy of the annual accounts to the Minister on or before the fifteenth day of September in each year but is not subject to any other government controls or requirements.

The *Western Australian Turf Club Act 1892* is a private act designed principally to:

- vest, in the name of the Chairman of the WA Turf Club, the land on which Ascot Racecourse is established;
- stipulate the uses for which that land may be put;
- subject to approval by the Governor, allow the Club to make by-laws to manage its affairs and all race meetings conducted at the course; and
- require the Club to submit a copy of its annual accounts to the Department of Racing, Gaming and Liquor.

The WA Turf Club is not subject to any other government controls or reporting requirements. However, the Minister may appoint an auditor to audit the Club's accounts.

The *Western Australian Turf Club (Property) Act 1944* was promulgated to provide the framework for the Club to acquire real and personal property for the purposes of the Club.

This act was amended in September 1997 to permit the Club to dispose of real and personal property.

Racing Restriction Act 2003

The *Racing Restriction Act 2003* stipulates that no thoroughbred, harness or greyhound race may be conducted for stake or prize, or for the purposes of betting, without a licence issued by RWWA. Under the Act the Minister has the authority to intervene in a dispute over race dates but only where RWWA proposes to make a change to the program of race meetings customarily conducted in the metropolitan area and the change may necessitate a reduction in the number of race meetings customarily conducted outside the metropolitan area.

This Act also provides a mechanism for racing of other breeds of horse to be authorised by the Minister.

Racing Penalties (Appeals) Act 1990

This Act came into operation in 1990 and establishes the Racing Penalties Appeal Tribunal to hear and determine appeals in relation to determinations from the controlling authority of the three racing codes (RWWA).

The Tribunal comprises a Chairperson and up to two members selected from a panel of members, or where the regulations so prescribe, by the Chairperson sitting alone. Amendments to the Racing Penalties (Appeals) Amendment Regulations came into force in September 1998 to enlarge the scope of matters that can be heard by the Chairperson sitting alone. Those matters are a penalty involving a suspension or disqualification of a person for three months or less and/or a fine of \$2,000 or less, and the disqualification of any runner.

The Minister for Racing and Gaming appoints the Chairperson and the panel of members. The current Chairperson is Mr Dan Mossenson.

Racing and Wagering Western Australia Betting Tax Act 2003

This Act sets the amount of tax that RWWA is required to pay to Government in relation to the conduct of off-course wagering. Currently, the rate is set at 5.0 per cent of all totalisator betting, 2.0 per cent of fixed odds race betting and 0.5 per cent of fixed odds sports betting.

The Government currently pays a rebate of 0.5 per cent of tax.

Changes to Legislation During 2003/2004

Racing and Wagering Western Australia Act 2003

The Racing and Wagering Western Australia Act 2003 came into operation on 1 August 2003. The purpose of the Act is to implement the restructure of the racing industry governance system in Western Australia by merging the principal club functions of the Western Australian Turf Club, Western Australian Trotting Association and Western Australian Greyhound Racing Association, together with the off-course betting activities of the TAB, into a single controlling authority to be known as Racing and Wagering Western Australia (RWVA).

Specifically, to achieve the restructure the following changes occurred:

- RWVA was established as the controlling authority for thoroughbred, harness and greyhound racing in Western Australia;
- the Western Australian Turf Club, the Western Australian Trotting Association, and the Western Australian Greyhound Racing Association remained as racing clubs, responsible for the conduct of racing activities at their respective venues;
- the TAB was abolished and RWVA assumed responsibility for the conduct of off-course betting from 30 January 2004;
- the Racecourse Development Trust was abolished and the development of racing and training infrastructure became a function of RWVA. The Trust's obligations, unallocated funds and funding source (unclaimed TAB dividends and refunds) were transferred to RWVA.

To complement the restructure, the Betting Control Board was abolished and its functions transferred to the Gaming Commission of Western Australia to form the Gaming and Wagering Commission of Western Australia on 30 January 2004.

To manage these changes, in addition to *Racing and Wagering Western Australia Act 2003*, the following Acts have also been assented to:

- Racing and Gambling Legislation Amendment and Repeal Act 2003;
- Racing Restriction Act 2003; and
- Racing and Wagering Western Australia Tax Act 2003.

Racing and Gambling Legislation Amendment and Repeal Act 2003

On 1 August 2003, the Racing and Gambling Legislation Amendment and Repeal Act 2003 came into operation. The purpose of the Act is to provide the transitional provisions needed to manage the establishment of RWVA and the consequential amendments needed to other Acts to recognise RWVA and to achieve the complementary aspects of the governance structure.

Racing Restriction Act 2003

The Racing Restriction Act 2003 came into operation on 1 August 2003. The Act is essentially a re-draft of the Racing Restriction Act 1917, and stipulates that no thoroughbred, harness or greyhound race for a stake or prize, or for the purposes of betting, may be held unless the race is licensed by Racing and Wagering Western Australia (RWVA) and is held at a racecourse that is licensed by RWVA.

The Act maintains the present authority for the Minister to issue a direction to the relevant controlling authority arising from a dispute over any proposed change to the program of thoroughbred or harness racing meetings conducted in the metropolitan area that may necessitate a reduction in the number of race meetings conducted outside the metropolitan area.

The Act also implements a National Competition Policy Review recommendation to provide for the establishment, with the approval of the Minister, of an "approved racing organisation" as the controlling authority for horse racing that is not thoroughbred or harness racing.

Racing and Wagering Western Australia Tax Act 2003

On 30 January 2004, the Racing and Wagering Western Australia Tax Act 2003 came into operation. The purpose of the Act is to apply the taxation regime that is currently in place in respect of the TAB under the Totalisator Agency Board Betting Tax Act 1960 to RWVA's off-course wagering turnover.

Racing and Wagering Western Australia Regulations 2003

These regulations, implemented on 1 August 2003:

- Establish licensing provisions for directors and key employees under sections 14 and 24 of the *Racing and Wagering Western Australia Act 2003*; and
- Detail arrangements for the payment of the annual fee payable by RWWA to the Gaming Commission to cover the cost of the Commission's regulatory functions in respect of RWWA, under section 53 of the *Racing and Wagering Western Australia Act 2003*,

In respect of the RWWA licensing regulations, the licence application fees will be the same as those applying in respect of Burswood Casino key employees.

Racing and Wagering Western Australia Regulations 2004

These regulations came into operation on 30 January 2004 and;

- Provide for the regulation of off-course wagering activities of RWWA;
- Establish the procedures under section 52 of the RWWA Act for RWWA to notify the Gaming and Wagering Commission of its intention to establish a totalisator agency; and
- Prescribe the racing bodies RWWA is required to consult with in accordance with section 82(2) of the RWWA Act.

Totalisator Agency Board (Betting) Amendment Regulations 2003

These amendment regulations came into operation on 26 September 2003 and include the following Eastern States racing venues in the list of racecourses prescribed for the purposes of betting by the TAB;

- Mortlake, Victoria
- Edenhope, Victoria
- Penshurst, Victoria
- The Meadows, Victoria
- Grenfell, New South Wales
- Sapphire Coast, New South Wales
- Tumut, New South Wales
- Narrandera, New South Wales
- Tweed Heads, New South Wales
- Junee, New South Wales
- Temora, New South Wales
- Grafton, New South Wales
- Nowra, New South Wales
- Maitland, New South Wales
- Singleton, New South Wales
- Casino, New South Wales
- Redcliffe, Queensland
- Albion Park, Queensland
- Beenleigh, Queensland
- Bordertown, South Australia

Betting Control Amendment Regulation (No. 3) 2003

These amendment regulations came into operation on 1 January 2004 and increased the Betting Control Board's prescribed fees and charges (following a review in accordance with the provisions of section 55(b) of the *Financial Administration and Audit Act 1985*).

Betting Control Amendment Regulations (No. 4) 2003

These amendment regulations came into operation on 11 November 2003 and permit the display of a business name in lieu of the bookmakers name, provided it does not misrepresent the nature of service offered by the bookmaker and that the business name is acceptable to the Betting Control Board.

Betting Control Amendment Regulations 2004

These amendment regulations came into operation on 30 January 2004 and provide a table of deductions for race day betting, establish provision to enable minimum wager obligations to be set and to amend regulation 61(2) of the *Betting Control Regulations 1978* to enable time limits for bookmakers to exhibit odds on runners in each race.

Oral History

In co-operation with the Oral History Section of the Western Australian Batty Library and members of the racing industry, the oral histories of the following racing identities have been produced:

- ♦ Allan John Scahill Western Australian Totalisator Agency Board; WA Turf Club; and Horse racing.
- ♦ Fred Kersley Western Australian Trotting Industry from 1929; and Trainer/Reinsman 1930-1972
- ♦ Ray Holloway Involvement in the trotting industry from 1947; and Secretary of the Western Australian Trotting Association from 1972 until 1991
- ♦ Sir Charles Court Racing industry view from his early experiences and later as a member of Parliament; and Minister and Premier of Western Australia.
- ♦ Sir Desmond O'Neil Western Australian Greyhound Racing Authority - Chairman 1981 - 1984; and Lotteries Commission - Chairman 1980 – 1983.
- ♦ Sir Ernest Lee-Steere Member of the Committee of the WA Turf Club from 1948 - 1984, the last 21 years as Chairman; and Horse breeding and racing.
- ♦ Lionel Jack Richards Assistant to the Senior Auditor of O L Haines who conducted the auditing of the WA Turf Club and Automatic Totalisators Ltd.
- ♦ Rod Evans Prominent and long-standing former racing and trotting bookmaker.
- ♦ Desmond John Wells Early experience in legalised betting shops during 1950's and subsequent experience in TAB agencies in 1960's & 1970's.

Racing Statistics

Race Meetings and Races

CODE: THOROUGHBREDS	Number of Race Meetings				Number of Races			
	Metro	Provincial	Country	Total	Metro	Provincial	Country	Total
01/02	91	129	76	296	739	982	466	2 187
02/03	89	130	73	292	713	972	445	2 130
03/04	90	129	74	293	727	978	447	2 152

CODE: HARNESS	Number of Race meetings				Number of Races			
	Metro	Country TAB	Country Non TAB	Total	Metro	Country TAB	Country Non TAB	Total
01/02	78	182	-	260	684	1 368	-	2 052
02/03	94	184	-	278	824	1 369	-	2 193
03/04	86	189	-	275	806	1 435	-	2 241

CODE: GREYHOUNDS	Number of Race meetings				Number of Races			
	Metro	Provincial/Country TAB	Country Non TAB	Total	Metro	Provincial/Country TAB	Country Non TAB	Total
01/02	105	139	-	244	1 134	1 533	-	2 667
02/03	104	152	-	256	1 115	1 646	-	2 761
03/04	95	165	-	260	1 035	1 821	-	2 856

Number of Starters

Year	Thoroughbreds			Harness		Greyhounds
	Metro	Provincial	Country	Metro	Country	
01/02	8 375	10 644	3 215	7 414	13 658	20 875
02/03	8 048	10 221	2 901	8 521	13 177	21 805
03/04	8 251	10 486	3 003	8 250	13 608	22 395

Sources: RWWA

Number of Horses/Greyhounds that Raced

Year	Thoroughbreds	Harness	Greyhounds
01/02	3 260	1 974	1 452
02/03	3 193	1 972	1 512
03/04	3 241	2 038	1 595

Stakemoney Analysis

CODE: THOROUGHBREDS	Stakes Paid – Metro \$	Stakes Paid – Provincial \$	Stakes Paid – Country \$	Total Stakes Paid \$
01/02	19 619 398	6 963 060	2 357 845	28 940 303
02/03	19 379 452	7 093 920	2 201 290	28 674 662
03/04	21 214 250	7 904 850	2 443 530	31 562 630

CODE: HARNESS	Stakes Paid – Metro \$	Stakes Paid – Country \$	Total Stakes Paid \$
01/02	7 476 925	5 603 979	13 080 904
02/03	7 930 621	5 182 345	13 112 966
03/04	9 739 548	5 676 729	15 416 277

CODE: GREYHOUNDS	Total Stakes Paid \$
01/02	▪ 4 061 969
02/03	▪ 4 528 592
03/04	▪ 4 938 946

- Due to 25% (approx) of Cannington race meetings being Provincial Class Racing, individual total stakes for Metro and Provincial/Country are unavailable, although the total stakes paid per track is referred to in the statistical information contained on Page 18.

Sources: *RWWA Racing - Thoroughbreds*
RWWA Racing - Harness
RWWA Racing - Greyhounds

Number of Registered Persons

Year	Thoroughbreds			Harness		Greyhounds
	Trainers	Jockeys	Apprentices	Trainers	Drivers	Trainers
01/02	684	98	35	800	567	379
02/03	701	90	31	756	545	389
03/04	610	84	36	735	510	316

Breeding Comparison

		03/04	02/03	01/02
THOROUGHBREDS	- number of foals born	1 553	1 524	1 613
	- average yearling price	\$25 184	\$24 791	\$18 478
	- highest yearling price	\$135 000	\$150 000	\$92 500
HARNESS	- number of foals born	622	620	662
	- average yearling price	\$9 306	\$11 373	\$8 343
	- highest yearling price	\$35 000	\$64 000	\$42 000
GREYHOUNDS	- number of pups born	523	539	736
	- average price		*	*
	- highest price		*	*

Notes: * No Greyhound auctions are held in WA thus that information is unavailable.

Sources: *RWWA Racing - Thoroughbreds*
RWWA Racing - Harness
RWWA Racing - Greyhounds
Australian Stud Book
Magic Millions

Club by Club Racing Statistics 03/04

Club	No of Race Meetings	No of Races Conducted	No of Starters	Total Stakes (Inc subsidies) \$	Average stakes per race \$	Total Attendances	Total RWWA Dist \$ (inc Rebates/exc Grants)
METRO THOROUGHBREDS							
WA Turf Club^ - Prime	56	452	5 063	17 295 000	38 263	173 317	
- Mid-week	34	275	3 188	3 919 250	14 252	19 385	
Total Metro Thoroughbreds	90	727	8 251	21 214 250	29 181	192 702	25 777 964
PROVINCIAL THOROUGHBREDS							
Albany Racing Club	12	83	771	452 175	5 448	5 684	528 681
Bunbury Turf Club	20	161	1 852	1 466 650	9 110	32 149	1 430 035
Coolgardie Racing Club	2	14	140	194 500	13 893	2 065	109 554
Geraldton Turf Club	14	98	997	562 225	5 737	16 050	600 646
Kalgoorlie – Boulder Racing Club	23	160	1 631	1 482 625	9 266	31 138	1 181 037
Mount Barker Turf Club	8	56	543	404 275	7 219	3 644	383 969
Narrogin Race Club	5	39	348	234 600	6 015	No Record	184 894
Northam Race Club	23	188	2 053	1 445 075	7 687	18 284	1 609 218
Pinjarra Race Club	18	152	1 876	1 480 150	9 738	20 683	1 556 189
York-Beverley Turf Club	4	27	275	182 575	6 762	500	324 479
Total Provincial Thoroughbreds	129	978	10 486	7 904 850	8 083	130 197	7 908 702
COUNTRY THOROUGHBREDS							
Ashburton Race Club (Onslow)	1	8	41	45 475	5 684	No Record	40 637
Broome Turf Club	9	55	444	484 122	8 802	21 620	260 303
Carnarvon Race Club	10	59	425	315 320	5 344	2 611	325 379
Collie Race Club							24 382
Dongara - Irwin Race Club	1	6	50	30 042	5 007	2 200	24 382
East Pilbara Race Club (Newman)	2	11	61	56 689	5 154	785	48 765
Eastern Gascoyne Racing Club (Landor)	2	15	91	36 850	2 457	1 400	30 074
Esperance Bay Turf Club	10	60	467	265 438	4 424	5 666	325 379
Exmouth Race Club	1	6	48	31 490	5 248	516	24 382
Junction Race Club	1	6	22	30 820	5 137	445	24 382

Club	No of Race Meetings	No of Races Conducted	No of Starters	Total Stakes (Inc subsidies) \$	Average stakes per race \$	Total Attendances	Total RWWA Dist \$ (inc Rebates/exc Grants)
COUNTRY THOROUGHBREDS Cont.							
Kojonup Race Club	1	6	33	15 200	2 533	No Record	15 037
Kununurra Race Club	2	13	77	69 660	5 358	1 400	48 765
Laverton Racing Club	1	6	29	22 010	3 668	300	15 037
Leinster District Race Club	3	17	75	69 345	4 079	990	73 147
Leonora Racing Club	3	19	106	103 298	5 437	575	73 147
Marble Bar Amateur Turf Club	1	5	23	29 093	5 819	No Record	20 319
Meekatharra Race Club	2	10	47	40 605	4 061	No Record	48 765
Mingenew Turf Club	1	6	46	31 746	5 291	455	24 382
Mooro Race Club	1	6	46	24 710	4 118	No Record	24 382
Mount Magnet Race Club	2	12	82	50 364	4 197	201	48 765
Norseman Turf Club	1	6	24	30 186	5 031	350	24 382
Nor-West Jockey Club (Roebourne)	5	29	180	171 549	5 915	4 140	69 083
Pingrup Race Club	1	6	42	29 370	4 895	No Record	24 382
Port Hedland Turf Club	6	37	230	221 712	5 992	9 450	195 227
Walkaway Turf Club	2	12	135	67 519	5 627	824	0
West Kimberly Turf Club (Derby)	2	12	72	81 439	6 787	No Record	48 765
Wyndham Turf Club	2	12	62	61 545	5 129	1 000	48 765
Yalgoo Jockey Club	1	7	45	27 933	3 990	600	24 382
Total Country Thoroughbreds	74	447	3 003	2 443 530	5 467	55 528	1 954 797

Note: Metro Thoroughbreds stakes include trophies, Provincial and Country stakes exclude trophies

Metro Prime meetings include all weekend meetings (incl Northam Meeting Oct 18, 2003), Melbourne Cup, Perth Cup and Easter Monday meetings

2003/04 was a 53 week year

[^]Inc CASC – Controlling Authority Service Charges. Payments of \$8.0M comprised of CASC charges across all three codes for 2003/04. 2003/04 was a transition year where controlling authority functions were progressively transferred to Racing & Wagering Western Australia (RWWA)

Club	No of Race Meetings	No of Races Conducted	No of Starters	Total Stakes (Inc subsidies)	Average stakes per race	Total Attendances	Total RWWA Dist \$ (inc Rebates/exc Grants)
METRO HARNESS							
WA Trotting Assoc^ - Prime meetings	39	388	4 086	6 572 297	16 939	101 918	9 344 674
- Midweek meetings	35	298	2 997	1 615 556	5 421	43 012	2 297 042
Fremantle Trotting Club	12	120	1 266	1 551 695	12 931	24 751	1 676 200
Total Metro Harness	86	806	8 250	9 739 548	12 084	169 681	13 317 916
COUNTRY HARNESS							
Albany & Districts Trotting Club	10	70	636	277 174	3 960	3 530	299 291
Bridgetown Trotting Club	2	14	114	55 496	3 964	970	59 924
Bunbury Trotting Club	27	222	2 038	946 299	4 263	13 946	1 021 810
Busselton Trotting Club	6	44	396	157 299	3 575	10 700	169 851
Byford Trotting Training Complex	2	9	87	26 200	2 911	2 230	28 291
Central Wheatbelt Harness Racing Club	9	63	565	212 027	3 366	2 125	228946
Collie Trotting Club	4	27	252	99 584	3 688	3 280	107 530
Cunderdin Trotting Club	2	14	135	53 492	3 821	600	57 760
Geraldton Pacing Club	8	57	528	204 633	3 590	2 000	220 962
Golden Mile Trotting Club Inc	17	127	1 184	461 156	3 631	8 560	497 954
Harvey Trotting Club	14	112	1 123	486 082	4 340	7 175	524 869
Narrogin Trotting Club	11	79	754	318 082	4 026	4 000	343 464
Northam Trotting Club	25	199	1 966	839 758	4 220	10 274	906 767
Pinjarra Trotting Club	27	223	2 248	929 532	4 168	12 798	1 003 705
Wagin Trotting Club	12	84	765	317 506	3 780	6 568	342 842
Wanneroo Trotting Training Club	2	13	116	25 900	1 992	3 000	27 967
Williams Trotting Club	3	21	203	72 777	3 466	1 400	78 584
York Trotting Club	8	57	498	193 732	3 399	2 905	209 191
Total Country Harness	189	1 435	13 608	5 676 729	3 956	96 061	6 129 708

Note: Total stakes paid in harness include standing start bonuses, WESTBRED Bonus payments and Unplaced Starters Subsidies.

^Inc CASC – Controlling Authority Service Charges. Payments of \$8.0M comprised of CASC charges across all three codes for 2003/04. 2003/04 was a transition year where controlling authority functions were progressively transferred to Racing & Wagering Western Australia (RWWA)

Source (RWWA Distribution): WATA Annual Report 2003/04

Club	No of Race Meetings	No of Races Conducted	No of Starters	Total Stakes	Average stakes per race	Total Attendances	^Total RWWA Dist \$ (inc Rebates/exc Grants)
GREYHOUNDS							
Cannington Greyhounds	95	1 035	8 051	2 718 771	2 627	65 232	
Mandurah Greyhounds	143	1 560	12 296	2 007 680	1 287	50 613	
Northam Greyhounds	22	261	2 048	212 495	814	3 116	
Total Greyhounds	260	2 856	22 395	4 938 946	1 729	118 961	8 237 661

Note: Total stakes paid at Cannington include stake money paid for Provincial Class racing at that venue. (approximately 25% of total races)

The average stakes paid for City Class races at Cannington is, therefore, significantly higher.

^Inc CASC – Controlling Authority Service Charges. Payments of \$8.0M comprised of CASC charges across all three codes for 2003/04. 2003/04 was a transition year where controlling authority functions were progressively transferred to Racing & Wagering Western Australia (RWWA)

Sources: *RWWA Racing - Thoroughbreds*

RWWA Racing - Harness

RWWA Racing - Greyhounds

Racing Penalties Appeal Tribunal Information

Code	Carried over from 02/03	Appeals Lodged 03/04	Appeals Determined 03/04	Hearing days occupied
Thoroughbreds	2	7	8	6.00
Harness	2	6	7	3.50
Greyhounds	-	2	2	1.00
TOTAL	4	15	17	10.50

The results of appeals lodged during the year were:

Appeal	Thoroughbreds	Harness	Greyhounds
Allowed in full (conviction quashed)	1	1	0
Allowed in part (penalty reduced)	0	1	0
Appeals dismissed	5	5	2
Withdrawn	1	0	0
Referred Back to Stewards (RWVA)	1	0	0

Source: *Racing Penalties Appeals Tribunal Annual Report 2003/2004*

Financial

TAB/RWWA Financial Performance

Year	Turnover * \$ Million	% Inc. (Decrease)	Tax Rate %	Tax to Govt. \$ Million	Profit Distributed to Codes ** \$ Million	% To Govt.	% To Industry	
1970-71	56.2	12.2	5.8 (1)	3.6	2.4	60.0	40.0	(1) tax rate increased to 6% from 1.1.1971, invest. tax abolished from 1.1.1971
1971-72	68.3	21.5	6	4.1	2.7	60.3	39.7	
1972-73	78.3	14.6	6	4.7	3.3	58.8	41.2	
1973-74	99.0	26.5	6	5.9	4.4	57.3	42.7	
1974-75	122.8	23.9	6	7.4	5.4	57.8	42.2	
1975-76	146.2	19.1	6	8.8	6.6	57.1	42.9	
1976-77	159.0	8.8	6	9.5	8.1	54.0	46.0	
1977-78	178.1	12.0	6	10.7	10.3	51.0	49.0	
1978-79	191.9	7.8	6	11.5	11.9	49.1	50.9	
1979-80	202.9	5.7	6	12.2	12.8	50.8	49.2	
1980-81	234.9	15.8	6	14.1	14.7	49.0	51.0	
1981-82	263.3	12.1	6	15.8	19.2	45.1	54.9	
1982-83	274.9	4.4	6	16.5	18.8	46.7	53.3	
1983-84	293.8	6.9	6.74 (2)	19.8	19.6	50.2	49.8	(2) tax rate increased to 7% from 1.11.1983
1984-85	314.2	7.0	7	22.0	20.2	52.1	47.9	
1985-86	328.8	4.6	7	23.0	23.0	50.0	50.0	
1986-87	340.6	3.6	7	23.8	22.4	51.5	48.5	
1987-88	386.6	13.5	7	27.1	25.0	52.0	48.0	
1988-89	441.6	14.2	6 (3)	26.5	31.2	46.0	54.0	(3) tax rate reduced to 6% from 1.8.1988, 1.5% on-course total turnover levy abolished
1989-90	479.0	8.5	6	28.7	32.1	47.2	52.8	
1990-91	461.1	(-3.7)	6	27.7	29.2	48.7	51.3	
1991-92	459.7	(-0.3)	6	27.6	28.0 (4)	49.6	50.4 (4)	(4) includes tax rebate of \$550,000 and a capital grant of \$1 million.
1992-93	519.8	13.1	5.26 (5)	27.3 (5)	33.3 (5)	45.0 (5)	55.0 (5)	(5) 1% TAB tax rebated to racing clubs from 1.12.1992 to 28 June 1996. Figures shown are net of Rebates
1993-94	584.7	12.5	5 (5)	29.2 (5)	38.1 (5)	43.4 (5)	56.6 (5)	
1994-95	620.7	6.2	5 (5)	31.0 (5)	41.7 (5)	42.8 (5)	57.1 (5)	
1995-96	659.7	6.3	5 (5)	33.0 (5)	43.2 (5)	43.3 (5)	56.7 (5)	
1996-97	678.5	2.8	5	33.9	42.9 (6)*	44.1	55.9	(6) includes arrears of tax rebates totalling \$474,000
1997-98	735.4	8.4	5	36.8	42.9	46.2	53.8	
1998-99	782.1	6.3	5	39.1	49.0	44.4	55.6	
1999-00	817.2	4.5	5	40.8	50.3	44.8	55.1	
2000-01	854.2	4.5	4.72 (7)	40.3 (7)	54.0 (7)	42.7 (7)	57.5 (7)	(7) 0.5% TAB tote tax rebated effective Feb 01. Includes special distribution of \$1.5 million.
2001-02	904.3	5.9	4.5 (8)	40.7 (8)	58.1 (8)	41.2 (8)	58.8 (8)	(8) Includes 0.5% tax rebate.
2002-03	983.0	8.75	4.5 (9)	43.5 (9)	63.3 (9)	40.7 (9)	59.3 (9)	(9) Includes 0.5% tax rebate.
2003-04^	1 063.7	8.21	4.5	46.7	64.9	41.87	58.13	

Notes: *Total turnover relates to racing, sports, favourite numbers and fixed odds.

** Distribution relates to racing codes only and does not include sports distribution.

^Inc CASC – Controlling Authority Service Charges. Payments of \$8.0M comprised of CASC charges across all three codes for 2003/04. 2003/04 was a transition year where controlling authority functions were progressively transferred to Racing & Wagering Western Australia (RWWA)

Source: RWWA

TAB/RWWA Distribution to Racing Codes

YEAR		Thoroughbreds \$'000	Harness \$'000	Greyhounds \$'000
90/91	TAB Distribution	16 349	9 751	3 026
	TOTAL	16 349	9 751	3 026
	% Variation on 89/90	-7.2	-12.0	-10.7
91/92	TAB Distribution	15 825	8 625	2 988
	TAB Tax Rebates	275	275	
	TOTAL	16 100	8 900	2 988
	% Variation on 90/91	-1.5	-8.7	-1.2
92/93	TAB distribution	16 641	8 833	3 810
	TAB Tax Rebates	2 278	1 189	463
	TOTAL	18 919	10 022	4 273
	% Variation on 91/92	+17.5	+12.6	+43.0
93/94	TAB distribution	18 418	9 212	4 442
	TAB Tax Rebates	3 446	1 741	702
	TOTAL	21 864	10 953	5 144
	% Variation on 92/93	+15.6	+ 9.3	+20.4
94/95	TAB distribution	20 340	9 865	5 180
	TAB Tax Rebates	2 780	2 580	801
	TOTAL	23 120	12 445	5 981
	% Variation on 93/94	+5.7	+ 13.6	+16.3
95/96	TAB distribution	21 090	10 064	5 479
	TAB Tax Rebates	2 824	2 840	859
	TOTAL	23 914	12 904	6 338
	% Variation on 94/95	+3.4	+3.7	+6.0
96/97	TAB distribution	23 462	12 633	6 339
	TAB Tax Rebates	266	143	65
	TOTAL	23 728	12 776	6 404
	% Variation on 95/96	-0.8	-1.0	+1.0
97/98	TAB distribution	23 277	12 533	7 114
	TOTAL	23 277	12 533	7 114
	% Variation on 96/97	-1.9	-1.9	+11.1
98/99	TAB distribution	27 227	14 661	7 096
	TOTAL	27 227	14 661	7 096
	% Variation on 97/98	+16.97	+16.98	-0.25
99/00	TAB distribution	27 777	14 957	7 528
	TOTAL	27 777	14 957	7 528
	% Variation on 98/99	+2.02	+2.02	+6.09
00/01	TAB distribution	30 002	16 016	8 032
	TOTAL	30 002	16 016	8 032
	% Variation on 99/00	+8.01	+7.08	+6.70
01/02	TAB distribution	32 093	17 284	8 700
	TOTAL	32 093	17 284	8 700
	% Variation on 00/01	+6.96	+7.91	+8.31
02/03	TAB distribution	34 991	18 844	9 485
	TOTAL	34 991	18 844	9 485
	% Variation on 01/02	+9.03	+9.03	+9.02
03/04 [^]	TAB Distribution	35 848	19 306	9 718
	TOTAL	35 848	19 306	9 718
	% Variation on 02/03	2.45%	2.45%	2.46%

[^]Inc CASC – Controlling Authority Service Charges. Payments of \$8.0M comprised of CASC charges across all three codes for 2003/04. 2003/04 was a transition year where controlling authority functions were progressively transferred to Racing & Wagering Western Australia (RWWA)

Source: RWWA

Intracode TAB/RWWA Distribution

		03/04^ \$'000	02/03 \$'000	01/02 \$'000
THOROUGHBREDS	- Metro	25 778	25 161	23 078
	- Provincial	7 919	7 691	7 063
	- Country	2 151	2 089	1 918
HARNESS	- Metro	13 176	13 450	11 796
	- Country TAB	6 130	5 223	5 603
GREYHOUNDS	- Total	9 718	9 438	8 734*

Note: 1. Differences in total TAB distribution shown in this table compared to the "TAB Distribution to Racing Codes" table are caused by the timing of payments made by the TAB to the codes (last day of each month) and the delay in TAB payments filtering through to country clubs.

2. ^Inc CASC – Controlling Authority Service Charges. Payments of \$8.0M comprised of CASC charges across all three codes for 2003/04. 2003/04 was a transition year where controlling authority functions were progressively transferred to Racing & Wagering Western Australia (RWWA)

3. *Includes \$732,171 of Discretionary Payments and TAB Tax Rebates.

Source: RWWA

Ratio of Stakes Allocation to TAB/RWWA Distribution

		03/04^ %	02/03 %	01/02 %
THOROUGHBREDS	- Metro	82.29	77.0	85.0
	- Provincial	99.82	92.2	98.6
	- Country	113.61	105.4	122.9
HARNESS	- Metro	73.92	59.0	63.4
	- Country TAB	92.61	101.2	97.4
GREYHOUNDS	- Total	50.82	47.98	46.5

Notes: 1. In calculating these ratios items such as TAB tax rebates, contributions to stakes reserves, starters subsidies and country stakes assistance have been taken into account. However, there are many other issues, such as the provision of non-financial services to country clubs etc, which are relevant and should be considered when making comparisons.

2. ^Inc CASC – Controlling Authority Service Charges. Payments of \$8.0M comprised of CASC charges across all three codes for 2003/04. 2003/04 was a transition year where controlling authority functions were progressively transferred to Racing & Wagering Western Australia (RWWA). Stakes data provided by the Racing Managers at each respective code

Source: RWWA

Unclaimed TAB/RWWA Dividends

	2003/04 \$'000	2002/03 \$'000	2001/02 \$'000
THOROUGHBREDS	1 878	1 677	1 634
HARNESS	870	903	880
GREYHOUNDS	1 048	955	847
SPORTS BETTING	87	56	33
TOTAL	3 883	3 591	3 394

Note: Unclaimed TAB dividends from betting on horse racing events are paid to the Racecourse Development Trust for allocation to thoroughbreds and trotting clubs for development purposes.

The amounts shown for thoroughbreds and harness are net after allowing for Racecourse Development Trust administration costs.

Unclaimed dividends from betting on greyhound racing events are paid directly to the WA Greyhound Racing Authority.

Summary of Development Grants

RECIPIENT	TOTAL 1976 - 2003 \$	03/04 \$
THOROUGHBREDS		
WA Turf Club	10 322 337	229 953
Albany Racing Club	917 278	31 670
Ashburton Race Club	13 274	
Beverley Race Club	211 799	6 000
Broome Turf Club	190 772	900
Bunbury Turf Club	1 621 463	990
Carnarvon Race Club	168 431	17 224
Collie Race Club	27 865	9 000
Coolgardie Racing Club	7 477	
Dongara-Irwin Race Club	29 703	18 105
East Pilbara Race Club	4 000	
Eastern Gascoyne Racing Club	1 011	
Esperance Bay Turf Club	253 460	
Exmouth Race Club	20 354	
Geraldton Turf Club	1 154 447	50 940
Junction Race Club	1 310	
Kalgoortie-Boulder Racing Club	1 657 395	137 875
Katanning Race Club	27 206	
Kimberley Goldfields Amateur Jockey Club	2 955	
Kojonup Polo & Polocrosse Club	2 805	
Kununurra Race Club	30 038	13 290
Laverton Racing Club	2 309	
Leinster Racing Club	7 744	
Leonora Racing Club	37 202	3 152
Marble Bar Amateur Race Club	5 352	7 120
Meekatharra Race Club	3 749	7 120
Mingenew Turf Club	27 373	
Moora Race Club	15 772	
Mount Barker Turf Club	344 785	7 426
Mount Magnet Race Club	39 815	2 425
Murchison Racing Club	3 230	
Narrogin Race Club	258 943	

RECIPIENT	TOTAL 1976 - 2003 \$	03/04 \$
Newman Turf Club	83 941	7 917
Nor-West Jockey Club	39 631	
Norseman Turf Club	18 551	
Northam Race Club	1 518 908	47 987
Northampton Race Club	228	
Nyabing Race Club	2 500	
Pingrup Race Club	7 580	
Pinjarra Race Club	1 716 612	150 201
Port Hedland Turf Club	95 381	900
Southern Districts Thoroughbred Association	86 832	
Tom Price Turf Club	1 000	
Toodyay Race Club	287 155	
Walkaway Turf Club	2 744	
West Kimberley Turf Club	27 650	
Wiluna Picnic Race Club	3 801	
Winning Picnic Race Club	250	
Wittenoom Gorge Race Club	2 803	
Wyndham Turf Club	6 494	7 380
Yalgoo Jockey Club	4 022	
York-Beverley Turf Club	463 524	
TOTAL THOROUGHBREDS	21 787 261	757 575

RECIPIENT	TOTAL 1976/03 \$	03/04 \$
HARNESS		
WA Trotting Association	3 953 839	368 314
Albany & Districts Trotting Club	502 612	11 930
Bridgetown Trotting Club	107 001	1 636
Bunbury Trotting Club	2 165 131	1 104
Busselton Trotting Club	218 619	15 405
Byford Trotting Training Complex	100 108	
Central Wheatbelt Harness Racing Club	472 236	
Collie Trotting Club	255 823	
Cunderdin Trotting Club	187 778	
Fremantle Trotting Club	3 250	
Geraldton Pacing Club	160 661	
Golden Mile Trotting Club	605 146	31 284
Harvey District Trotting Club	513 662	24 947
Jandakot Trotting Training Centre	14 000	
Kambalda Trotting Club	7 091	
Katanning Trotting Club	34 443	
Kellerberrin Trotting Club	57 414	5 025
Merredin Trotting Club	41 669	
Narrogin Trotting Club	593 438	
Northam Trotting Club	820 924	
Pinjarra Trotting Club	800 589	7 095
South Southern Trotting Training Centre	15 600	
Trayning & Districts Trotting Club	12 089	
Wagin Trotting Club	341 531	15 757
Wanneroo Trotting Club		18 700
Wanneroo Trotting Training Club	152 977	30 150
Williams Trotting Club	59 382	
Wyalkatchem Trotting Club	13 808	
York Trotting Club	265 546	9 772
TOTAL HARNESS	12 483 238	541 119

Computerised Country Totes	62 138	
Country TAB Racing Clubs	45 725	
TOTAL GRANTS	34 371 481	NIL

Summary of Training Track Grants

RECIPIENT	TOTAL 1976/03 \$	03/04 \$
THOROUGHBREDS		
Geraldton Turf Club		2 000
Guildford Racing		3 770
Lark Hill		60 000
TOTAL THOROUGHBREDS		65 770

RECIPIENT	Total 1976/03 \$	03/04 \$
HARNESS		
Bunbury Trotting Club		14 000
Byford Trotting Club		32 013
Cunderdin Trotting Club		500
Dunbarton Training Track		1 000
Golden Mile Trotting Track		4 000
Harvey District Trotting Club		2 000
Jandakot Trotting Training Centre		12 000
Pinjarra Trotting Club		4 000
South Southern Trotting Training Centre		4 000
Wanneroo Trotting Club		12 102
TOTAL HARNESS		85 615

Source: RWWA

On-Course Betting Information

Bookmakers Turnover and Levy Paid

CODE: THOROUGHBREDS	Metropolitan Gross Turnover \$'000	Country Gross Turnover \$'000	Total Gross Turnover \$'000	Levy paid \$'000
01/02	86 133	16 201	102 333	2 047
02/03	81 429	16 104	97 533	1 950
03/04	84 968	16 581	101 549	2 031

CODE: HARNESS	Metropolitan Gross Turnover \$'000	Country Gross Turnover \$'000	Total Gross Turnover \$'000	Levy paid \$'000
01/02	9 114	1 801	10 914	167
02/03	11 484	1 147	12 631	213
03/04	12 399	1 139	13 538	220

CODE: GREYHOUNDS	Metropolitan Gross Turnover \$'000	Provincial/Country Gross Turnover \$'000	Total Gross Turnover \$'000	Levy paid \$'000
01/02	5 028	614	5 641	42
02/03	4 307	1	4 308	24
03/04	4 854	0	4 854	24

ALL CODES	Gross Turnover \$'000	Levy paid \$'000
01/02	118 888	2 256
02/03	114 472	2 187
03/04	119 941	2 275

Notes: 1. Turnover figures include sports betting turnover.

2. Levy paid by race bookmakers (2.0%) is retained by the host racing club. Levy paid by sports bookmakers (0.5%) is shared equally by the last racing club and the Gaming and Wagering Commission. Sports betting levy collected by the Gaming and Wagering Commission is paid to sporting organisations as directed by the Minister for Sport and Recreation.

Source: Department of Racing Gaming and Liquor

Sportsbetting Turnover

Code	Total received on-course \$'000		Total received by telephone \$'000		Total received by internet \$'000		Total sports Betting turnover \$'000	
	03/04	02/03	03/04	02/03	03/04	02/03	03/04	02/03
Thoroughbreds	7	0*	0	0*	0	n/a	7	0*
Harness	0	428*	2 242	2 234*	0	n/a	2 242	2 662*
Greyhounds	47	0*	4 807	4 127*	1 110	n/a	5 964	4 127*
TOTAL	54	428*	7 049	6 361*	1 110	n/a	8 213	6 789*

Note: *Telephone sports betting includes Internet betting for 2002/2003

Telephone Betting Turnover

Venue	Racing \$'000		Sports \$'000		Total \$'000	
	03/04	02/03	03/04	02/03	03/04	02/03
Metro Thoroughbreds	16 881	20 259	0	0	16 881	20 259
Country Thoroughbreds	3 170	4 076	7	0	3 177	4 076
Total Thoroughbreds	20 051	24 335	7	0	20 058	24 335
Metro Harness	1 167	3 103	2 242	2 234	3 409	5 337
Country Harness	193	275	0	0	193	275
Total Harness	1 360	3 378	2 242	2 234	3 602	5 612
Metro Greyhounds	0	98	4 807	4 127	4 807	4 225
Country Greyhounds	0	1	0	0	0	1
Total Greyhounds	0	99	4 807	4 127	4 807	4 226
TOTAL	21 411	27 812	7 056	6 361	28 467	34 173

Note: 2002/2003 data includes Internet betting

Internet Betting Turnover

Venue	Racing \$'000		Sports \$'000		Total \$'000	
	03/04	02/03	03/04	02/03	03/04	02/03
Metro Thoroughbreds	1 228	*20 259	0	0	1228	*20 259
Country Thoroughbreds	134	*4 076	0	0	134	*4 076
Total Thoroughbreds	1 362	*24 335	0	0	1 362	24 335
Metro Harness	143	*3 103	0	*2 234	143	*5 337
Country Harness	44	*275	0	0	44	*275
Total Harness	187	*3 378	0	*2 234	187	*5 612
Metro Greyhounds	0	*98	1 110	*4 127	1 110	*4 225
Country Greyhounds	0	*1	0	0	0	*1
Total Greyhounds	0	*99	1 110	*4 127	1 110	*4 226
TOTAL	1 549	*27 812	1 110	*6 361	2 659	*34 173

Note: 2002/2003 data includes Telephone betting

Source Dept of Racing Gaming & Liquor

On-Course Totalisator Turnover

CODE: THOROUGHBREDS	Metropolitan	Country	TOTAL
	Gross Turnover \$'000	Gross Turnover \$'000	Gross Turnover \$'000
01/02	34 889	12 865	47 754
02/03	36 340	11 847	48 187
03/04	31 708	12 463	44 172

CODE: HARNESS	Metropolitan	Country	TOTAL
	Gross Turnover \$'000	Gross Turnover \$'000	Gross Turnover \$'000
01/02	10 194	3 820	14 014
02/03	10 344	2 842	13 186
03/04	12 368	4 037	16 405

CODE: GREYHOUNDS	Metropolitan	Provincial/Country	TOTAL
	Gross Turnover \$'000	Gross Turnover \$'000	Gross Turnover \$'000
01/02	3 636	1 732	5 368
02/03	3 398	1 796	5 194
03/04	3 877	2 252	6 130

TOTAL ALL CODES	Total Gross Turnover \$'000
01/02	67 136
02/03	66 567
03/04	66 707

Note: There is currently no tax or duty collected from on-course totalisator betting.

Source: Department of Racing Gaming and Liquor

Number of Licensed Bookmakers

Issued/Terminated

Number as at 31 July 02	Number as at 31 July 03	Issued during 03/04	Terminated during 03/04	Number as at 31 July 04
50	49	2	4	47

License Category

CATEGORY	03/04	02/03	01/02
Grandstand Enclosure	22	21	20
Leger/ Country Racecourse	25	28	30
Total	47	49	50

Number of Bookmaker Employee Licenses

	03/04	02/03	01/02
Issued	28	35	25
Renewed	6	17	84
Expired	29	42	57

Number of Bookmaker Manager Licenses*

	03/04	02/03	01/02
Issued	2	3	0
Renewed	0	0	0
Expired	0	0	0

Note: *Amendments in September 2002 to the *Betting Control Act 1954*, enabled provision for Bookmaker Manager Licences to be issued under section 11D of the Act.

Source: *Department of Racing Gaming and Liquor*

Off-Course Betting Information

TAB Turnover by Racing Code

CODE:	2003/04		2002/03		2001/02	
	\$'000	%	\$'000	%	\$'000	%
Thoroughbreds	568,634	53.48	538,323	54.74	508 666	56.25
Harness	215,700	20.29	203,390	20.68	184 123	20.36
Greyhounds	235,222	22.12	210,234	21.38	184 773	20.43
Other	43,755	4.12	31,513	3.20	26 785	2.96
TOTAL TURNOVER	1,063,311	100.00	983,460	100.00	904 347	100.00

Note: 'Other' includes, Tote Sport, Favourite Numbers and Fixed Odds Decided Turnover

Source: RWWA

TAB Turnover on WA Racing 03/04 Club by Club

CODE: THOROUGHBREDS	TAB \$ Turnover	No. Meetings	03/04 \$ Average per meeting	02/03 \$ Average per meeting
Metro - Ascot	\$38,908,635	28	\$1,389,594	\$1,348,945
Metro - Belmont	\$69,977,885	61	\$1,147,178	\$965,479
Albany	\$2,260,732	12	\$188,394	\$178,680
Broome	\$559,785	4	\$139,946	
Bunbury	\$10,166,046	20	\$508,302	\$434,939
Carnarvon	\$201,428	2	\$100,714	\$82,435
Esperance	\$535,651	5	\$107,130	\$80,875
Geraldton	\$2,815,503	15	\$187,700	\$150,983
Kalgoorlie	\$7,129,009	24	\$297,042	\$261,004
Mount Barker	\$2,165,243	7	\$309,320	\$236,573
Narrogin	\$1,428,683	5	\$285,737	\$159,966
Northam	\$11,671,537	23	\$507,458	\$438,860
Pinjarra	\$9,850,298	18	\$547,239	\$484,322
Port Hedland	\$113,938	1	\$113,938	\$91,536
Toodyay	\$228,214	1	\$228,214	
York	\$643,702	3	\$214,567	\$208,543
Total	\$158,656,289	229	\$692,822	\$659,485

Source: RWWA

CODE: HARNESS	TAB \$ Turnover	No. Meetings	03/04 \$ Average per meeting	02/03 \$ Average per meeting
Metro - Gloucester Pk	\$37,758,915	85	\$444,223	\$394,477
Albany	\$645,380	10	\$64,538	\$57,087
Bridgetown	\$96,530	2	\$48,265	\$46,784
Bunbury	\$3,813,374	26	\$146,668	\$109,017
Busselton	\$430,637	6	\$71,773	\$59,352
Byford	\$55,130	2	\$27,565	\$46,846
Collie	\$217,204	4	\$54,301	\$49,476
Cunderdin	\$92,332	2	\$46,166	\$39,463
Geraldton	\$551,485	8	\$68,936	\$52,103
Harvey	\$1,748,235	14	\$124,874	\$109,212
Kalgoorlie	\$1,079,018	17	\$63,472	\$66,043
Kellerberrin	\$511,791	9	\$56,866	\$49,614
Narrogin	\$940,844	11	\$85,531	\$68,425
Northam	\$3,598,846	25	\$143,954	\$101,411
Pinjarra	\$4,778,256	27	\$176,972	\$163,071
Wagin	\$764,098	12	\$63,675	\$57,031
Wanneroo	\$92,885	2	\$46,443	\$42,335
Williams	\$145,867	3	\$48,622	\$44,295
York	\$522,370	8	\$65,296	\$57,391
Total	\$57,843,197	273	\$211,880	\$193,592

CODE: GREYHOUNDS	TAB \$ Turnover	No. Meetings	03/04 \$ Average per meeting	02/03 \$ Average per meeting
Cannington	\$15,454,618	94	\$164,411	\$155,495
Mandurah	\$21,879,204	142	\$154,079	\$147,360
Northam	\$2,095,712	22	\$95,260	\$77,796
Total	\$39,429,534	258	\$152,828	\$143,280

Source: RWWA

TAB Meetings Covered by Code and Location

CODE:	03/04		02/03		01/02	
THOROUGHBREDS	No	%	No	%	No	%
WA Metropolitan	89	1.51	89	1.56	90	1.58
WA Country	138	2.33	132	2.32	142	2.49
NSW	535	9.05	515	9.04	553	9.70
VIC	496	8.39	507	8.90	506	8.87
QLD	394	6.67	387	6.80	400	7.02
SA	169	2.86	174	3.06	168	2.95
Other	82	1.39	78	1.37	81	1.42
Part Meetings	53	0.90	35	0.61	23	0.40
TOTAL	1,956	33.09	1 917	33.66	1 963	34.43

CODE:	03/04		02/03		01/02	
HARNESS	No	%	No	%	No	%
WA Metropolitan	85	1.44	95	1.67	80	1.40
WA Country	187	3.16	180	3.16	181	3.17
NSW	405	6.85	395	6.94	390	6.84
VIC	491	8.31	485	8.52	469	8.23
QLD	249	4.21	255	4.48	254	4.45
SA	155	2.62	157	2.76	169	2.96
Other	52	0.88	58	1.02	49	0.86
Part Meetings	14	0.24	10	0.18	4	0.07
TOTAL	1,638	27.71	1 635	28.71	1 596	27.99

CODE:	03/04		02/03		01/02	
GREYHOUNDS	No	%	No	%	No	%
WA Metropolitan	94	1.59	103	1.77	105	1.84
WA Country	164	2.77	152	2.62	139	2.44
NSW	670	11.33	643	11.07	601	10.54
VIC	689	11.66	686	11.81	680	11.93
QLD	359	6.07	360	6.20	360	6.31
SA	158	2.67	145	2.50	104	1.82
Other	157	2.66	158	2.72	153	2.68
Part Meetings	26	0.44	11	0.19	1	0.02
TOTAL	2,317	39.20	2,258	38.86	2 143	37.58

TOTAL Meetings Covered	5,911	100.00	5,810	100.00	5,702	100.00
-------------------------------	--------------	---------------	--------------	---------------	--------------	---------------

Source: RWWA

Number and Type of TAB Agencies

METROPOLITAN	03/04		02/03	
	No.	%	No.	%
Conventional	44	15.71	48	17.71
Hotel	92	32.86	89	32.84
Pub/Club TAB	6	2.14	5	1.85
Account Betting	1	0.36	1	0.37
Shopping Centre	16	5.71	16	5.90
Sub Agency	1	0.36	1	0.37
TOTAL	160	57.14	160	59.04

COUNTRY	03/04		02/03	
	No	%	No	%
Conventional	10	3.57	16	5.90
Hotel	100	35.71	86	31.73
Pub/Club TAB	9	3.21	8	2.95
Account Betting	0	0.00	0	0
Shopping Centre	1	0.36	1	0.37
Sub-agency	0	0.00	0	0
TOTAL	120	42.86	111	40.96

All	2003/2004		2002/2003	
	No	%	No	%
Conventional	54	19.29	64	23.62
Hotel	192	68.57	175	64.58
Pub/Club TAB	15	5.36	13	4.80
Account Betting	1	0.36	1	0.37
Shopping Centre	17	6.07	17	6.27
Sub Agency	1	0.36	1	0.37
TOTAL	280	100.00	271	100.00

Source: RWWA