

HWA

HARNESS WA

JAN/FEB 2020

POWERED BY



**RACING AND WAGERING
WESTERN AUSTRALIA**

WHEN THE BOAT CAME IN

*The Jubilee Carnival
of 1950/1951*

THE MISSING PORTER MEMORIAL WINNER

HOME BRED TAKES OUT \$125,000 WESTRAL MARES CLASSIC

**FRIDAY
13TH IS
LUCKY
FOR SOME**

**ONE
PERSON'S
TRASH IS
ANOTHER
PERSON'S
TREASURE**

FOR ALL YOUR WESTERN AUSTRALIAN HARNESS RACING INFORMATION

REINSWOMEN ACROSS AUSTRALIA AND NEW ZEALAND ARE WEARING TEAL PANTS



Team Teal reinswomen will race to raise awareness and much needed funds for **ovarian cancer research**.

1ST FEBRUARY TO 15TH MARCH 2020

WOMENcan
FUNDING CANCER RESEARCH
**team
teal**

HWA

HARNESS WA



Harness WA is a publication of Racing and Wagering WA (RWWA)

PUBLICATION DESIGNER: Michele Florent
CONTRIBUTING WRITER: Alan Parker & Tim Blee
CONTRIBUTING PHOTOGRAPHERS: Scott Hamilton Media
Photography by Jodie Hallows

ALL ENQUIRIES: Kelly Sarich
EMAIL: publications@rwwa.com.au

PHONE: (08) 9445 5504
ADDRESS: 14 Hasler Road
Osborne Park WA 6017

ONLINE: rwwa.com.au
FACEBOOK: /racingandwageringwa
TWITTER: @OfficialRWWA
@RWWA_Harness

HARNESS RACING DEPARTMENT

HEAD OFFICE ADDRESS: 14 Hasler Road
Osborne Park WA 6017
EMAIL: harnessinfo@rwwa.com.au
OFFICE HOURS: 7.30am to 4.00pm
Monday to Friday
DRIVING MASTER: Trevor Warwick
MOBILE: 0434 609 604
TRAINERS' CENTRE PH: (08) 9445 5267*
FAX: (08) 9445 3056
24HR NOM SERVICE PH: (08) 9445 5268*

* N.B. all incoming and outgoing calls are recorded

STEWARDS DEPARTMENT

GENERAL MANAGER INTEGRITY: Denis Borovica
PHONE: (08) 9445 5427
CHIEF STEWARD: Barbara Scott
PHONE: (08) 9445 5176
FAX: (08) 9477 5215
EMAIL: barbara.scott@rwwa.com.au
DEPUTY CHIEF STEWARD: Rhys Chappell
PHONE: (08) 9445 5177
FAX: (08) 9477 5215
EMAIL: rhys.chappell@rwwa.com.au
SENIOR INVESTIGATOR: Geoff Johnson
MOBILE: 0408 843 560

RWWA INTEGRITY

RECORDED MESSAGE SERVICE: (08) 9445 5565
EMAIL: racingintegrity@rwwa.com.au

LICENSING & REGISTRATIONS

ADDRESS: 14 Hasler Road
Osborne Park WA 6017
EMAIL: licreginfo@rwwa.com.au
PHONE: (08) 9445 5568
FAX: (08) 6314 4792

RACING AND WAGERING WA

HEAD OFFICE ADDRESS: 14 Hasler Road
Osborne Park WA 6017
PHONE: (08) 9445 5333
FAX: (08) 9244 5914
EMAIL: info@rwwa.com.au
WEB: www.rwwa.com.au

STAKES

EMAIL: rachel.anderson@rwwa.com.au

CONTENTS



COVER IMAGE: Gotta Go Gabbana, winner of the Westral Mares Classic

| | |
|---|----|
| HOME BRED TAKES OUT \$125,000 WESTRAL MARES CLASSIC | 2 |
| WHEN THE BOAT CAME IN | 4 |
| ONE PERSON'S TRASH IS ANOTHER PERSON'S TREASURE | 10 |
| THE MISSING PORTER MEMORIAL WINNER | 12 |
| THE NAME SAYS IT ALL | 14 |
| FRIDAY 13TH IS LUCKY FOR SOME | 16 |
| NORTH EASTERN DISTRICTS LEGEND ON CUSP OF MAJOR MILESTONE | 18 |
| COMMUNITY TAB | 22 |
| 2020 FEATURE RACES | 24 |
| RACING POLICIES & GENERAL RACING INFORMATION | 35 |

HOMEBRED TAKES OUT \$125,000 WESTRAL MARES CLASSIC

by Alan Parker

A Western Australian bred taking out a Group One race against older horses is practically unheard of as these races are inevitably the domain of horses featuring an NZ tag at the end of their name.

The 2019 edition of the Group One Westral Mares Classic not only had a Westbred mare in the Annie Belton trainer Gotta Go Gabbana sent out as favourite she dominated the race from barrier one and gave her driver Chris Voak his second Group One win in eight days.

Voak is having a career best season and currently sits in second place on the State Drivers Premiership with 45 winners. While he is six wins behind Ryan Warwick his two Group One wins have him a \$140,000 clear of Gary Hall Jnr on the money-won list with earnings of \$587,182.

In downing the New Zealand bred trio of Our Alfie Romeo, Arma Indie and Pick My Pocket, Gotta Go Gabbana took her career record to 13 wins and 19 placings in 49 starts and her earnings now stand at some \$228,614.

Now a 6yo, Gotta Go Gabbana was bred by Colin and Annie Belton from their Kinney Hanover mare Lady Gabbana which managed just two wins, in moderate company in 64 starts. She collected \$25,000 of her career earnings of \$58,461 from a second placing in the 2yo State Sires Series final in 2008.

"She was better than her record shows," Annie Belton said recently.

"I was still learning about the subtleties of training young horses and I probably asked Lady Gabbana to do a bit much as a 2yo."

Lady Gabbana lost her first foal in the birthing process and her second foal, born in 2012, was Gotta Go Gabbana.

"We only breed our mares every second year and Lady Gabbana's 2014 Mach Three colt got hurt early and we lost him. She has just had a Hes Watching colt." Annie added.

That Gotta Go Gabbana is such a good mare is hardly surprising as the best winner produced by each of her first four dams is female.

In addition to the predominance of good female winners on her maternal side Gotta Go Gabbana's sire Gotta Go Collect has a similar record as a sire.

Seven of the top ten earners by Gotta Go Collect are females and Gotta Go Gabbana now ranks second only to another mare in Al Raza (1:52.2 \$459,247) as the richest winner sired by the former star juvenile whose career was cut short by injury.

Last season Annie and Colin enjoyed a great run with Lady De La Renta which won seven races at Gloucester Park in eight months before being sold to race in North America where she has taken a record of 1:49.4.



Diplomacy took over when Annie was asked to compare the two mares.

"They are totally different types of horses."

"Gabbana is tough while Lady De La Renta possessed higher point to point speed and it wouldn't be fair to try and compare them," she said.

Annie and Colin are coming under pressure from the Americans to sell Gotta Go Gabbana with some very lucrative offers being put forward.

"I still haven't really got over Lady De La Renta leaving and the feeling of breeding and training a Group One winner hasn't really sunk in yet either," she added.

"We feel that she has earned a chance to race the open class horses in the Fremantle Cup and WA Pacing Cup in January and as she is so tough we think she will be very competitive in that company."

Annie pointed out that the mare Maczaffair finished third in the 2019 WA Pacing Cup after a luckless sixth in the Fremantle Cup the week before.

Some idea of the difficulty for Westbred horses to compete on the Group One stage outside of age races is the fact that Gotta Go Gabbana is only the fourth Westbred, and first mare, to win an open-age Group One race in Perth in the past 20 years.

Millionaire gelding David Hercules took out the 2015 Fremantle Cup and another millionaire gelding in Has The Answers won the 2010 Australian Pacing Championship. A third gelding in Lookslightrning won the 2006 Australian Pacing Championship.

Although Gotta Go Gabbana's immediate maternal family originated in Victoria its first influence in Western Australia came just a year after Gloucester Park opened when Bill Gibaud brought his 11yo mare Little Edna to Perth for the 1930 WA Pacing Cup.

Little Edna won a heat of that year's Cup before finishing second to the New Zealand bred gelding Tommy Dillon in the final later the same night.

Little Edna is the ninth dam of Gotta Go Gabbana.



 **SHOW GAMBLING WHO'S BOSS**

WHEN YOU'RE READY TO TAKE CHARGE,
WE'RE READY TO LISTEN

TO FIND OUT MORE VISIT GAMBLEAWARE.COM.AU
OR CALL THE PROBLEM GAMBLING HELPLINE ON 1800 858 858

HELP IS FREE  24/7 CONFIDENTIAL

GAMBLING HELPLINE
1800 858 858
gambleaware.com.au

WHEN THE BOAT CAME IN

The Jubilee Carnival of 1950/1951

By Tim Blee

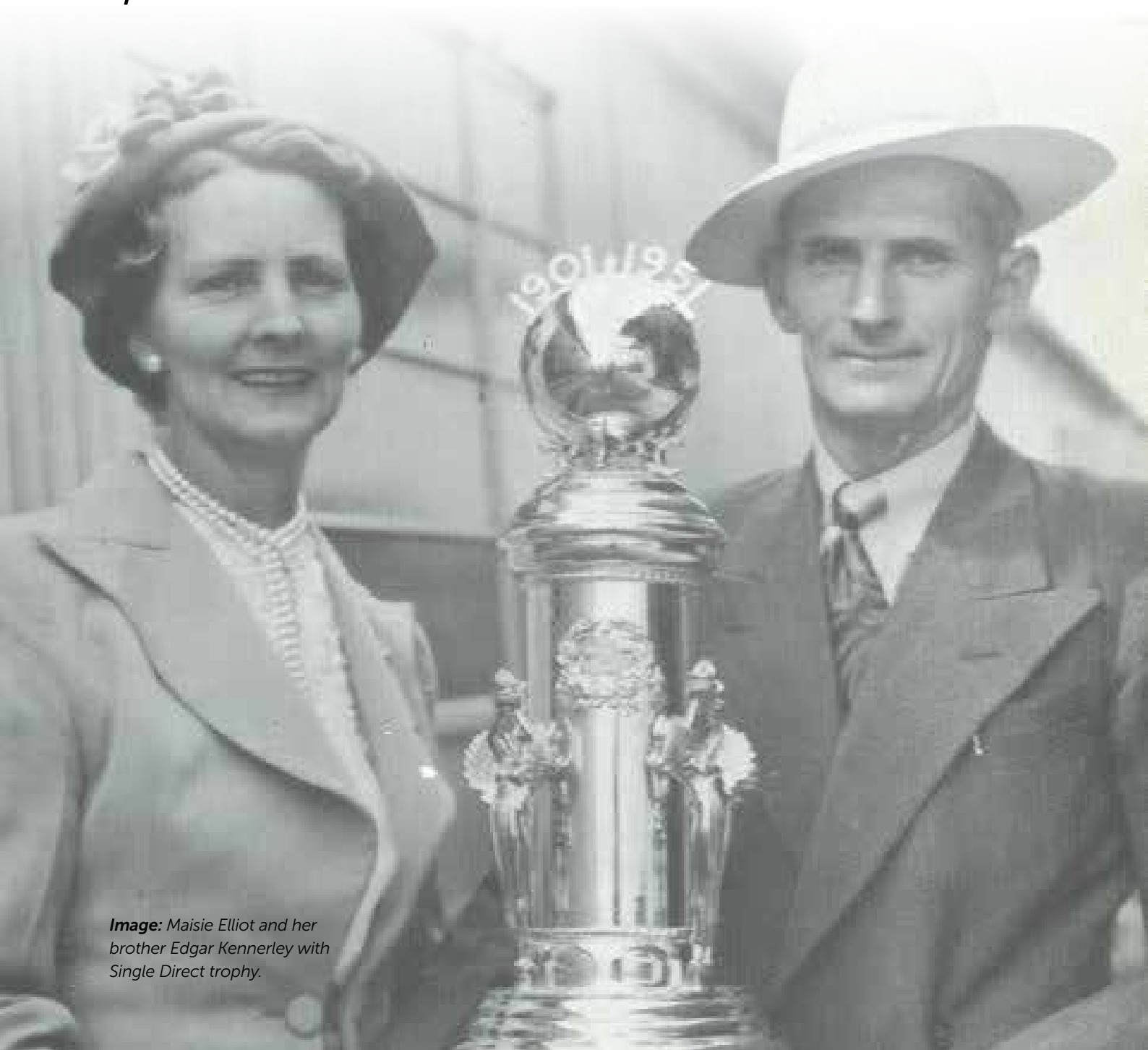


Image: Maisie Elliot and her brother Edgar Kennerley with Single Direct trophy.

Ask any trotting aficionado to name the Golden Era of Harness Racing in Western Australia and they will in all likelihood defer to the 20 year period from the mid 1960's through to the mid 1980's. And they would do so with total justification.

After all, this well chronicled era of champions that became household names and the massive crowds that flocked to Gloucester Park and Richmond Raceway, captured the imagination of followers Australia wide.

How can you argue against the likes of the mighty Binshaw and his 1967 Inter Dominion conquest, the shadow of the enduring grey Blue Pennant, the phenomenon that was Mount Eden?

The sweetheart of the masses, Daintys Daughter, the rise and rise of Australia's toughest ever horse in Pure Steel and his audacious challenger from south of the river Satinover, perhaps a forerunner to the great Eagles Dockers rivalry that so dominates current sporting loyalties.

The little black Flash Royal Force, the romantic saga of Village Kid who broke every conceivable record as he waged an equine war with yet another great champion in Preux Chevalier.

Heady and memorable days indeed.

However back in 1950, as Australia approached the Golden Jubilee Anniversary of Federation, the Western Australian Trotting Association put together an extended summer carnival that paid due recognition to the 50 year celebration of national unity that dominated the psyche of the young nation.

This summer carnival would be like few others with an innovative and precocious approach from the WATA Committee resulting in Gloucester Park playing host to the best horse in the dominion, the incomparable Single Direct, a striking jet black horse with a pronounced "Roman Nose".

Along with other interstate visitors, he would compete for the richest Cup stake ever offered in Australia, the £5000 WA "Trotting Cup" (as it was known in those days).

In addition, there would be a 12 heat Anniversary of Federation Handicap, with only the heat winners progressing to the £2,250 final.

All this at a time when three families were dominating the local scene with both the extended Kersley family, the astute Porter Stable and the Hamilton Hill juggernaut of W.F. (Pop) Johnson having a major say in nearly every feature race being contested at the time.

There was an abundance of fast class horses racing week in week out with the two mile Golden Jubilee Trotting Cup being for pacers assessed at 2.11 or better (M11+), resulting in the Cup field being over-subscribed with 23 nominations.

To put the stake-money in a modern context, £5000 would approximate to a stake of \$460,000 in today's dollars and the standard £750 pound Free For All, contested on a regular basis at headquarters each week, equates to over \$37,000.

The £2250 pound stake for the Federation Handicap final, for restricted class horses handicapped 2.17 or better (M5+ in today's handicapping terms), corresponds to a purse in excess of \$200,000 in today's dollars based on yearly movements in the average weekly wage.

The success of the carnival would be franked by the agreement of the great New Zealand champion and 1949 Inter Dominion titleholder Single Direct's owner, Bruce Elliott, and his trainer reinsman brother-in-law Edgar Kennerley, undertaking the arduous journey to Perth.

Single Direct was joined on the trip west by the highly credentialed Victorian star Amorous, both of whom would be handicapped off 36 yards in the Jubilee Cup.

Single Direct's record afforded him champion status with 54 wins and 38 places and stake earnings of £28,500, second only to the great Highland Fling at £32,000 as the highest stake earner in the Southern Hemisphere.

He won two heats and the final of the 1949 Inter Dominion Championship at Wayville from a 36 yard handicap on the notoriously small track at his first attempt at racing under lights.

In addition to this, Single Direct had won the 1947 Auckland Cup, the 1948 and 1949 New Zealand Championship and the 1949 New Zealand Free For All. He also boasted a record time trial of 2.01.0 recorded at Hamilton on a 6 furlong grass track in soft conditions.

Single Direct was bred in the purple from the George Wilkes sire line, being a grandson of the mighty Single G, the "horse that time forgot".

Single G won 99 races, was placed in every event he contested and took his lifetime record at age 13 when he recorded 1.58.5. Single Direct's dam line traced back to the mighty Direct with an infusion of the great Grattan Loyal. He was certainly no breeding fluke.

Single Direct left New Zealand bound for Sydney by boat on November 27th, 1950 and after a 2 day stopover, he was then air freighted to Adelaide before completing the journey to Perth on board the "Manoora" which docked in Fremantle Harbour on December 11th.

He was accompanied by his half-sister Petite Direct, the much travelled Victorian star Amorous, and Huon Raider, who would all contest events at Gloucester Park during the carnival, along with a Dillon Hall two year old and a Double Cross yearling who were in transit to their new Perth owners.

The Dillon Hall 2yo was later named Dillon Grattan and won a total of 16 races in Perth before making a significant contribution to the WA breeding industry as a stallion.

Amorous boasted a serious record of 35 wins and over £20,000 in stakes and the SA Derby, three consecutive Snowtown Cups and Free for All's in both Victoria and South Australia.

He also finished third in the 1949 Inter Dominion final behind Single Direct to round out his significant resume. He would be handled in his Perth engagements by legendary horseman Albert (Darkie) Gath.

Petite Direct and Huon Raider would contest the heats of the Federation Handicap beginning on December 23rd and both Single Direct and Amorous would have to contend with the established WA stars of the day in the Golden Jubilee WA Trotting Cup on January 1st.

They would include Bill Johnson's very popular and prolific winning five year old Royal Shadow, the Howard Porter owned duo of Nyallo Scott and Gamble King, the sentimental and seemingly ageless Happy Man, the brilliant free legged mare Battle Song, Charlie Sweetman's Dallingwood, Frank Kersley's Plunderer and the great

champion of previous seasons, Dark David, to be reined by Bernie Cushing.

Single Direct was given a warm up night trial to familiarize him with the track but he and Amorous wouldn't race until they contested the pre-cup Free For All on Tuesday December 26th.

Royal Shadow warmed up for his Cup assignment with a brilliant victory in the Free For All on Saturday December 16th, coming from behind the eventual place-getters, Plunderer and Dallingwood, in spite of being forced very wide on the home turn. He returned to scale after his brilliant win to a thunderous ovation and emerged as the best of the locals in the upcoming Cup.

Meanwhile, the Federation Handicap got under way on Saturday December 23rd with the first four heats being contested.

With horses handicapped from the scratch mark back to 72 yards, it was exciting racing with the heats going to Beaudale, a 4/5 favourite for Ron Porter, Earl's Lady at 33/1 for Waroona trainer/driver Harry Wegner defeating the odds on favourite Hilda Grattan (Harold Richter).

The 15/1 chance Chico won the third heat from 60 yards for Wally Newland and the final heat of the night saw Arthur Hough's Double Note at 4/6 edge out Black Lee (Jack Jones) and Dillondale (Frank Kersley).

The second round of heats coincided with the debut of both Single Direct and Amorous in the FFA on Boxing Night.



In a sensation at the start, Happy Man stood on the mark and Single Direct had to take evasive action causing him to break stride and lose 30 metres in the process.

As Plunderer was being acclaimed the winner in the straight, the tenacious Amorous swooped on the back of a patient Darkie Gath drive to score in a photo, with Dallingwood close up in third for Ray Sweetman ahead of Royal Shadow and Single Direct which caught the field after his mishap at the start.

The next round of four heats in the Federation Handicap on Tuesday December 26th saw Super Junior successful at 7/2 for owner Norm Duncan and driver Laurie Robinson in heat five and Single Directs half-sister Petite Direct scored narrowly for visitor Edgar Kennerley over Wirra Girl (Arthur Hough) and the 1948 WA Derby winner Hilda Grattan (Harold Richter).

Black Lee atoned for his narrow defeat in the first round of heats by scoring by two inches for trainer/driver Jack Jones in a driving finish over Bert Fisher's Rockonda while Willack rounded out proceedings with a win in eighth heat for driver Lloyd Nolan with the flashy chestnut Red Sol finishing a close second from 72 yards for driver Max Johnson.

A season's record Tote Turnover was recorded on course when a remarkable figure of £36,365 was invested on the night as a huge crowd packed every vantage point at the track for the Boxing Night fixture.

With the £5,000 Cup to be contested on January 1, the tote figures backed up the bold call by the WATA Committee to bring Single Direct to Western Australia.

It is worth noting that the Perth Cup Stake to be conducted on the same day was only £3,000 pounds.

The "Trots" were clearly the leader of the pack in those halcyon days.

The final set of Federation Handicap heats, providing the last chance to qualify for the final, were conducted on Saturday, December 28th and heat nine saw the odds on and luckless Hilda Grattan run her third consecutive placing in the heats when Miss Eugowra edged her out for driver Frank Kersley.

Kersley was successful in the next two heats, courtesy of Avon King defeating the favourite Sandridge (Lorne Richter) in heat ten and Dillondale comfortably accounting for Prince Marlyn (Fred Kersley) in heat 11.

The 1/2 favourite Red Sol overcame his 72 yard handicap to win heat 12 for Max Johnson, thus ensuring a spread of runners from the scratch mark back to 72 yards for the final to be held on Saturday January 8th.

All attention now focused on the Cup on Monday January 1st.

With Single Direct reportedly trialing brilliantly over one and a half miles at a 2.5.0 rate on the Saturday morning prior to the Cup, he was a very firm favourite, with one punter taking an even £1,000 bet with a hapless bookmaker.

A crowd of 40,000 crammed into Gloucester Park and a record Tote turnover of £50,604 was created.

Plunderer, Nyallo Scott and Royal Shadow were the only other runners under 10/1 but they had no answer to the brilliance of the champion New Zealander.

Kennerley allowed Single Direct to settle at the rear after a safe getaway before he sent him around the field with two laps to go, and although Royal Shadow went with him, Single Direct comfortably took up the running.

He extended his lead and surged further in front coming off the back straight the last time to win brilliantly by more than 10 yards. Royal Shadow held on for second ahead of Catalpa, Dark David and Plunderer.

The huge crowd acknowledged the best horse in Australasia long after he crossed the line to collect the £3,500 first prize and a Trophy donated by the Commonwealth Government.

However, Single Direct was not finished yet and on Wednesday January 3rd, he time trialed in front of 4,000 people at Gloucester Park with aid of Petite Direct and Dixie Stretta as galloping pacemakers.

In spite of running into a strong sea breeze up the main straight, he recorded a time of 2.01.2 thus setting a new State Record for which his connections received £100.

Amorous also time trialed but could only record 2.04.5. After declaring that the "two minute barrier would never be broken at Gloucester Park as the track is too small", owner Bruce Elliott stated that Single Direct would run in the Free For All on Federation Handicap final on January 8th in an attempt to overtake Highland Fling as the greatest stake earner in Australasia.

And so to the final night of this extraordinary summer carnival which had broken all attendance and tote records. A massive crowd again packed into Gloucester Park to view both the Federation Handicap Final and the Free For All featuring both Single Direct and Amorous.

Double Note started favourite in the Handicap Final but it was the 4/1 equal second favourite Super Junior who took up the running for Laurie Robinson after beginning quickly from the 12 yard line.

He maintained the lead in spite of challenges from firstly Petite Direct, who faced the breeze, and secondly Double Note who was posted three-wide for over two laps. Neither Robinson nor Kennerley were prepared to allow Double Note (Arthur Hough) to cross and meanwhile, Beaudale, also

4/1, was getting a cosy run behind the leader for driver Ron Porter.

Turning for home, Super Junior kicked away allowing Porter to take a narrow opening and half way up the straight, Beaudale took over and scored narrowly from a gallant Super Junior with Willack and Avon King flashing home for third and fourth respectively. Red Sol was unable to overcome his back mark but he recorded a fast mile rate of 2.9.3 in finishing seventh.

The Free For All saw Single Direct at unbackable odds of 1/6 after 1/4 had been bet.

With Amorous stepping cleanly to lead, Single Direct's task was made harder when he lost ground at the start. However, Edgar Kennerley allowed him to settle before quickly sending him around the field to race outside the leader.

Although eventual second place-getter Gamble King challenged him briefly turning for home, Single Direct strode away to ensure the Australasian Stakes record was his with the £530 first placed stake taking his earnings beyond Highland Flings record of £33,000. Amorous held on for yet another placing behind Single Direct with Dallingwood finishing fourth.

This bought the Summer Carnival to a close with both the record attendances and Tote figures confirming the success of bringing the New Zealand champion to Perth.

He certainly performed beyond all expectations, made even more remarkable considering the arduous travel component he had to contend with. He was a true champion and boarded the "Manoora" for the return trip with the upcoming Inter Dominion Championship in Christchurch as his next mission.

Although unsuccessful in the Christchurch series, Single Direct continued to race on at the highest level recording his last major win in the 1955 Alexandra Park Free For All, some 8 years after winning the Auckland Cup at the same venue.

In 1996, Single Direct was inducted into the New Zealand Hall of Fame. Perhaps it is Single Direct who should have assumed the mantle of "the horse that time forgot".

He was truly an enduring and great champion that captured the admiration of the crowds that flocked to Gloucester Park for the celebration of the Anniversary of Australia's Federation.

And one final word....the concept of winners only qualifying for the final of the Federation Handicap produced a magnificent race and perhaps the concept is worth reviving for the excitement and interest that it could provoke as the sport struggles for recognition in the modern era.

THE SINGLE DIRECT TROPHY

Single Direct was raced by Bruce Elliott and in his retirement Single Direct was well-cared for by Mr Elliott's wife Maisie who was Edgar Kennerley's sister.

In the late 1960s Single Direct was called on to lead the field out for the Bay Of Plenty Trotting Club's Single Direct Stakes for 2yos.

His 1951 WA Trotting Cup trophy was attached to the race each year and the connections of the winning horse were allowed to keep the trophy for a year.

The winner of the inaugural Single Direct Stakes was a Hi Los Forbes gelding called Willie Mac which was raced by Neville Williams and Malcolm McDonald.

Malcolm McDonald played for the All Blacks and entered the record books as the scorer of the first try against the Springboks on their 1956 tour of New Zealand.

Single Direct suffered a nasty fall in 1969 and the 27yo was laid to rest at Mrs Elliott's Tauranga property.



Image: Part-owner Malcom McDonald with Maisie Elliot after the win of Willie Mac in the inaugural single direct stakes.



For many people, the festive season is a jolly time to connect with others and celebrate the year. But financial issues, work pressures, family conflict and loneliness can increase stress for some people in the lead up to Christmas and the New Year.

For free mental health and wellbeing support don't hesitate to contact Racing Assist on 1300 307 912 and talk to someone who can help!



Need support now? We're here to help 24/7

100% PRIVATE & CONFIDENTIAL
1300 307 912 racingassist.com.au

ONE PERSON'S TRASH IS ANOTHER PERSON'S TREASURE

by Alan Parker

A little known piece of Perth's history and a major event at Gloucester Park have come to light with the gifting of a 76yo rubbish bin to Gloucester Park.

The 24 gallon galvanised metal bin belonged to the US Navy and was used at Gloucester Park on 22nd December 1944 when the US Navy held a gigantic Christmas Party to say thank you to the people of Western Australia for their hospitality.

After the party had finished the bin finished up with long-time WA Trotting Association employee Roy Hallam who will be well-known to some of the older members of the fraternity.

Mr Hallam was the Association's cashier/clerk for more than 30 years and was responsible for the collection of nomination and acceptance fees, registration of colours and bookmakers fees.

When he retired in 1969 Mr Hallam's abiding memory of Gloucester Park was during WW11 when long heavy planks were used to prevent enemy aircraft from landing on the course.

Mr Hallam's grandson Colin Hextall has had the bin in his shed for some years and recently decided that it should be returned to Gloucester Park in light of its connection to the big event held at the track on the 22nd December 1944 – 75 years ago this Christmas.

The Navy party at Gloucester Park that sunny afternoon was bigger than anybody anticipated and a report in the Daily News on December 23rd advised that "Tickets fell far short of the number required for 50,000 guests and children were being told to go ahead without them".

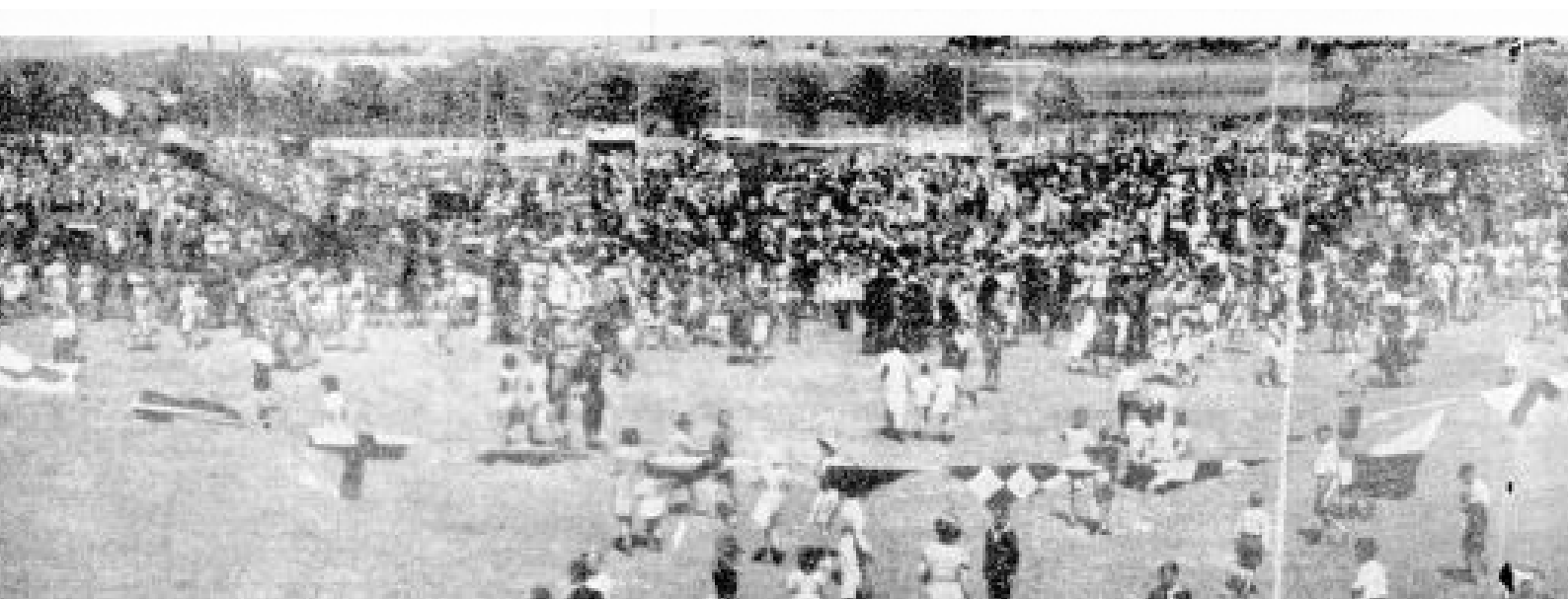


Image: 1944, US Navy Christmas Party at Gloucester Park

The party was aimed at the children of Perth and estimates were that 30,000 children attended and pictures in the local press showed Perth's public transport system struggling to cope. Perth's Sunday Times newspaper put the crowd at some 70,000 people.

Everything on the day was free with the cost borne by the US Navy and the children were intrigued to find that Father Christmas spoke with an American accent.

Soft drinks, ice-creams and lollies were the order of the day although the "Lost Kids" section was busy with more than 500 customers. The lost children's area was serviced by a US padre, another officer and 25 enlisted men which gives some idea of the size of the entire operation.

Clearly the US navy personnel were missing their families at Christmas time and the party was one way of compensating for being away from family.

As for our rubbish bin, it was manufactured in the USA in 1943 by the Cincinnati Galvanizing Company which also made buckets, waste baskets and the King Seamless Potato Ricer.

The bin bears a US Navy stencil on the outside which includes the name of the USS San Pedro which was a Tacoma Class patrol frigate and was in commission from 1943 to 1945. She is the only US naval ship to carry that name.

She had a colourful history during those two years and in October 1944, off Leyte in the Philippines, she rescued 178 survivors from a ship which was part of a re-supply convoy while at the same time helping to repulse a third attack on the sinking ship.

The San Pedro left the South-West Pacific on 17th December 1944 and went to Boston for overhaul so just how one of her rubbish bins happened to find its way to Gloucester Park will remain a mystery as the San Pedro didn't appear to have ever visited Fremantle.

After being repaired the San Pedro was de-commissioned in July 1945 and turned over to the Russian Navy who were being courted to enter the Pacific War against the Japanese.

Fremantle may seem a long way from the Pacific Ocean and prior to the bombing of Pearl Harbour the 29 strong US Navy's Asiatic Submarine fleet was based in the Philippines along with a number of other vessels.

Japanese bombings of the Philippines base saw the Americans looking for alternatives.

After abortive attempts to establish a submarine headquarters and repair base in Darwin and Java on 3rd March 1942 the submarine tender USS Holland arrived in Fremantle to establish the port as home for eight submarines of the Asiatic Fleet.

In addition to their Fremantle operation the US Navy also established an Auxiliary Submarine Base at Albany. **

The American submarine base in Fremantle was the largest in the Southern Hemisphere and included anti-aircraft gun emplacements on Fremantle's beaches and by the end of 1943 there were 30 American submarines operating out of the Fremantle facility and upwards of 6000 American sailors in the port city.

All-up approximately 170 American, British and Dutch submarines made a total of 416 war patrols out of the Fremantle Submarine Base during WW2.

** Albany folk-rock band The Waifs enjoyed a good deal of success with a single called Bridal Train which tells of the US Navy re-locating the Australian wives of American sailors to the USA to be with their husbands. The grand-mother of the founders of The Waifs married an American sailor serving in Western Australia during WW2.

"Bridal Train" can be heard on You Tube at <https://www.youtube.com/watch?v=BAjDzP0r7KY>



Image: Colin Hextall & John Burt, President Gloucester Park Harness Racing Club

THE MISSING PORTER MEMORIAL WINNER

by Alan Parker

The 2019 edition of the Howard Porter Memorial was won by the Greg and Skye Bond trained Vampiro with Colin Brown at the reins.

The racebook that night had a list of the previous winners of the Porter Memorial and it was headed by none other than the legendary Pure Steel.

That listing was brought to the attention of long-time owner Barrie Devereux who recalled that he had won a Porter Memorial with a New Zealand bred gelding called Grand Slam and the horse's name wasn't on the list of previous winners.

"I am sure that Grand Slam won a Porter Memorial and I have got a photo at home to prove it," Mr Devereux said.

The late Howard Porter was a Life Member and former President of both the WA Trotting Association and Fremantle Trotting Clubs and when he died on 8th May 1978 both clubs took steps to honour Howard Porter with Memorial races.

The Fremantle Trotting Club was first club off the rank and on Monday 9th October 1978, at Richmond Raceway, it ran the Howard Porter Memorial won by Grand Slam for trainer/driver Val Pereira.

A little over a month later at Gloucester Park on 17th November, the WATA ran the Howard Porter Memorial and it was won by Pure Steel for trainer Mark Roberts and driver Phil Coulson.

The Fremantle Race had previously been known as the Birthday Gift but was renamed in 1978 to mark the passing of Howard Porter.

When the Howard Porter Memorial is run at Gloucester Park in 2020 the racebook will list both winners of the 1978 edition.



OFF
THE TRACK_{WA}



MORE THAN A RACEHORSE



THE NAME SAYS IT ALL

by Alan Parker

The Italian translation of Sangue Reale is Royal Blood and if ever a horse is well-named it is Michael Brennan's 4yo Art Major gelding Sangue Reale.

He is the third foal produced by his dam Christisimo and all three have been winners with Sangue Reale taking out the Group One 4yo Classic at Gloucester Park on November 29th after stewards upheld a protest against Shockwave which was first past the post.

With his third placing in the Golden Nugget a fortnight later Sangue Reale's record stands at seven wins and 15 placings for stakes of \$157,309.

Sangue Reale's older full-sister Miss Sangrial, also trained by Michael Brennan, has a record of 16 wins and 15 placings in 53

starts and \$202,314 in stakes although she is yet to record a Group One success.

They are from the New Zealand maternal family tracing to McDonald's Rothschild Mare which came through a former smart Western Australian mare in Krina Bella.

The New Zealand bred Krina Bella was raced by Roy and Diane Annear and won a dozen races in Western Australia for her trainer/driver Chris Lewis and was runner-up to Princess Lelaine in the 1983 WA Oaks.

After her track career finished Krina Bella returned to her homeland at a time when semen transport didn't exist and her



third foal for the Annears was a Smooth Fella filly called Bellissimo which was later re-named Mio Bellissimo when brought to Australia.

Mio Bellissimo is the grand-dam of Miss Sangrial and Sangue Reale while another daughter of Mio Bellissimo is the grand-dam of the Greg Bond trained Ohoka's Bondy which won a Golden Slipper Stakes at Gloucester Park.

A full-sister to Ohoka's Bondy in Dancing Diamonds won nine races and \$343,276 and is now the dam of superstar New Zealand filly Princess Tiffany which won a NSW Oaks, New Zealand Oaks and Queensland Oaks.

Princess Tiffany's half-brother Rock Diamonds won the 2017 WA 4yo Championship at Group Two level.

An Olympic gold medallist in field hockey, Michael Brennan spent a considerable period of time watching and learning from the likes of Russell Jack in Victoria and WA Racing Hall of Fame inductees Fred Kersley and Gary Hall before going out on his own as a trainer a dozen years ago.

He came to national prominence in 2012 when Im Victorious won the WA Derby as a 3yo and the Golden Nugget as a 4yo before winning a Fremantle Cup as a 5yo.

Sangue Reale's win in the 4yo Classic in November was Brennan's fifth Group One success as a trainer.

Sangue Reale's regular driver Michael Grantham, Brennan's nephew, elected to drive Bletchley Park in the 4yo Classic and Chris Voak scored a last minute drive on the \$71.00 chance.

Sangue Reale finished up four back on the fence before Voak extracted him from traffic and made a valiant attempt to get past Shockwave in the straight.

A post-race protest against the result was upheld by the stewards and Voak recorded his fourth win in a Group One race.

A week later he made it five Group One wins at Gloucester Park when Gotta Go Gabbana led throughout to take out the Mares Classic.



FRIDAY 13TH IS LUCKY FOR SOME

by Alan Parker

A fortnight after losing a controversial Group One 4yo Classic to Sangue Reale on protest, Shockwave finally broke through for his maiden Group One win in the \$200,000 Retravisson Golden Nugget at Gloucester Park on Friday December 13th.

Shockwave came from near last three and four wide in the last lap to grab the pace-making Patrickthepiranha in the shadows of the post with Chris Voak on Sangue Reale desperately trying to get off the leaders back throughout the last 250 metres.

Shockwave's driver Aiden De Campo, sensing the danger from Sangue Reale, moved from the four-wide position, after straightening, to the girth of Patrickthepiranha to ensure than the opening never eventuated for Voak.

Shockwave had finished second in Group One races on four occasions, including three as a 2yo, and finally shook off his bridesmaid tag in the State's premier race for four-year-olds.

A \$46,000 purchase at the local yearling sale in 2017 Shockwave is raced by Gloucester Park committeeman Kevin Jeavons and WA Standardbred Breeders committeeman Howard King and Friday's win lifted the horses record 10 wins and 11 places in 30 starts and more than \$291,000 in stakes.

Being a son of the now defunct Mach Three, Shockwave is named for his sire in that reaching a speed of Mach Three creates a Shockwave.

Kevin Jeavons is no stranger to Group One success having won the Max Treuer Memorial in four successive years with the New Zealand bred gelding Washakie and a Golden Slipper and 2yo WA Sales Classic with Aikido Whitby.

While Jeavons now has a double figure tally of Group One wins, it was the first win in a Group One race for Shockwave's trainer Ryan Bell.

Bell's previous best win in 139 wins as a trainer was with Schinzig Buller in a Group Three Christmas Gift a decade ago.

Schinzig Buller was raced by Bell and good mate Richie Polak and trained for them by Greg Harper when Kade Howson drove him to win the 2008 Golden Nugget.

Bell has cut back on his driving in recent seasons to concentrate on training.

"Right from when I started as a 15yo working for Andrew De Campo my passion was to train rather than drive." Bell said.

A couple of years ago Bell was chatting with Kevin Jeavons and asked Jeavons if he "wanted to buy me one to train".

"I like the challenge of picking out a yearling and turning it into a race-horse and will be definitely at the local sale again this year."

Bell has driven some 485 winners with his biggest success as a driver coming behind the Greg Harper trained Power Of Tara in the Group One Fremantle Cup in January 2009.

Even though he was pretty confident of success going into the Nugget, Bell nearly didn't go to Gloucester Park that night.

"I was as crook as a dog with a dose of the flu and every joint was aching," Ryan revealed, "mind you I didn't feel anywhere near as bad after the win."

"It was good to get the monkey off the back as I was getting sick of running second and was tired of being told it "was good to have a horse good enough to start in a Group One."

Bell's relationship with 27yo driver Aiden De Campo also goes back to his start in harness racing with Aiden's father.

"He was just a snotty-nosed kid when I was working with Andrew," Ryan recalled.

"His drive in the Nugget was superb and as good an effort in a Group One that you will see."

As for Shockwave there are some big plans in the pipeline.

"He pulled up a treat after the Nugget and he could have started again the next week if that had been the plan."

"The way he handles himself in his races and his ability to sustain a run and to do it week in week out is what makes him a pretty special horse."

Bell intends on starting the stallion in the Fremantle Cup and WA Pacing Cup in January.

"He has earned the chance to have a crack at the open class horses and will certainly be competitive."

"The Nugget field this year is the best I have seen for depth since Schinzig Buller won the race and that field included the likes of Im Themightyquinn, Mysta Magical Mach and Argent Treasure."

Good horses have the ability to relax away from the cauldron that is the race-track and Shockwave possess that ability.

"He is still a stallion but you wouldn't know it from his behaviour at home", Bell said.

"He is a complete gentleman and quite lazy until he gets onto the track and then it is game on".

The 2019 Golden Nugget runner-up Patrickthepiranha was also purchased at the local yearling sale, for \$30,000, and his record after the Nugget stands at 10 wins and five placings in 23 starts and stakes of \$215,106.

Both Shockwave and Patrickthepiranha were bred by Kevin and Annette Charles at their Hopeland property.

"We have a full-brother to Patrickthepiranha in the 2020 WA Sale on March 1st so fingers crossed we get plenty of interest from potential buyers", Kevin Charles said.



NORTH EASTERN DISTRICTS LEGEND ON CUSP OF MAJOR MILESTONE

by Alan Parker

When Girlfromdandalup won at the Central Wheatbelt meeting on November 10th it brought up win number 499 for his trainer Tom Groves.

Tom's tally of 499 winners, as either a trainer and/or driver, is remarkable for the Kellerberrin farmer who has only ever treated harness racing as a hobby and as a relief from the stresses associated with the uncertainties of farming.

Born in Katanning on 17th August 1945, Tom's father Bob Groves was a farmer at Tambellup before moving the family to Meckering where he had a wheat and sheep farm.

As a youth Tom showed outstanding ability as a footballer and in 1959 he was selected in the State Schoolboys AFL team which travelled to Brisbane to compete. He was the youngest member of the team at just 14yo.

Best player at the carnival that year was Tom's team-mate Graham Ramshaw.

Ramshaw went on to become a three-time premiership player with WAFL club Perth and also played for Fitzroy in the VFL while Tom later played in a premiership for Meckering.

Tom was however bitten by the harness racing bug which was hardly surprising given that his father Bob had trained a horse or two since the early fifties and won a race at the now defunct Goomalling track in July 1954.

Tom moved to Kellerberrin in 1960 to work with Bryce Stevens at his stables and in 1962 he worked for Ray Barnes on his farm south of Kellerberrin before moving back to Meckering for a period.

On 30th October 1963 Tom drove his first winner with Gordy's Luck at Cunderdin. The horse was trained by his father but it was tough for young drivers at that time.

"We didn't have things like novice or junior concessions and with huge fields and all standing starts it was tough having to take on the senior drivers from the outset", Tom recalled.

In January 1964, not long after spending £1000 on a brand new Holden ute, Tom and his father landed a decent plunge with Falcarragh at Northam.

"I had scrounged every spare quid I could and we had a decent bet on Falcarragh. On the Monday I went back to Luscombe

Motors Northam and paid off the £700 that was owing on the ute", he said.

Falcarragh narrowly beat the Fred Doy trained Hardie Scott which was owned by John Luscombe.

In 1966 Tom and his brothers Laurie and Mervyn bought a family farm at North Kellerberrin which was later sold and Tom bought the "little block" of some 600 acres which he and wife Marie still own today although they now live in town.

As should be expected from a trotting trainer, Tom met Marie at the Wyalkatchem trots where she was helping her father George Tiller with his horses. The young couple married in 1965.

Tom and Marie won their first race together when the mare Bow Mist scored at Kellerberrin in October 1967 and the daughter of Hall Of Fame legend Beau Don was to provide the young couple with a huge win a couple of years later when she won a Qualifying Stakes at Gloucester Park.

"She was the best horse I trained although Ranton was probably more brilliant. He just couldn't handle the standing starts and he would have been outstanding with a mobile barrier", Tom said

Bow Mist led and won her Qualifying Stakes comfortably from Glamour City and Bernbon and the official fluctuations showed the mare firming from 25/1 to 16/1.

"We had just received an \$80 tax refund and gleefully took the 66/1 offered early the bookies," Tom recalled.

"We were nervous all the way home as \$5,280 was a huge amount in 1969", Marie said.

To put the \$5,280 result in perspective it represented five times the gross stake of the race. The equivalent race today is worth \$18,000 and five times that is \$90,000.

Bow Mist won 12 races and worked her way down to fast-class in Perth with seven city wins including heats of both the Christmas and Easter Handicaps.

Tom qualified both Ranton and Bow Mist for the famous 1971 Christmas Handicap Final won by Mount Eden from No Dill.

Image: Tom Groves & Hilo Angus at CWHRC





Among the other city class horses raced by Tom and Marie were Farmer Elect which won 13 races including four in the city and a half-sister to Daintys Daughter in Daintys Last which won six races including a couple at Gloucester Park.

In the mid-seventies Tom and Marie Groves bought a mare called Hilectra from Miss Hilda Anderson of Janebrook Stud.

Hilectra won three races and had just five foals for Tom and Marie and just two winners.

The first of those winners was Hilo Ben and the success with Hilo Ben saw them adopt the Hilo prefix for the majority of the horses they have bred since.

Despite what Harness Racing Australia's records say with three wins, Hilo Ben actually won 19 races for Tom Groves including eight at Gloucester Park and was placed in the 1984 Golden Slipper Stakes.

His younger full-brother Hilo Mike won 16 races with seven at Gloucester Park and he too was placed in a Golden Slipper Stakes and Champagne Stakes as a 2yo.

The pair's sire Captain Armbro had won the Golden Slipper Stakes in 1974 and stood at George Tiller's Kellerberrin stud.

The number of races won by horses bearing the Hilo prefix and bred by Tom and Marie Groves currently stands at 130 and includes Hilo Rex (18 wins), Hilo Angus (13 wins), Hilo Beejay (11 wins) and Hilo Rambo (10 wins).

It is a remarkable record as the couple generally only breed a couple of foals each year.

At times when farming was especially hard going the horses were Tom and Marie's main source of income.

Tom Groves retired from race-driving in 2002 and has given a number of the State's most promising junior drivers a leg-up in terms of getting their careers started.

Stephen Reed's first winner for other than his father was Sportsman's Lady for Tom Groves while Jocelyn Young's first winner, for other than her then boss Nathan Turvey, was the Tom Groves trained Light Of My Life.

That Nathan Turvey should recommend Jocelyn as a driver was hardly surprising as he had teamed with Tom to land 42 winners after the pair joined forces when Stephen Reed moved to Bunbury.

More recently Deni Roberts, Dean Miller and Mitch Miller have all won races for the Groves stable. Deni brought up her 100th career win on the Tom Groves trained Hilo Angus at Northam last May.

Tom and Marie have been volunteers for more than 50 years for the Kellerberrin Trotting Club and now the Central Wheatbelt Harness Racing Club and take great pride in the success of those clubs.

Tom Groves has seen a lot of changes in the near 60 years he has been actively involved with the times horses are capable of running tumbling and a plethora of changes to handicapping systems.

"There is no point complaining about handicapping – it is what it is and you have just got to get on with it and try to win a race or two," he said.

Tom, Marie and their daughter Di aren't too fussed with the result of the races their horses start in just so long as the horse and driver return safely ready for next week.

"The best thing about going to the trots is catching up with friends and making new ones," Tom said.

"It is also a bonus seeing the young drivers improving every time they go out and being a part in their progress to become established drivers in our industry."

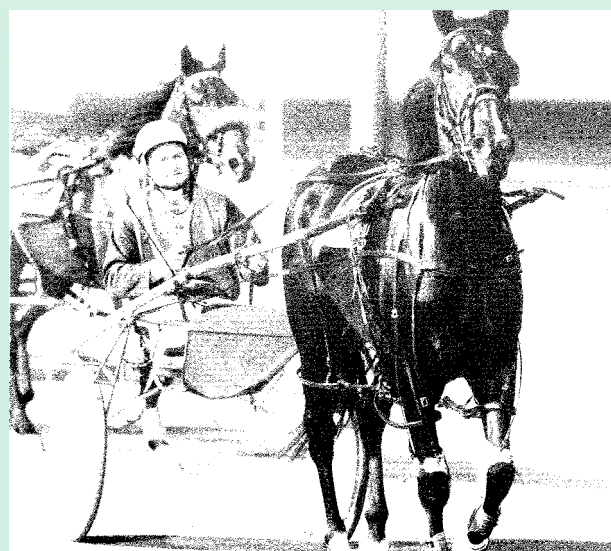


Image: Hilo Rambo, bred and raced by Tom & Marie Groves.

Vale Stephen Blake

Involved as a breeder, owner, trainer and driver between 1975 and 2005, Stephen Blake died in early December at the age of 68 years.

Stephen first came to notice as a driver in the Great Southern in 1975 with his first winner as a driver behind the Don Wegner trainer Trumby at Albany in January of that year.

He trained the first of 38 winners a month later when Wiluna Lad won at Albany.

The first good horse he was involved with was the diminutive stallion Titahi Bay which eventually found its way to the stables of Gary Hall where it won a string of races in the city and was placed in a Fremantle Harness Racing Club 4yo classic.

When Titahi Bay finished racing Stephen Blake was more than happy to use him as a stallion and he bred Stroicker which won six races and finished second in an Autumn Gift.

Stroicker was out of the Maple Lanes Strike mare Pavida Strike as was the best horse Stephen bred in Glenmorgan.

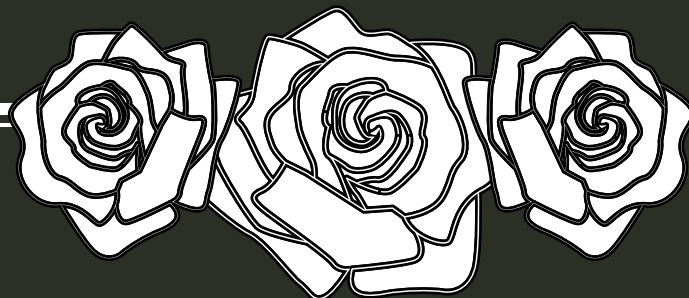
Glenmorgan won 11 races including a Great Southern Derby as a 3yo and the Group Three Christmas Gift and 4yo Sires Stakes final as a 4yo.

Lewis Road, a full-sister to Stroicker, gave Stephen further success as a breeder when she produced Morganator which took a record of 1:56.9 and won 17 races and \$161,125 in stakes.

Stephen trained Morganator for its first four wins before the gelded son of Resonator entered the stables of Peter Anderson. Morganator's biggest win came in the 2008 Marathon Handicap.

Stephen bred other winners in Morgan Valance, Morgalex. Morganoon and Sir Louie.

Deepest sympathies are extended to all members of Stephen's family on their sad loss.



Community / TAB

Giving back

TO THE WA COMMUNITY

LIGHTS FOR LIFELINE

Community TAB is the Foundation Partner of Lifeline WA's Lights for Lifeline campaign, and this year has pledged \$4,000 to the campaign which will help train a volunteer who will answer calls from people in need.

Lights for Lifeline shines a light on suicide awareness throughout the festive season, and supports people who are lonely or in crisis this Christmas. Every 32 seconds, someone will call Lifeline WA lonely or in crisis this Christmas.

The 47,000 lights on the Lights for Lifeline Christmas tree in Yagan Square represents every person who called Lifeline WA this year.

Lifelines suicide prevention service is available 24/7 through the Telephone Crisis Support line on 13 11 14.



COMMUNITY TAB GRASSROOTS NETBALL HERO GRANT

In conjunction with Netball WA, Community TAB is launching the Hero Grant for Netball WA grassroots sites.

Netball WA grassroots sites are welcome to submit a story to Community TAB/Netball WA about how their club combats issues in the community, overcomes barriers for their participants, encourages participation and volunteering, and celebrates their indigenous culture.

Community TAB will be giving two \$2,500 Hero Grants to two grassroots sites who apply.

RACE CLUB COMMUNITY PROGRAM

Community TAB has been continuing to partner with WA race clubs in 2019 to raise funds for community groups. Over \$600,000 has been raised through the program.

Any race clubs that have already or will be taking part in the program in 2019 is going into the running to receive a \$4,000 grant from Community TAB for their race club.

The draw will take place in early January.

MUSCULAR DYSTROPHY WA

Community TAB supported Muscular Dystrophy WA Marquee Day fundraiser at Perth Racing again last weekend, by matching donations up to \$5,000, to support MDWA in delivering social programs, advocacy, counselling and NDIS support.

Amy Evans, who has muscular dystrophy, is the event ambassador and currently owns shares in six racehorses and has cheered home 18 winners.

"I've been involved in horse racing for a few years now and I couldn't imagine my life without it. I love everything about it, from watching the horse you picked out as a yearling winning their first race, to getting dressed up," said Amy.



Image: MDWA at Perth Racing

"It's great that I've been able to help MDWA raise some funds doing something that I love, with these funds going towards activities such as their Young Adult Social Group which I take part in."

MDWA CEO Hayley Lethlean said the organisation is very grateful for the extra support from Community TAB.

"Without any ongoing government funding, by partnering with us Community TAB helps MDWA to raise funds and awareness for our community and their condition and we are delighted they have chosen to support us once again at our 2019 Marquee Race Day" she said.

"This event is an annual fundraiser that provides much-needed funds to ensure MDWA can deliver social programs, advocacy, counselling and NDIS support as part of our community services program. It's what we call Support For Life."

"We are grateful for the support of Community TAB for the second year in a row, providing dollar for dollar donation support up to \$5,000," says Hayley.



Image: Community TAB Hero Grant for Netball WA

2019/20 FEATURE RACES

| DATE | DAY | RACING CLUB | FEATURE RACE NAME |
|----------|----------|-----------------|---------------------------------|
| 3/01/20 | Friday | Gloucester Park | TROTTERS CUP 3YO+ SS |
| 10/01/20 | Friday | Busselton | GENERIC RWWA FEATURE |
| 10/01/20 | Friday | Gloucester Park | FREMANTLE PACING CUP MS |
| 11/01/20 | Saturday | Albany | GENERIC RWWA FEATURE |
| 17/01/20 | Friday | Busselton | GENERIC RWWA FEATURE |
| 17/01/20 | Friday | Gloucester Park | WA PACING CUP MS |
| 19/01/20 | Sunday | Narrogin | GENERIC RWWA FEATURE |
| 24/01/20 | Friday | Busselton | GENERIC RWWA FEATURE |
| 24/01/20 | Friday | Gloucester Park | RAY DUFFY MEMORIAL 3YO+ MS |
| 24/01/20 | Friday | Gloucester Park | NIGHTS OF THUNDER MS (Level 11) |
| 24/01/20 | Friday | Gloucester Park | IM THEMIGHTYQUINN MS |
| 25/01/20 | Saturday | Albany | ALBANY CUP |
| 26/01/20 | Sunday | Williams | GENERIC RWWA FEATURE |
| 26/01/20 | Sunday | Williams | JIMMY DRAPER MEMORIAL |
| 31/01/20 | Friday | Gloucester Park | CITY OF PERTH CUP 3YO+ MS |
| 31/01/20 | Friday | Busselton | BUSSELTON CUP |
| 14/02/20 | Friday | Albany | GENERIC RWWA FEATURE |
| 1/02/20 | Saturday | Northam Harness | NORTHAM PACING CUP 3YO+ SS |
| 1/02/20 | Saturday | Northam Harness | VILLAGE KID SPRINT |
| 1/02/20 | Saturday | Northam Harness | GENERIC RWWA FEATURE |
| 2/02/20 | Sunday | Bridgetown | BRIDGETOWN CLUB FEATURE |
| 7/02/20 | Friday | Gloucester Park | DAINTYS DAUGHTER CLASSIC 3YO MS |
| 9/02/20 | Sunday | Collie | KING COAL CUP |
| 9/02/20 | Sunday | Collie | JOHN MARTIN MEMORIAL SS |
| 29/02/20 | Saturday | Albany | GENERIC RWWA FEATURE |
| 7/02/20 | Friday | Gloucester Park | GOVERNORS CUP MS (Level 15) |
| 26/01/20 | Sunday | Williams | JIMMY DRAPER MEMORIAL |
| 31/01/20 | Friday | Gloucester Park | CITY OF PERTH CUP 3YO+ MS |
| 31/01/20 | Friday | Busselton | BUSSELTON CUP |
| 14/02/20 | Friday | Albany | GENERIC RWWA FEATURE |
| 1/02/20 | Saturday | Northam Harness | NORTHAM PACING CUP 3YO+ SS |
| 1/02/20 | Saturday | Northam Harness | VILLAGE KID SPRINT |

| RACE CONDITIONS | GROUP TYPE | FEATURE STAKES |
|---|------------|----------------|
| TROTTERS HWOE \$12,000+ CONDITIONED STAND (CONCESSIONS CLAIMS ELIGIBLE) (Level 7) (Concessions for Novice Driver) | GT1 | \$50,000 |
| TBA | OT | \$7,000 |
| FFA OPEN (NO CONCESSION CLAIMS) (Level 15) | G1 | \$300,000 |
| TBA | OT | \$10,000 |
| TBA | OT | \$7,000 |
| FFA OPEN (NO CONCESSION CLAIMS) (LEVEL 15) | G1 | \$450,000 |
| TBA | OT | \$10,000 |
| TBA | OT | \$7,000 |
| FFA OPEN (NO CONCESSION CLAIMS) (LEVEL 15) | BL | \$25,000 |
| HWOE LT \$70,000 (CONCESSIONS HWOE LT \$81,000) ALSO ELIGIBLE - HWOE LT \$100,000 With L5\$ LT \$4,500 Not Eligible HWOE LT \$20,000 | G2 | \$50,000 |
| HWOE LT \$40,000 (NO CONCESSION CLAIMS) Not Eligible HWOE LT \$20,000 (Level 9) | G3 | \$30,000 |
| HWOE LT \$40,000 (CONCESSIONS HWOE LT \$51,000) ALSO ELIGIBLE - HWOE LT \$70,000 With L5\$ LT \$2,250. Preference to HWOE \$25,000+ (Level 9) (Concessions for Novice Driver) FIELD SELECTION DISCRETION APPLIES. | OT | \$20,000 |
| TBA | OT | \$7,000 |
| HWOE \$3,000+ HANDICAP STAND (CONCESSIONS CLAIMS ELIGIBLE) Preference to HWOE \$3,000+ (Level 3) | OT | \$7,000 |
| (CONCESSIONS CLAIMS ELIGIBLE) | G2 | \$50,000 |
| Preference to HWOE \$3,000+ (Level 3) | OT | \$10,000 |
| TBA | OT | \$10,000 |
| HWOE \$20,000+ HANDICAP STAND (CONCESSIONS CLAIMS ELIGIBLE) Not Eligible HWOE LT \$20,000 (Level 9) (Concessions for Novice Driver) | G3 | \$30,000 |
| HWOE LT \$40,000 (CONCESSIONS HWOE LT \$44,500) ALSO ELIGIBLE - HWOE LT \$50,000 With L5\$ LT \$2,250. Preference to HWOE \$25,000+ (Level 9) (Concessions for Novice Driver) | OT | \$20,000 |
| TBA | OT | \$10,000 |
| HWOE LT \$3,000 (NO CONCESSION CLAIMS) Preference to HWOE \$1+ CLUB FEATURE | OT | \$7,000 |
| Fillies & Mares AGE OPEN (NO CONCESSION CLAIMS) (Level 1) (Concessions for Novice Driver) | G2 | \$50,000 |
| HWOE \$6,000+ HANDICAP STAND (CONCESSIONS CLAIMS ELIGIBLE) Preference to HWOE \$6,000+ (Level 5) (Concessions for Novice Driver) | OT | \$7,000 |
| HWOE \$3,000+ HANDICAP STAND (CONCESSIONS CLAIMS ELIGIBLE) Preference to HWOE \$3,000+ (Level 3) (Concessions for Novice Driver) | OT | \$7,000 |
| TBA | OT | \$10,000 |
| FFA OPEN (NO CONCESSION CLAIMS) (Level 15) (Concessions for Novice Driver) | G2 | \$50,000 |
| HWOE \$3,000+ HANDICAP STAND (CONCESSIONS CLAIMS ELIGIBLE) Preference to HWOE \$3,000+ (Level 3) | OT | \$7,000 |
| (CONCESSIONS CLAIMS ELIGIBLE) | G2 | \$50,000 |
| Preference to HWOE \$3,000+ (Level 3) | OT | \$10,000 |
| TBA | OT | \$10,000 |
| HWOE \$20,000+ HANDICAP STAND (CONCESSIONS CLAIMS ELIGIBLE) Not Eligible HWOE LT \$20,000 (Level 9) (Concessions for Novice Driver) | G3 | \$30,000 |
| HWOE LT \$40,000 (CONCESSIONS HWOE LT \$44,500) ALSO ELIGIBLE - HWOE LT \$50,000 With L5\$ LT \$2,250. Preference to HWOE \$25,000+ (Level 9) (Concessions for Novice Driver) | OT | \$20,000 |

2019/20 FEATURE RACES

| DATE | DAY | RACING CLUB | FEATURE RACE NAME |
|----------|----------|-----------------|---|
| 1/02/20 | Saturday | Northam Harness | GENERIC RWWA FEATURE |
| 2/02/20 | Sunday | Bridgetown | BRIDGETOWN CLUB FEATURE |
| 7/02/20 | Friday | Gloucester Park | DAINTYS DAUGHTER CLASSIC 3YO MS |
| 9/02/20 | Sunday | Collie | KING COAL CUP |
| 9/02/20 | Sunday | Collie | JOHN MARTIN MEMORIAL SS |
| 29/02/20 | Saturday | Albany | GENERIC RWWA FEATURE |
| 7/02/20 | Friday | Gloucester Park | GOVERNORS CUP MS (Level 15) |
| 14/02/20 | Friday | Gloucester Park | THE LEWIS FILLIES & MARES MS |
| 15/02/20 | Saturday | Northam Harness | THE PETER DEMPSTER MEMORIAL |
| 16/02/20 | Sunday | Williams | WILLIAMS CUP |
| 17/02/20 | Monday | Pinjarra | STAWA TROTTERS MOBILE |
| 21/02/20 | Friday | Gloucester Park | RWWA CUP MS |
| 21/02/20 | Friday | Gloucester Park | CADUCEUS CLUB CLASSIC 3YO MS |
| 22/02/20 | Saturday | Bunbury | MANEA CLASSIC 4YO & 5YO MS |
| 23/02/20 | Sunday | Collie | CLUB FEATURE |
| 28/02/20 | Friday | Gloucester Park | 2YO COLTS AND GELDINGS SALES CLASSIC FINAL MS |
| 28/02/20 | Friday | Gloucester Park | 2YO FILLIES SALES CLASSIC FINAL MS |
| 2/03/20 | Monday | Pinjarra | PINJARRA CUP MS |
| 2/03/20 | Monday | Pinjarra | GENERIC RWWA FEATURE |
| 2/03/20 | Monday | Pinjarra | TROTTERS SPRINT MS |
| 6/03/20 | Friday | Gloucester Park | 3YO COLTS AND GELDINGS SALES CLASSIC MS |
| 6/03/20 | Friday | Gloucester Park | 3YO FILLIES SALES CLASSIC MS |
| 6/03/20 | Friday | Narrogin | GENERIC RWWA FEATURE |
| 7/03/20 | Saturday | Albany | DENMARK CUP |
| 8/03/20 | Sunday | Collie | MARGARET & JOE SUVALJKO MEMORIAL |
| 13/03/20 | Friday | Gloucester Park | 4YO & 5YO CHAMPIONSHIP MS |
| 14/03/20 | Saturday | Bunbury | BATTLE OF BUNBURY 3YO MS |
| 15/03/20 | Sunday | Bridgetown | BRIDGETOWN CUP |

| RACE CONDITIONS | GROUP TYPE | FEATURE STAKES |
|--|------------|----------------|
| TBA | OT | \$10,000 |
| HWOE LT \$3,000 (NO CONCESSION CLAIMS) Preference to HWOE \$1+ CLUB FEATURE | OT | \$7,000 |
| Fillies & Mares AGE OPEN (NO CONCESSION CLAIMS) (Level 1) (Concessions for Novice Driver) | G2 | \$50,000 |
| HWOE \$6,000+ HANDICAP STAND (CONCESSIONS CLAIMS ELIGIBLE) Preference to HWOE \$6,000+ (Level 5) (Concessions for Novice Driver) | OT | \$7,000 |
| HWOE \$3,000+ HANDICAP STAND (CONCESSIONS CLAIMS ELIGIBLE) Preference to HWOE \$3,000+ (Level 3) (Concessions for Novice Driver) | OT | \$7,000 |
| TBA | OT | \$10,000 |
| FFA OPEN (NO CONCESSION CLAIMS) (Level 15) (Concessions for Novice Driver) | G2 | \$50,000 |
| HWOE LT \$40,000 (NO CONCESSION CLAIMS) Not Eligible HWOE LT \$20,000 (Level 9) | G3 | \$30,000 |
| | OT | \$10,000 |
| HWOE LT \$25,000 (CONCESSIONS HWOE LT \$28,000) ALSO ELIGIBLE - HWOE LT \$40,000 With L5\$ LT \$1,500. Preference to HWOE \$12,000+ (Level 7) | OT | \$10,000 |
| FFA OPEN TROTTERS (NO CONCESSION CLAIMS) (Level 9) | OT | \$10,000 |
| FFA OPEN (NO CONCESSION CLAIMS) (LEVEL 15) | G2 | \$50,000 |
| AGE OPEN (NO CONCESSION CLAIMS) (Level 1) | G3 | \$40,000 |
| AGE OPEN (NO CONCESSION CLAIMS) (Level 1) RESTRICTED TO PACERS AGED 4YO & 5YO. FIELD SELECTION DISCRETION APPLIES. | BL | \$25,000 |
| | OT | \$7,000 |
| Colts & Geldings AGE OPEN (NO CONCESSION CLAIMS) (Level 1) Restricted to 2YO COLTS & GELDINGS WHO QUALIFIED IN HEATS | G1 | \$100,000 |
| Fillies & Mares AGE OPEN (NO CONCESSION CLAIMS) (Level 1) Restricted to 2YO FILLIES WHO QUALIFIED IN HEATS | G1 | \$100,000 |
| FFA OPEN (NO CONCESSION CLAIMS) (Level 15) FIELD SELECTION DISCRETION APPLIES. | G2 | \$50,000 |
| TBA | OT | \$10,000 |
| FFA OPEN TROTTERS (NO CONCESSION CLAIMS) (Level 9) | OT | \$10,000 |
| Colts & Geldings AGE OPEN (NO CONCESSION CLAIMS) (Level 1) Restricted to 3YO COLTS & GELDINGS WHO ARE ELIGIBLE UNDER THE CONDITIONS OF THE WA SALES CLASSIC | G2 | \$50,000 |
| Fillies & Mares AGE OPEN (NO CONCESSION CLAIMS) (Level 1) Restricted to 3YO FILLIES WHO ARE ELIGIBLE UNDER THE CONDITIONS OF THE WA SALES CLASSIC | G2 | \$50,000 |
| TBA | OT | \$10,000 |
| HWOE LT \$40,000 (CONCESSIONS HWOE LT \$44,500) ALSO ELIGIBLE - HWOE LT \$70,000 With L5\$ LT \$2,250. Preference to HWOE \$25,000+ (Level 9) (Concessions for Novice Driver, Fillies & Mares) | OT | \$10,000 |
| WOE LT \$25,000 (CONCESSIONS HWOE LT \$28,000) ALSO ELIGIBLE - HWOE LT \$40,000 With L5\$ LT \$1,500. Preference to HWOE \$12,000+ (Level 7) (Concessions for Novice Driver) | OT | \$7,000 |
| AGE OPEN (NO CONCESSION CLAIMS) (Level 1) RESTRICTED TO PACERS AGED 4YO & 5YO. | G2 | \$50,000 |
| AGE OPEN (NO CONCESSION CLAIMS) (Level 1) FIELD SELECTION DISCRETION APPLIES. | BL | \$25,000 |
| Westbred HWOE LT \$25,000 (CONCESSIONS HWOE LT \$28,000) ALSO ELIGIBLE - HWOE LT \$40,000 With L5\$ LT \$1,500. Preference to HWOE \$12,000+ (Level 7) (Concessions for Novice Driver) | OT | \$10,000 |

2019/20 FEATURE RACES

| DATE | DAY | RACING CLUB | FEATURE RACE NAME |
|----------|----------|-------------------|---|
| 15/03/20 | Sunday | Bridgetown | CEDRIC JONES FINAL 3YO+ SS |
| 15/03/20 | Sunday | Bridgetown | GENERIC RWWA FEATURE |
| 20/03/20 | Friday | Gloucester Park | WESTERN GATEWAY 3YO MS |
| 20/03/20 | Friday | Gloucester Park | WESTERN CROWN FINALS 2YO COLTS & GELDINGS |
| 20/03/20 | Friday | Gloucester Park | WESTERN CROWN FINALS 2YO FILLIES |
| 21/03/20 | Saturday | Narrogin | WA COUNTRY DERBY MS |
| 22/03/20 | Sunday | Collie | COLLIE CUP SS |
| 22/03/20 | Sunday | Collie | GEORGE ASHCROFT MEMORIAL MS |
| 23/03/20 | Monday | Pinjarra | GOLDEN GIRLS MILE MS |
| 27/03/20 | Friday | Gloucester Park | EMPRESS STAKES MS |
| 27/03/20 | Friday | Gloucester Park | THE CLARKE MS |
| 27/03/20 | Friday | Gloucester Park | TROTTERS SPRINT SS |
| 28/03/20 | Saturday | Narrogin | GENERIC RWWA FEATURE |
| 28/03/20 | Saturday | Narrogin | GENERIC RWWA FEATURE |
| 28/03/20 | Saturday | Narrogin | NARROGIN CUP |
| 3/04/20 | Friday | Wagin | WAGIN CUP |
| 3/04/20 | Friday | Wagin | GENERIC RWWA FEATURE |
| 3/04/20 | Friday | Wagin | GENERIC RWWA FEATURE |
| 3/04/20 | Friday | Gloucester Park | WA DERBY 3YO MS |
| 5/04/20 | Sunday | Central Wheatbelt | KELLERBERRIN CUP |
| 9/04/20 | Thursday | Gloucester Park | EASTER CUP |
| 10/04/20 | Friday | Pinjarra | GOOD FRIDAY |
| 11/04/20 | Saturday | Northam Harness | GENERIC RWWA FEATURE |
| 18/04/20 | Saturday | Bunbury | DIGGERS CUP 3YO+ MS |

| RACE CONDITIONS | GROUP TYPE | FEATURE STAKES |
|--|------------|----------------|
| HWOE \$0+ SS (NO CONCESSION CLAIMS) CLUB FEATURE | OT | \$7,000 |
| TBA | OT | \$7,000 |
| AGE OPEN (NO CONCESSION CLAIMS) (Level 1) | G2 | \$50,000 |
| Colts & Geldings AGE OPEN (NO CONCESSION CLAIMS) (Level 1). RESTRICTED TO 10 RUNNERS | BL | \$25,000 |
| Fillies AGE OPEN (NO CONCESSION CLAIMS) (Level 1) RESTRICTED TO 10 RUNNERS | BL | \$25,000 |
| Westbred AGE OPEN (NO CONCESSION CLAIMS) (Level 1) RESTRICTED TO WESTBRED 3YOS TRAINED 50KMS+ FROM THE PERTH CBD. RESTRICTED TO DRIVERS RESIDING 50KMS+ FROM THE PERTH CBD. THE WINNER OF THIS RACE WILL BE EXEMPT FROM THE BALLOT FOR THE WA DERBY. | G3 | \$30,000 |
| HWOE \$6,000+ HANDICAP STAND Not Eligible HWOE \$150,000+ (CONCESSIONS CLAIMS ELIGIBLE) Preference to HWOE \$6,000+ (Level 5) (Concessions for Novice Driver) | OT | \$10,000 |
| HWOE LT \$6,000 (NO CONCESSION CLAIMS) Preference to HWOE \$3,000+ (Level 3) | OT | \$7,000 |
| Fillies & Mares FFA OPEN (NO CONCESSION CLAIMS) (Level 13) | G3 | \$30,000 |
| Fillies & Mares FFA OPEN (NO CONCESSION CLAIMS) (Level 13) | G2 | \$50,000 |
| HWOE LT \$70,000 (NO CONCESSION CLAIMS) Preference to HWOE \$40,000+ Not Eligible HWOE LT \$20,000 (Level 11) | G3 | \$30,000 |
| FFA OPEN TROTTERS (NO CONCESSION CLAIMS) (Level 9) | G2 | \$30,000 |
| TBA | OT | \$10,000 |
| TBA | OT | \$10,000 |
| FFA OPEN (NO CONCESSION CLAIMS) (Level 15) FIELD SELECTION DISCRETION APPLIES. | G3 | \$30,000 |
| Westbred HWOE LT \$25,000 (CONCESSIONS HWOE LT \$28,000) ALSO ELIGIBLE - HWOE LT \$40,000 With L5\$ LT \$1,500. Preference to HWOE \$12,000+ (Level 7) (Concessions for Novice Driver) | OT | \$10,000 |
| TBA | OT | \$7,000 |
| TBA | OT | \$7,000 |
| AGE OPEN (NO CONCESSION CLAIMS)(LEVEL 1) | G1 | \$200,000 |
| HWOE LT \$25,000 (CONCESSIONS HWOE LT \$28,000) ALSO ELIGIBLE - HWOE LT \$40,000 With L5\$ LT \$1,500. Preference to HWOE \$12,000+ (Level 7) (Concessions for Novice Driver,Fillies & Mares) | OT | \$7,000 |
| HWOE \$20,000+ HANDICAP STAND NOT ELIGIBLE HWOE LT \$20,000 (CONCESSIONS CLAIMS ELIGIBLE) (Level 9) (Concessions for Novice Driver,Fillies & Mares) | G2 | \$50,000 |
| TBA | OT | \$10,000 |
| HWOE LT \$40,000 (CONCESSIONS HWOE LT \$46,500) ALSO ELIGIBLE - HWOE LT \$70,000 With L5\$ LT \$2,250. Preference to HWOE \$25,000+ (Level 9) (Concessions for Novice Driver,Fillies & Mares) | OT | \$10,000 |

2019/20 FEATURE RACES

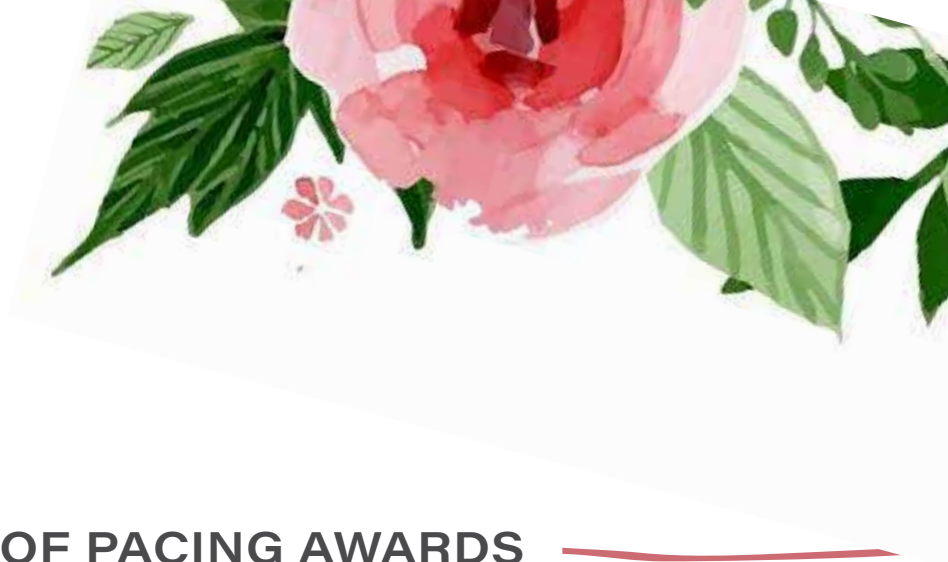
| DATE | DAY | RACING CLUB | FEATURE RACE NAME |
|----------|----------|-------------------|--|
| 18/04/20 | Saturday | Bunbury | COUNTRY OAKS |
| 19/04/20 | Sunday | Central Wheatbelt | CUNDERDIN CUP SS |
| 19/04/20 | Sunday | Central Wheatbelt | JOCK COLEMAN MEMORIAL DAINITYS DAUGHTER |
| 24/04/20 | Friday | Gloucester Park | MEMORIAL DAY MS |
| 24/04/20 | Friday | Gloucester Park | CHAMPAGNE CLASSIC 2YO MS |
| 24/04/20 | Friday | Gloucester Park | THE JOHNSON FILLIES & MARES MS |
| 26/04/20 | Sunday | Central Wheatbelt | GENERIC RWWA FEATURE |
| 26/04/20 | Sunday | Central Wheatbelt | GENERIC RWWA FEATURE |
| 26/04/20 | Sunday | Central Wheatbelt | CENTRAL WHEATBELT CUP 3YO+ MS |
| 27/04/20 | Monday | Pinjarra | KING LETHBRIDGE MEMORIAL MS |
| 1/05/20 | Friday | Gloucester Park | LAURIE KENNEDY RACE FOR ROSES FILLIES & MARES MS |
| 1/05/20 | Friday | Gloucester Park | WA OAKS 3YO FILLIES MS |
| 2/05/20 | Saturday | Bunbury | DE CAMPO MEMORIAL 2YO COLTS & GELDINGS MS |
| 2/05/20 | Saturday | Bunbury | DE CAMPO MEMORIAL 2YO FILLIES MS |
| 8/05/20 | Friday | Gloucester Park | BREEDERS STAKES FILLIES AND MARES MS |
| 9/05/20 | Saturday | Bunbury | BUNBURY DASH FOR CASH |
| 15/05/20 | Friday | Gloucester Park | 3YO PEARL CLASSIC MS COLTS & GELDINGS MS |
| 16/05/20 | Saturday | Narrogin | GENERIC RWWA FEATURE |
| 17/05/20 | Sunday | Central Wheatbelt | S M ELLIOTT MEMORIAL 3YO MS |
| 22/05/20 | Friday | Gloucester Park | MEMBERS SPRINT MS |
| 22/05/20 | Friday | Gloucester Park | 3YO DIAMOND CLASSIC FILLIES MS |
| 22/05/20 | Friday | Gloucester Park | PURE STEEL MS |
| 29/05/20 | Friday | Gloucester Park | 2YO DIAMOND CLASSIC FINAL MS |
| 5/06/20 | Friday | Gloucester Park | ROTARY CLUB FREMANTLE MS |
| 5/06/20 | Friday | Gloucester Park | WESTBRED 4YO & 5YO MARES MS |
| 12/06/20 | Friday | Gloucester Park | 2YO PEARL CLASSIC FINAL MS |
| 12/06/20 | Friday | Gloucester Park | WESTSIRED 3YO COLTS & GELDINGS MS |

| RACE CONDITIONS | GROUP TYPE | FEATURE STAKES |
|---|------------|----------------|
| "Westbred Fillies 3YO OPEN (NO CONCESSION CLAIMS) (Level 7) RESTRICTED TO WESTBRED 3YO FILLIES THAT ARE TRAINED IN EXCESS OF 60KM FROM THE PERTH CBD. THE WINNER OF THIS RACE WILL BE EXEMPT FROM THE BALLOT FOR THE WA OAKS GPM 1-5-20. PRESENTATION OF TROPHY, RUG & GARLAND AFTER RACE." | BL | \$25,000 |
| HWOE \$6,000+ HANDICAP STAND (CONCESSIONS CLAIMS ELIGIBLE) Preference to HWOE \$6,000+ (Level 4) (Concessions for Novice Driver, Fillies & Mares) | OT | \$7,000 |
| Fillies & Mares NE HWOE \$12,000+ (NO CONCESSION CLAIMS) (Level 5) | OT | \$7,000 |
| FFA OPEN (NO CONCESSION CLAIMS) (Level 15) | BL | \$25,000 |
| AGE OPEN (NO CONCESSION CLAIMS) (Level 7) | G2 | \$50,000 |
| "Fillies & Mares HWOE LT \$70,000 (CONCESSIONS HWOE LT \$85,000) Not Eligible HWOE LT \$20,000 Preference to HWOE \$40,000+ (Level 11) (Concessions for Novice Driver)" | G3 | \$30,000 |
| TBA | OT | \$7,000 |
| TBA | OT | \$7,000 |
| HWOE LT \$40,000 (CONCESSIONS HWOE LT \$43,000) Preference to HWOE \$25,000+ (Level 9) | OT | \$10,000 |
| Westbred Mares NE HWOE \$25,000+ (NO CONCESSION CLAIMS) (Level 7) | OT | \$14,000 |
| Fillies & Mares HWOE \$20,000+ HANDICAP STAND NOT ELIGIBLE HWOE LT \$20,000 (CONCESSIONS CLAIMS ELIGIBLE) (Level 9) (Concessions for Novice Driver) | BL | \$25,000 |
| Fillies 3YO OPEN (NO CONCESSION CLAIMS) (Level 11) | G1 | \$150,000 |
| Colts 7 Geldings 2YO OPEN (NO CONCESSION CLAIMS) (Level 5) | OT | \$10,000 |
| Fillies 2YO OPEN (NO CONCESSION CLAIMS) (Level 5) | OT | \$10,000 |
| Fillies & Mares FFA OPEN (NO CONCESSION CLAIMS) (Level 13) | G2 | \$50,000 |
| HWOE LT \$40,000 (CONCESSIONS HWOE LT \$46,500) ALSO ELIGIBLE - HWOE LT \$70,000 With L5\$ LT \$2,250. Preference to HWOE \$25,000+ (Level 9) (Concessions for Novice Driver, Fillies & Mares) | OT | \$10,000 |
| Colts & Geldings 3YO OPEN (NO CONCESSION CLAIMS) (Level 9) For Colts & Geldings which qualify in the Heats | G2 | \$50,000 |
| TBA | OT | \$10,000 |
| 3YO OPEN (NO CONCESSION CLAIMS) (Level 7) | OT | \$7,000 |
| FFA OPEN (NO CONCESSION CLAIMS) (Level 15) | BL | \$25,000 |
| Fillies 3YO OPEN (NO CONCESSION CLAIMS) (Level 9) For Fillies which qualify in Heats | G2 | \$50,000 |
| HWOE LT \$40,000 (NO CONCESSION CLAIMS) Not Eligible HWOE LT \$20,000 (Level 9) | G3 | \$30,000 |
| Fillies 2YO OPEN (NO CONCESSION CLAIMS) (Level 9) Restricted to 2yos that qualify in heats | G1 | \$100,000 |
| FFA OPEN (NO CONCESSION CLAIMS) (Level 15) | BL | \$25,000 |
| SPECIAL CONDITIONS (NO CONCESSION CLAIMS) (Level 9) RESTRICTED TO 4YO & 5YO MARES THAT HAVE NOT WON A RACE WITH RACE STAKES GREATER THAN \$25,000. | G3 | \$30,000 |
| Colts & Geldings 2YO OPEN (NO CONCESSION CLAIMS) (Level 9) Restricted to 2yos that qualify in heats | G1 | \$100,000 |
| WestSired Colts & Geldings 3YO OPEN (NO CONCESSION CLAIMS) (Level 7) | BL | \$25,000 |

2019/20 FEATURE RACES

| DATE | DAY | RACING CLUB | FEATURE RACE NAME |
|----------|----------|-----------------|--|
| 12/06/20 | Friday | Gloucester Park | WESTSIRED 3YO FILLIES & MARES MS |
| 13/06/20 | Saturday | Narrogin | GENERIC RWWA FEATURE |
| 19/06/20 | Friday | Gloucester Park | WINTER CUP MS |
| 19/06/20 | Friday | Gloucester Park | WESTSIRED 2YO COLTS & GELDINGS MS |
| 19/06/20 | Friday | Gloucester Park | WESTSIRED 2YO FILLIES & MARES MS |
| 19/06/20 | Friday | Gloucester Park | 3YO COLTS AND GELDINGS WESTBRED MS |
| 19/06/20 | Friday | Gloucester Park | 3YO FILLIES WESTBRED MS |
| 26/06/20 | Friday | Gloucester Park | PAST PRESIDENTS CUP MS |
| 26/06/20 | Friday | Gloucester Park | 2YO COLTS AND GELDINGS WESTBRED CLASSIC MS |
| 26/06/20 | Friday | Gloucester Park | 2YO FILLIES WESTBRED CLASSIC MS |
| 26/06/20 | Friday | Gloucester Park | THE LOMBARDO MS |
| 3/07/20 | Friday | Gloucester Park | 2YO FILLIES GOLD BRACELET MS |
| 4/07/20 | Saturday | Northam Harness | GENERIC RWWA FEATURE |
| 10/07/20 | Friday | Gloucester Park | 2YO GOLDEN SLIPPER |
| 13/07/20 | Monday | Pinjarra | DAINTYS DAUGHTER CLASSIC |
| 17/07/20 | Friday | Gloucester Park | BOTRA CUP SS |
| 17/07/20 | Friday | Gloucester Park | APG 2YO CHAMPIONSHIP MS |
| 24/07/20 | Friday | Gloucester Park | JOHN HIGGINS MEMORIAL FINAL MS |
| 24/07/20 | Friday | Gloucester Park | CHANDON 3YO+ MS |
| 31/07/20 | Friday | Gloucester Park | THE KERRY CLARKE 4 & 5YO CLASSIC MS |
| 1/08/20 | Saturday | Northam Harness | VIRGIL QUEEN CELEBRATION 4YO+ WESTBRED MARES |
| 1/08/20 | Saturday | Northam Harness | NORTH EASTERN DISTRICTS COUNCIL DERBY 3YO MS |
| 7/08/20 | Friday | Gloucester Park | SAN SIMEON MS |
| 7/08/20 | Friday | Gloucester Park | MARATHON HANDICAP SS |
| 14/08/20 | Friday | Gloucester Park | AUGUST CUP MS |
| 14/08/20 | Friday | Gloucester Park | WASBA 4 & 5YO MARES MS |
| 21/08/20 | Friday | Gloucester Park | THE BINSHAW MS |
| 28/08/20 | Friday | Gloucester Park | THE SCHRADER FILLIES & MARES MS |

| RACE CONDITIONS | GROUP TYPE | FEATURE STAKES |
|---|------------|----------------|
| WestSired Fillies 3YO OPEN (NO CONCESSION CLAIMS) (Level 7) | BL | \$25,000 |
| TBA | OT | \$10,000 |
| FFA OPEN (NO CONCESSION CLAIMS) (Level 15) | BL | \$25,000 |
| WestSired Colts & Geldings 2YO OPEN (NO CONCESSION CLAIMS) (Level 5) | BL | \$25,000 |
| WestSired Fillies 2YO OPEN (NO CONCESSION CLAIMS) (Level 5) | BL | \$25,000 |
| Westbred Colts & Geldings 3YO OPEN (NO CONCESSION CLAIMS) (Level 11) | G1 | \$100,000 |
| Westbred Fillies 3YO OPEN (NO CONCESSION CLAIMS) (Level 11) | G1 | \$100,000 |
| FFA OPEN (NO CONCESSION CLAIMS) (Level 15) | BL | \$25,000 |
| Westbred Colts & Geldings 2YO OPEN (NO CONCESSION CLAIMS) (Level 9) The winner of this race will be exempt from the ballot for the Golden Slipper at Gloucester Park on 10 July 2020. | G1 | \$100,000 |
| Westbred Fillies 2YO OPEN (NO CONCESSION CLAIMS) (Level 9) The winner of this race will be exempt from the ballot for the Golden Slipper at Gloucester Park on 10 July 2020. | G1 | \$100,000 |
| Fillies & Mares HWOE LT \$40,000 (NO CONCESSION CLAIMS) Not Eligible HWOE LT \$20,000 (Level 9) | G3 | \$30,000 |
| Fillies 2YO OPEN (NO CONCESSION CLAIMS) (Level 5) The winner of this race will be exempt from the ballot for the Golden Slipper at Gloucester Park on 10 July 2020. | G3 | \$30,000 |
| TBA | OT | \$10,000 |
| 2YO OPEN (NO CONCESSION CLAIMS) (Level 9) | G1 | \$125,000 |
| Fillies 3YO OPEN (NO CONCESSION CLAIMS) (Level 7) | G3 | \$30,000 |
| HWOE \$20,000+ HANDICAP STAND NOT ELIGIBLE HWOE LT \$20,000 (CONCESSIONS CLAIMS ELIGIBLE) (Level 9) (Concessions for Novice Driver, Fillies & Mares) | BL | \$25,000 |
| 2YO GROUP 2 OPEN (NO CONCESSION CLAIMS) (Level 7) Restricted to APG eligible horses which did not compete in the APG National Final. | G2 | \$50,000 |
| HWOE LT \$40,000 (NO CONCESSION CLAIMS) Preference to HWOE \$20,000+ GROUP 3 \$30,000 RESTRICTED TO HORSES THAT QUALIFY IN THE HEATS | G3 | \$30,000 |
| HWOE LT \$70,000 (NO CONCESSION CLAIMS) Preference to HWOE \$40,000+ Not Eligible HWOE LT \$20,000 (Level 11) | G3 | \$30,000 |
| Westbred SPECIAL CONDITIONS (NO CONCESSION CLAIMS) (Level 9) RESTRICTED TO 4YO & 5YO's THAT HAVE NOT WON A RACE WITH RACE STAKES GREATER THAN \$25,000. | G3 | \$30,000 |
| Westbred Mares NE HWOE \$25,000+ (NO CONCESSION CLAIMS) (Level 7) | OT | \$20,000 |
| Westbred 3YO OPEN (NO CONCESSION CLAIMS) (Level 7) RESTRICTED TO WESTBRED 3YOS TRAINED IN EXCESS OF 50KMS FROM THE PERTH CBD WITH PREFERENCE IN FIELD SELECTION TO PACERS TRAINED IN THE NORTH EASTERN DISTRICTS COUNCIL AREA.. RESTRICTED TO DRIVERS RESIDING IN EXCESS OF 50KMS FROM THE PERTH CBD. | OT | \$10,000 |
| HWOE LT \$40,000 (NO CONCESSION CLAIMS) Not Eligible HWOE LT \$20,000 (Level 9) | G2 | \$50,000 |
| HWOE \$20,000+ HANDICAP STAND NOT ELIGIBLE HWOE LT \$20,000 (CONCESSIONS CLAIMS ELIGIBLE) (Level 9) | BL | \$25,000 |
| FFA OPEN (NO CONCESSION CLAIMS) (Level 15) | BL | \$25,000 |
| Mares SPECIAL CONDITIONS (NO CONCESSION CLAIMS) (Level 9) RESTRICTED TO 4YO & 5YO MARES THAT HAVE NOT WON A RACE WITH RACE STAKES GREATER THAN \$25,000. | G3 | \$30,000 |
| HWOE LT \$70,000 (NO CONCESSION CLAIMS) Preference to HWOE \$40,000+ Not Eligible HWOE LT \$20,000 (Level 11) | G2 | \$50,000 |
| Fillies & Mares HWOE LT \$70,000 (NO CONCESSION CLAIMS) Preference to HWOE \$40,000+ Not Eligible HWOE LT \$20,000 (Level 11) | G3 | \$30,000 |



LADIES OF PACING AWARDS

Ladies Luncheon

CELEBRATING THE LADIES IN THE WA HARNESS INDUSTRY AT THE
STUNNING GOODWOOD RESTAURANT, OPTUS STADIUM.

THURS 16 JAN 2020

OPTUS STADIUM, BURSWOOD WA

ARRIVAL 12PM - FINISH 3.30PM

DRESS CODE: SMART CASUAL

**TICKETS ARE AVAILABLE TO BE PURCHASED
AT \$150 PER PERSON. CONTACT RWWA ON 08 9445 5333**



RACING AND WAGERING WESTERN AUSTRALIA

RACING POLICIES & GENERAL RACING INFORMATION

Contents

| | |
|---|----|
| EMERGENCY RUNNERS..... | 3 |
| RACE CONDITIONS..... | 3 |
| BARRIER DRAWS..... | 4 |
| WESTERN AUSTRALIAN HANDICAPPING RULES | 6 |
| NOMINATIONS/ACCEPTANCES..... | 7 |
| DUAL RACE MEETING NOMINATIONS | 8 |
| HORSE OMITTED FROM HANDICAPS OR DRAW/REDRAW FOR BARRIER POSITIONS | 8 |
| SCRATCHINGS | 9 |
| HEATS/FINALS..... | 9 |
| MARES ALLOWANCE..... | 11 |
| STAKEMONEY DISTRIBUTION | 11 |
| OFFICIAL TRIALS..... | 12 |
| ALLOCATION OF FIELD SELECTION POINTS..... | 14 |
| FIELD SELECTION..... | 15 |
| DELETION OF RACES | 17 |
| DIVISION OF RACES..... | 17 |
| PRE-PURCHASE HORSE ASSESSMENT & STEWARDS STATUS CHECK..... | 21 |
| RACE MEETING PROGRAMMING..... | 21 |
| FIELD SIZE AND NUMBER OF RUNNERS ON A LINE | 21 |
| DRAW FOR BARRIER POSITIONS | 23 |
| BARRIER POSITIONS AFTER SCRATCHING | 23 |
| COLOURS | 23 |
| COUNTRY COUNCIL DERBY, COUNTRY DERBY AND COUNTRY OAKS | 24 |
| POSTPONED MEETINGS | 25 |
| DRIVER AND GEAR CHANGES | 25 |
| RELINQUISHMENT OF THE TRAINING OF A HORSE | 25 |
| NOTIFICATION OF GELDING OF A HORSE | 25 |
| WESTBRED BREEDING BONUS CONDITIONS | 26 |

RACING POLICIES AND GENERAL RACING INFORMATION

EMERGENCY RUNNERS

(Revised 14 March, 2019. Policy to be effective 14 March, 2019)

1. The Handicapper may declare a horse to be an emergency in any race programmed with a Random Barrier Draw.
2. There can be no emergency runners for any race programmed with a Preferential Barrier Draw.
3. A horse declared an emergency in a standing start race will be included in the draw for barrier positions.
4. Except as provided in clause 5 below, where a horse is declared an emergency in a mobile start race it will be allocated the outside barrier position provided it shall take the position of the first scratched horse and retain its allocated barrier number.
5. A horse which is excluded from the draw in a mobile start race may be declared an emergency provided that if it gains a start it shall start from the outside of the line on which the scratching occurs and it will retain its allocated barrier number. An emergency shall not be declared in a mobile race at a track with equal numbers of starters on each line.
6. A horse declared an emergency shall be required to take its place in the field where a scratching occurs prior to 8:30 am on the day of the race.
7. A horse declared an emergency will be withdrawn automatically without penalty at 8:30 am on the day of the race if it is not required.
8. The trainer of a horse declared an emergency may contact Harness Trainers Service Centre (or the Stewards if the meeting is conducted on a weekend or public holiday) at 8:30 am on the day of the race to ascertain the horse gained a start.

RACE CONDITIONS

1. Race conditions will include the following detail;
 - a) Starting method.
 - b) Stake.
 - c) Race distance.
 - d) Description of eligible horses which includes but is not limited to age, and HWOE level.
 - e) Conditions for the draw for barrier positions.
 - f) Conditions applicable to handicapping.
 - g) A race may carry a condition which stipulates the conditions in which a horse with a higher classification may be eligible for the race. Such condition will be known as an “also eligible” condition.
 - h) In a race of any class, the term ‘Mares’ shall refer to and include Mares and Fillies and the term ‘Entires and Geldings’ shall refer to and include Colts, Entires, Rigs and Geldings
 - i) The eligibility of a horse entered into a race shall be determined as at the time acceptances close for such race. Following that time a horse which is listed as a starter will remain eligible for the race irrespective of any subsequent performance and will retain the same handicap mark or barrier position (unless excluded from the draw) except that a Maiden winning a race will be ineligible to start in a Maiden.

NOTE: RWWA has the utmost power to deal with any matter arising, whether or not such matter is specifically covered in the conditions of a race. Any decision by RWWA shall be final and conclusive and binding on all parties

BARRIER DRAWS

(Revised 12 March, 2019. Policy to be effective 12 March, 2019)

Barrier draws will be conducted as Random Barrier Draws (RBD) or Preferential Barrier Draws (PBD) and the mix of draws will be determined through the programming process.

Selected races, i.e. FFA PACERS, FFA TROTTERS, FFA MARES, RESTRICTED AGE and OPEN AGE, may utilise a Preferential Draw on an alternating basis with a Random Barrier Draw.

There will be two types of Preferential Draws:

1. GPPBD/HWOE

A Grouped Preferential Barrier Draw will draw horses in order of their HWOE Groups/Levels. (Refer Table 1)

- a) Horses in the same Level/HWOE Groups will be subject to a Random Draw within the Level/Group.
- b) Level 15+/HWOE \$100,000+ shall be drawn together in ascending groups of \$50,000. (Refer Table 2)
- c) **An exception will be applied to Fillies & Mares FFA only races which will see mares in the same Level/HWOE Groups subject to a RBD within their Level/Group.**
- d) **If a race has a "Preference to" clause in the conditions then the preference level will determine the lowest HWOE group applicable for the race.**
- e) **If a race does not have a "Preference to" clause in the conditions then horses in the same Level/HWOE Groups will be subject to a Random Draw within the Level/Group.**
- f) Horses nominating out of their group will be drawn together with the lowest group.
- g) Where the conditions of a race include a preferential barrier draw on HWOEL2 then horses on the same value will be subject to a random barrier draw within their values. All other horses will be allocated a barrier sequentially based on their HWOEL2
- h) Horses using a concession will be drawn in their original group not a reduced group using the concession value.
- i) Standing start races will have 10-metre handicapping increments

| TABLE 1 - Level 1 to 13 | | |
|-------------------------|-------------------|--------------|
| Level | HWOE \$ | HWOE Group |
| 15 | \$100,000+ | FFA |
| 14 | NA | |
| 13 | \$85,000-\$99,999 | LT \$100,000 |
| 12 | \$70,000-\$84,999 | LT \$85,000 |
| 11 | \$55,000-\$69,999 | LT \$70,000 |
| 10 | \$40,000-\$54,999 | LT \$55,000 |
| 9 | \$32,500-\$39,999 | LT \$40,000 |
| 8 | \$25,000-\$32,499 | LT \$32,500 |
| 7 | \$18,500-\$24,999 | LT \$25,000 |
| 6 | \$12,000-\$18,499 | LT \$18,500 |
| 5 | \$9,000-\$11,999 | LT \$12,000 |
| 4 | \$6000-\$8,999 | LT \$9,000 |
| 3 | \$3000-\$5999 | LT \$6,000 |
| 2 | \$1-\$2999 | LT \$3,000 |
| 1 | \$ 0 | MAIDEN |

| TABLE 2 - FFA | | |
|---------------|-----------------------|--------------|
| Level | HWOE \$ | HWOE Group |
| 15 | \$100,000 - \$149,999 | LT \$150,000 |
| | \$150,000 - \$199,999 | LT \$200,000 |
| | \$200,000 - \$249,999 | LT \$250,000 |
| | \$250,000 - \$299,999 | LT \$300,000 |
| | \$300,000 - \$349,999 | LT \$350,000 |
| | \$350,000 - \$399,999 | LT \$400,000 |
| | \$400,000 - \$449,999 | LT \$450,000 |
| | \$450,000 - \$499,999 | LT \$500,000 |
| | \$500,000 - \$549,999 | LT \$550,000 |
| | \$550,000 - \$599,999 | LT \$600,000 |
| | \$600,000 - \$649,999 | LT \$650,000 |
| | \$650,000 - \$699,999 | LT \$700,000 |

2. PBD/HWOEL2

This is a STRAIGHT sequential Preferential Barrier Draw on HWOE/L2.

Horses with the same HWOE value will be subject to a Random Draw within their values.
The rest are straight sequential using HWOE.

WESTERN AUSTRALIAN HANDICAPPING RULES

Western Australia has introduced a conditioned handicapping system which will group horses together for the purpose of handicapping based on the stakes they have earned for WINNING races (HWOE).

- Each time a horse WINS a race the dollar value paid for first is accumulated towards the horses HWOE (Win Only Earnings)
- Place money and payments back to last do NOT get counted in this calculation and Westbred and other Bonuses are also not included.
- The formula for the calculation of HWOE for 2YO, 3YO and 4YO are detailed below:
 - 2yo wins in races less than \$100,000 then 25% of win stake to be considered towards the handicap win only earnings to a maximum of \$3,750 per race
 - 2yo wins in races \$100,000+ then 25% of win stake to be considered towards the handicap win only earnings to a maximum of \$7,500 per race
 - 3yo wins in races less than \$100,000 then 75% of win stake to be considered towards the handicap win only earnings to a maximum of \$11,250 per race
 - 3yo wins in races \$100,000+ then 75% of win stake to be considered towards the handicap win only earnings to a maximum of \$22,500 per race
 - 4yo+ wins in races less than \$100,000 then 100% of win stake to be considered towards the handicap win only earnings to a maximum of \$15,000 per race
 - 4yo+ wins in races \$100,000+ then 100% of win stake to be considered towards the handicap win only earnings to a maximum of \$30,000 per race

Determination of HWOE – Transition from previous system

While the following formula/methodology has been used to transition horses previously – **AS FROM 1st September 2019 all overseas horses will be assessed as if all their wins had been under the HWOE system.**

| M - C | M - C | M - C | M - C | M - C | M - C | M - C | New Class – lowest of maximum or H\$WOE conversion |
|-------------|----------|----------|-------|-------|-------|-------|--|
| Non winners | | | | | | | H\$WOE \$0 |
| M0 - C0 | | | | | | | H\$WOE \$12,500 maximum |
| M0 - C1 | | | | | | | H\$WOE \$17,500 maximum |
| M0 - C2 | | | | | | | H\$WOE \$22,500 maximum |
| | M1 - C1 | | | | | | H\$WOE \$25,000 maximum |
| M0 - C3 | | | | | | | H\$WOE \$27,500 maximum |
| | M1 - C2 | | | | | | H\$WOE \$30,000 maximum |
| M0 - C4 | | | | | | | H\$WOE \$32,500 maximum |
| | M1 - C3 | | | | | | H\$WOE \$35,000 maximum |
| M0 - C5+ | | | | | | | H\$WOE \$37,500 maximum |
| | M1 - C4 | | | | | | H\$WOE \$40,000 maximum |
| | M1 - C5 | | | | | | H\$WOE \$45,000 maximum |
| | M1 - C6+ | | | | | | H\$WOE \$50,000 maximum |
| | | M2 - C5 | | | | | H\$WOE \$52,500 maximum |
| | | M2 - C6+ | | | | | H\$WOE \$57,500 maximum |
| | | | M3 | | | | H\$WOE \$75,000 maximum |
| | | | | M4 | | | H\$WOE \$95,000 maximum |
| | | | | | M5 | | H\$WOE \$115,000 maximum |
| | | | | | | M6+ | H\$WOE |

NOMINATIONS/ACCEPTANCES

1. A Stable Return, with all sections completed, must be lodged via HarnessWeb or in writing direct with Racing and Wagering Western Australia (RWAA) immediately when a horse comes under the control of a trainer with the intention of preparing the horse to participate in racing.
2. Any trainer relinquishing the training of a horse shall notify RWAA in writing, or via HarnessWeb, immediately upon the horse leaving his/her care.
3. A horse must be nominated by:
 - a. HarnessWeb <https://harnessweb.harness.org.au>
 - b. Using the 24 hour Telephone Nomination Service – (08) 9445 5268
4. All nominations close with Racing and Wagering Western Australia only.
5. Trainers who nominate by HarnessWeb are reminded that they should always check any nominations lodged by checking 'MY NOMS' from the navigation menu. This will display all current nominations and engagements and provide the opportunity to rectify any problems or errors.
6. Nominating race preferences – In both nomination methods, where a horse is nominated for more than one race code the race code order in which it is nominated shall be deemed to be the trainer's order of race preference.
7. Preferences may be changed after publication of nominations and before 8.30 am on Acceptance Day by contacting Harness Racing Services on 9445 5267.
8. Unless otherwise specified in the conditions of a race or a race-meeting, the following nomination deadlines apply to all race meetings;

| Meeting Day | Nomination Closing Time | | Withdrawal Deadline | | Acceptance Time | |
|------------------|-------------------------|-----------|---------------------|-----------|-----------------|-----------|
| Monday | 8:00 am | Wednesday | 8:30 am | Thursday | 8:30 am | Thursday |
| Tuesday | 8:00 am | Wednesday | 8:30 am | Thursday | 8:30 am | Thursday |
| Wednesday | 8:00 am | Friday | 8:30 am | Monday | 8:30 am | Monday |
| Thursday | 8:00 am | Friday | 8:30 am | Monday | 8:30 am | Monday |
| Friday | 8:00 am | Monday | 8:30 am | Tuesday | 8:30 am | Tuesday |
| Saturday | 8:00 am | Tuesday | 8:30 am | Wednesday | 8:30 am | Wednesday |
| Sunday | 8:00 am | Tuesday | 8:30 am | Wednesday | 8:30 am | Wednesday |

9. There is no limit on the number of meetings or races for which a horse may be nominated.
10. A horse may be nominated for a mobile or standing start race programmed for horses with a higher classification than the horse's classification at the time of nomination, subject to the race conditions allowing such Out Of Class nomination
11. A horse nominated for a race may be transferred to another race at that meeting or be handicapped behind its automatic handicap with the Trainer's authorization.
12. A horse taken out of a race PRIOR to Acceptance Time shall be deemed to have been WITHDRAWN. Horses taken out of a race AFTER Acceptance Time shall be deemed to have been scratched and may be subject to a scratching penalty.
13. As changes are sometimes made to race programs, trainers should always refer to the online calendar at <http://www.harness.org.au/racing/meeting-calendar/>
14. When nominations for a race are extended, it will be until the advertised Acceptance Time. Preference in field selection will be given to original nominations with late nominations given preference over original nominations which have an unfulfilled engagement.
15. In the event of an extension of nominations past the original Acceptance Time for any race on the programme the horses originally nominated cannot be withdrawn.

16. When nominations have been re-opened for a particular race, any horse that has been withdrawn prior to Acceptance Time, may only be re-nominated on the same handicap mark in a standing start race or under the same HWOE or \$L5 condition in a mobile start race and shall be treated as a late nomination.
17. Nominations for races will be published on HarnessWeb on the day nominations close and on <http://www.harness.org.au/media-room/racing-office/>. Preferences will be displayed.
18. If a horse accepts for two or more races at a meeting, a trainer may notify the RWWA Handicapping Panel of a preference for one race over another, however, such horse may be given a start in the race which allows the field selector to maximise field size.
19. A horse will be ineligible to gain a start in a race if it has already been drawn into a race on the same day, unless otherwise stated in the race conditions.
20. A horse that is engaged as an emergency for the Final of a race may be granted a start in another race on the same day. If there is a scratching from the Final, such horse is required to contest the Final and will be scratched without penalty from the other race. Should such horse scratch from the Final, it will be deemed ineligible for the other race.
21. A horse that is engaged as an emergency in a feature race of higher stake money may be granted a start in a race of lesser stake money at the same meeting. If there is a scratching from the feature race, such horse is required to contest the feature race and will be scratched without penalty from the other race. Should such horse scratch from the feature race, it will be deemed ineligible for the other race.
22. A horse that is declared as an emergency in two or more Heats/divisions of a race or two individual races at the same meeting shall be deemed as a starter in the Heat/division or individual race from which the earliest timed scratching was taken. Such horse shall then be automatically scratched from the other Heat/division or individual race.

DUAL RACE MEETING NOMINATIONS

1. Where a horse is nominated for meetings on consecutive days and where acceptances are on separate days, a trainer not wishing to start the horse at both meetings, shall withdraw the horse prior to final acceptances for the second meeting.
2. Trainers who fail to withdraw such horse prior to Acceptance Time for the second meeting shall incur a 14 day Scratching Penalty if such horse is scratched after Acceptance Time for the second meeting.
3. The Harness Racing Office and Handicapper/s will not assume that a horse gaining a start at its first nominated meeting should automatically be withdrawn for the second nominated meeting.

HORSE OMITTED FROM HANDICAPS OR DRAW/REDRAW FOR BARRIER POSITIONS

1. If, after the declaration of acceptances for a race, it is the opinion of the Manager Harness Racing that an error or omission caused a horse properly nominated for the race to be omitted from the handicaps and/or not correctly included in the draw for barrier position, the horse may be included in the handicaps and/or draw for barrier positions under the provisions of this regulation.
2. A horse included in the handicaps under the provision of sub-reg. (1) shall be considered by the handicapper in accordance with the field selection criteria set down by RWWA.
3. Allocation of barrier position to the horse included in the race and/or the draw for barrier positions under the provision of sub-reg. (1) shall be in accordance with the conditions of the race for which the horse is declared an acceptor.
4. In the event of a horse included in a race under the provisions of sub-reg. (1) causing a horse already declared as an acceptor for the race to be balloted the following will apply;
 - a) Where the barrier draw condition for the race is preferential the included horse's barrier shall be determined from the total number of barrier positions from which the horse is entitled to start. The barrier of the horse previously drawn in that position and all horses drawn outside the included horse shall move out one barrier position

- b) Where the barrier draw condition for the race is random the included horse's barrier shall be determined by a random draw. The horse previously drawn in that position and all horses drawn outside the included horse shall move out one barrier position.
- 5. The nomination of a horse shall not be considered for inclusion in the handicaps and/or inclusion in the draw for barrier positions under the provisions of sub-reg. (1) after 8.30am on the day following the declaration of acceptances for the race or after the time for the declaration of acceptances for the race has been extended.
- 6. Any person who, in the opinion of the Stewards, attempts to cause, or causes, a horse to be improperly omitted from the handicaps and/or draw for barrier positions commits an offence and may be penalised accordingly.

SCRATCHINGS

1. Any horse, including emergencies, scratched after Acceptance Time (08:30 hrs) and before the day of the race will be stood down for 14 days as per normal Scratching Penalty Policy. This may be reduced to a seven (7) day race ban – if a certificate from a qualified Veterinarian is received which states the reason for the scratching and that the horse is fit to resume at the conclusion of seven (7) days.
2. Horses scratched on the day of the meeting will be automatically stood down from racing for a period of 28 days from the date of the meeting, except that in cases where a veterinary certificate is lodged and accepted by the Stewards within 48 hours* of the meeting, the period of the ban will be a minimum of seven (7) days from the date of the meeting.
3. Final scratchings are taken at 8.30am on the morning of each race meeting. Emergencies will be withdrawn at this time if there have been no scratchings in the race.
4. A horse that is a late scratching due to a float breakdown will be automatically stood down from racing for a period of 28 days from the date of the meeting, except that in cases where a mechanical certificate of repair is lodged and accepted by the Stewards within 48 hours* of the meeting, the ban may be reduced to a minimum of 6 days. If the Stewards are not satisfied that a late scratching due to a float breakdown is legitimate, then the provisions of Rule 88 may be enforced. *Paperwork not lodged within 48 hours for the above penalties may be considered at the discretion of the Stewards for approval or otherwise.
5. If, following the release of fields, a horse is scratched due to a change of ownership, such horse, upon lodgement of the transfer of ownership papers, may have the scratching penalty lifted. A horse that is scratched due to a change of trainer will remain liable to the appropriate scratching penalties, unless such horse has been transferred to an interstate trainer, in which case the scratching penalty may be lifted upon approval from the Stewards.
6. A horse which is a starter in a stand start race and is re-handicapped following a performance in another race may scratch without penalty by contacting the RWWA Handicapping Panel prior to 8.30am on race morning.
7. A horse drawn as an emergency for a Metro race and subsequently drawn as a starter in a Career race at another meeting may be scratched by connections without penalty from the Career race provided there has been a scratching from the Metro race and application is made to the Racing Office.

HEATS/FINALS

1. A race may be conducted as Heats and a Final (series) and may have a Consolation/s in conjunction therewith provided that:
2. A horse may become ineligible for any further Heat, Final or Consolation of the series if it is reclassified beyond the published conditions of the race for performances in races other than within the series.
3. Horses may contest more than one Heat, unless otherwise stated in the race conditions.
4. Preference in the selection of fields will be given to horses that have contested the least number of Heats.
5. For the purpose of selection of fields, a horse that is disqualified from a Heat will be treated as having been a starter in such Heat.
6. Horses selected in the Heats are deemed to be final acceptors in all rounds of Heats (if applicable) and the Final and will be liable for any penalties if scratched.

7. Horses will qualify for the Final based on finishing position and mile rate recorded in the Heats.
8. Preference in qualification for a Final will be given to horses which completed the course in their Heat.
9. A horse that is disqualified from a Heat will be ineligible to contest the Final.
10. If any qualified horse is unable to take its place in the Final (or subsequent race of the series), the next highest ranked horse based on finishing position and mile rate will be declared the qualifier.
11. It is the responsibility of the trainer to ascertain whether or not such horse has qualified for the Final.
12. Horses which qualify for a Final will not be permitted to start in any other race on the day the Final is scheduled
13. Fields for Consolation races will be selected on finishing order and mile rate in the Heats.
14. The type of barrier draw applied to the Heats will also apply to the Final, unless otherwise approved by RWWA.
15. Where a horse contests a Heat and qualifies for the Final, the driver for the Final may be changed from the driver in the Heat, providing the change is notified by the time prescribed for the notification of drivers.
16. In the event of any Heat being abandoned after the declaration of Acceptances, horses (excluding scratchings) will qualify for the Final in descending order of automatic field selection points for Heats selected under the Automatic Field Selection System-
17. Accordingly, horses (excluding scratchings) will qualify at the discretion of the RWWA Handicapping Panel for Heats selected under the Manual Field Selection System.
18. In the event there are insufficient acceptors to run heats the acceptors will be automatically qualified for the final which will be selected using the Field Selection for Feature Races run without heats.
19. Where a horse contests a heat and qualifies for the final, the trainer of such horse **IS** required to nominate for the Final.
20. The provisions of Rule 195A shall apply, and be read into the conditions of entry, for races run as Heats and Final/Consolation.

CONCESSION DRIVERS

1. A Novice Concession Driver is a licensed driver who has held a licence for a period of less than five years from the date a Grade B licence was first granted.
2. A Novice Concession Driver Claim will be for a five-year period and shall apply from the issue date of the licence to drive in races or until a Novice Concession Driver has driven 50 winners at prime metropolitan race meetings or 200 winners in total, whichever comes first.
3. At the completion of the five year period, a driver who has not driven 50 winners at prime metropolitan race meetings or 200 winners in total , may apply to the licensing steward for an extension of up to 2 years provided, if an extension is granted;
 - a) The driver's performance will be reviewed every 6 months, or more frequently if stewards deem necessary,
 - b) The extension may be cancelled at any time if the driver is not demonstrating a commitment to pursuing a professional driving career.
4. When considering an extension the licensing steward will consider the following:
 - a) Extended periods of injury, or other health issues which caused the driver to be unable to drive in races (including pregnancy)
 - b) Employment circumstances which precluded the driver from being able to pursue a professional driving career
 - c) Other reasons put forward by the driver which indicate a determination and commitment to pursue a professional driving career
 - d) The licensing Steward will also consider reports from other stewards and the Driving Master when considering any application and review.
 - e) Disciplinary records will also be considered when an extension is applied for, and time lost due to suspension may preclude the extension being granted, or reduce the term of the extension.
5. This policy will apply to a driver that is eligible to claim a novice concession at the time of enactment. This policy will not apply to a driver that is not eligible for a novice concession under the policy existing at the time this policy comes into effect.
6. A novice concession can only be claimed in a race where the conditions of the race stipulate.
7. Definitions

- a) "Novice driver" means a licensed driver who is determined to be a Novice Concession Driver by a Controlling Body.
 - b) "Novice Concession Driver concession" means a concession given to a horse in a race whereby it's HWOE are reduced by the Novice Driver's current HWOE Allowance.
8. A horse driven by a Novice Concession Driver claiming a concession shall have its HWOE reduced as determined by the concurrent total of the Driver's race wins being:
 - a) A \$6,500 HWOE (Provincial/Country) or \$3,000 HWOE (Community) concession for Novice Concession Drivers with 0 – 200 lifetime wins ***
 - b) A \$15,000 HWOE (Metropolitan) concession for Novice Concession Drivers with 0 – 50 lifetime Metro wins ***
 - c) *** for the purposes of calculating a novice concession, a dead-heat for first placing shall not count as a win
9. To obtain a Novice Concession Claim in a race, the trainer of the horse must signify at the time of nomination that a novice concession is being claimed.
10. Notification of a specified Novice Concession Drivers for the purpose of a novice concession claim shall be made PRIOR TO Acceptance Time for the race meeting.
11. Where a Novice Concession Driver engaged to drive a horse with a novice concession allowance is unable to fulfil the driving engagement;
 - a) A replacement Novice Concession Driver shall be engaged to drive the horse.
 - b) Provided that where betting on the race has started the driver selected under clause (a) shall be of comparable ability to the replaced driver.
 - c) Where a suitable replacement Novice Concession Driver is not available the horse shall be withdrawn from the race without penalty.
12. When a Novice Concession Driver exceeds the maximum number of lifetime wins permitted for a concession claim and has further driving engagements, the driver will be permitted to claim the relevant concession/s for the remainder of such meeting and any other subsequent meetings where drivers have already been declared as per the advertised driver declaration deadline for the meeting.
13. When a Novice Concession Driver utilises a concession claim in a Heat and the horse he/she drives in the Heats qualifies for the Final, such driver will be eligible to claim that concession in the Final on the same horse even if such driver has won his/her final win for the respective concession claim.
14. If a horse races prior to Acceptance Time for a meeting thereby having its HWOE increased, then provided that such race is one in which a concession may be claimed, a Novice Concession Driver who is eligible to claim a concession may be engaged for, or substituted for, the engaged driver of such horse prior to Acceptance Time.

MARES ALLOWANCE

1. Unless stipulated otherwise, a mare nominated for a race not already restricted to mares shall be automatically granted a Mares Allowance
2. A Novice Concession Driver claim may not be utilised on a mare which has already benefited from a Mares Allowance.
3. A Mares Allowance can only be claimed in a race where the conditions of the race stipulate

STAKEMONEY DISTRIBUTION

RWWA will pay stakemoney for all races in Western Australia, except where otherwise advertised, in the following manner:

Stakemoney is split between owners, trainers and drivers as follows:

- a) Owners 87.5%
- b) Trainers 7.5%
- c) Drivers 5%

1. Stake money payment runs occur every Friday and include stakes payments to owners, trainers and drivers relating to race meetings conducted between the previous Friday through to the Thursday.
2. Stakes payments for races with prize monies exceeding \$30,000 are held until results from swabs are cleared. Upon being given the all clear to pay, the stake payments are released the following day.
3. Stakes payments are made to the Managing Owner only.

Drivers Percentages & Fees

The Drivers fee is 5% of the total race prize money for drivers finishing first through to fifth. All other drivers receive a \$70 fee per race drive.

Trainers Percentage

Trainers with runners placed 1st through to 5th receive 7.5% of the prize money on offer.

Owners

Due to the unplaced starters' payment, which is treated as stake money, the stake money percentages are dependent upon total race stakes.

STAKEMONEY PERCENTAGES BY PLACING (Maximum 10 Starters)

| Total Stake | 1st | 2nd | 3rd | 4th | 5th |
|-------------------------|------------|------------|------------|------------|------------|
| \$4,500 | 56.93 | 15.56 | 7.56 | 5.51 | 3.33 |
| \$7,000 | 59.48 | 16.25 | 7.89 | 5.76 | 3.48 |
| \$7,500 | 59.78 | 16.33 | 7.93 | 5.79 | 3.50 |
| \$9,000 | 60.49 | 16.53 | 8.03 | 5.85 | 3.54 |
| \$10,000 | 60.85 | 16.62 | 8.07 | 5.90 | 3.56 |
| \$15,000 - \$29,999 | 60.45 | 16.74 | 8.37 | 4.64 | 2.80 |
| \$30,000+ | 64.00 | 16.00 | 7.00 | 4.00 | 2.00 |
| | | | | | |
| Nights of Thunder Heats | 60.45 | 16.74 | 8.37 | 4.64 | 2.80 |
| Nights of Thunder Final | 64.00 | 16.00 | 7.00 | 4.00 | 2.00 |

OFFICIAL TRIALS

1. A RWWA Official Trial Supervisor or RWWA Steward must be present for all Official Trials.
2. An Ambulance and Clerk of the Course (Catcher) must be present for all Official Trials.
3. Drivers are required to wear full race attire including approved vests and helmets, registered colours and white driving pants.
4. Trial Supervisors must submit trial results the following business day and they must be accurate and complete. Supervisors must sign off that trials have been conducted in accordance with this policy.

Eligibility to trial

1. A horse is not eligible to trial unless it is registered, been in the care of a licenced trainer for at least the previous 28 days and a stable return has been lodged.
2. A horse is not eligible to trial if it is currently under a stand-down, such as for a veterinary certificate.
3. A horse must have attained the age of two years old and be named to be eligible to compete in a Qualifying or Official Trial.
4. All horses competing in official trials must have their freeze brand checked against their Registration Certificate or official records of RWWA.
5. Any horse whose identification cannot be established will be withdrawn from the trial.

Nomination for trials

1. A late nomination for trials may be accepted for a horse barred from racing after the deadline for the nominations for the trials has passed provided the horse is presented for inspection to the Stewards/Trial Supervisor no later than 30 minutes prior to the first trial and the horses' Registration Certificate is provided.

In order to qualify or re-qualify,

1. A minimum of four horses must contest the trial, unless otherwise approved by the Stewards.
2. In a mobile qualifying trial, a horse must score up in its correct gait and/or without causing interference to other horses, be in its correct barrier positions and within one metre of the mobile barrier by the candy pole and the start.
3. The horse must then complete the trial in a competitive manner running the qualifying times below, displaying satisfactory manners.
4. In a standing start qualifying trial, a horse must not delay the start through intractability and leave the barrier at the correct gait. The horse must then complete the trial in a competitive manner running the qualifying times below, displaying satisfactory manners.
5. When a horse is trialling to qualify or re-qualify and breaks gait through waywardness, displays unsatisfactory barrier manners and/or fails to run a mile rate within the qualifying time, it shall not be qualified or re-qualified.
6. If a horse has previously qualified in a mobile trial, it may qualify for standing start races by performing a satisfactory 'jump-out'. (A 'jump-out' means a demonstration of satisfactory barrier manners by the horse and for it to be placed under pressure and maintain its gait for a minimum of 200 metres after the start)
7. Any horse barred from racing until it completes a number of satisfactory trials shall not be trialled on the day the bar is imposed or trialled twice on the same day, for the purpose of having the bar removed.
8. Only the horse's first trial on any day shall be counted as one official trial toward the bar being removed.
9. Where a horse is barred to more than one satisfactory trial, the satisfactory trials must be completed consecutively before the bar will be removed.
10. On tracks where there are two (2) rows of runners in an Official Trial, horses that are qualifying or re-qualifying should start from the front row.
11. The following minimum mile rates for each individual horse will be observed in order to qualify or re-qualifying in official trials. Trial Supervisors may vary the qualifying time to accommodate adverse track or weather conditions.

| Age | Gait | Start | Group A | Group B | Group C |
|------|---------|--------|---------|---------|---------|
| 2YO | Pacer | Stand | 2:06 | 2:08 | 2:10 |
| 2YO | Pacer | Mobile | 2:04 | 2:06 | 2:08 |
| 3YO+ | Pacer | Stand | 2:04 | 2:06 | 2:08 |
| 3YO+ | Pacer | Mobile | 2:02 | 2:04 | 2:06 |
| 2YO | Trotter | Stand | 2:12 | 2:14 | 2:16 |
| 2YO | Trotter | Mobile | 2:10 | 2:12 | 2:14 |
| 3YO+ | Trotter | Stand | 2:08 | 2:10 | 2:12 |
| 3YO+ | Trotter | Mobile | 2:06 | 2:08 | 2:10 |

Group A – Gloucester Park, Pinjarra, Bunbury

Group B – Albany, Bridgetown, Byford, Central Wheatbelt, Narrogin, Wagin, Wanneroo, Northam

Group C – Busselton, Collie, Williams.

Re-included in barrier draw

To be re-included in the barrier draw a horse shall:

1. Complete the required number of consecutive satisfactory race or trial starts from the mobile barrier. For a start to be considered satisfactory the horses must score up in its correct gait, without causing interference to other horses, be in its correct barrier position and within one metre of the mobile barrier by the candy

pole and the start. The horse must then leave the barrier satisfactorily and be placed under pressure for at least 200 metres after the start.

2. Complete the required number of consecutive race or trial starts in standing start events from a barrier position which requires the horse to be facing the barrier strand. For a start to be considered satisfactory a horse must not delay the start through intractability and leave the barrier at the correct gait and remain in that gait for at least 200 metres after the start.
3. When eligible for re-inclusion in the barrier draw, the trainer must make application to the RWWA Stewards for the ODM or ODS to be removed.

ALLOCATION OF FIELD SELECTION POINTS

1. To determine a horses total Field Selection Points the horse's last five points scoring performance are added together, discarding the lowest points scoring performance so that the total of the remaining four points becomes the horses Total Field Selection Points used.
2. Horses will be allocated Field Selection Points (FP) in accordance with the following table:

Field Selection Points Selection Table

| Placing | 1 | 2 | 3 | 4 | 5 | 6 | 7 | 8 | 9 | 10-12 |
|--|----|----|----|----|---|---|---|---|---|-------|
| Metropolitan Stakes Races - Field Selection Points | 14 | 12 | 11 | 10 | 9 | 8 | 7 | 6 | 5 | 4 |
| All other Stakes Races - Field Selection Points | 10 | 8 | 7 | 5 | 5 | 4 | 3 | 2 | 1 | 0 |

1. A horse will be awarded 6 Field Selection Points for any ballot it receives.
2. The points gained from a ballot will replace the most recent lowest points scoring start, provided the ballot points are greater than the lowest points scoring start within the horses Form Points.
3. Points will be credited to a horse's Field Selection Points total after the running of the race meeting from which the horse has been balloted.
4. This will not be applicable under the following scenarios:
 - a) when a horse has an unfulfilled engagement;
 - b) when a horse is a late nomination;
 - c) when a horse is deemed ineligible at acceptance time;
 - d) when a horse is balloted from a race having gained a start in another race on the same day;
 - e) when a horse is balloted from a race having already been balloted from another race on the same day;
 - f) if the horse is declared an emergency but is scratched;
 - g) if the race is declared a 'no-race' or is abandoned;
 - h) if the horse has already received ballot points in the past six days or has gained a start in the past six days
 - i) if the horse gains a start in the five days following the date of the meeting from which they were balloted
5. No Ballot points shall be allocated where a horse is balloted from a Metropolitan Stakes race.
6. When a horse qualifies to race it will be initially allotted 24 Field Selection Points. The point score of a newly qualified horse will then be calculated in the same manner as for a horse with a racing history.

Example:

Horse qualifies and earns 24 points as above

| Race Position | Points Earned | Calculation | Lowest Points Discarded | Total Form Points |
|----------------------|----------------------|--------------------|--------------------------------|--------------------------|
| Qualifies | 24 | 6 6 6 6 | - | 24 |
| 9 th | 1 | 6 6 6 6 1 | 1 | 24 |
| 7 th | 3 | 6 6 6 1 3 | 1 | 21 |
| 1 st | 10 | 6 6 1 3 10 | 1 | 25 |
| 8 th | 2 | 6 1 3 10 2 | 1 | 21 |
| 12 th | 0 | 1 3 10 2 0 | 0 | 16 |
| 2 nd | 8 | 3 10 2 0 8 | 0 | 23 |

7. A horse imported into WA from another Australian jurisdiction or from a country other than Australia will have its HWOE and Field Selection Points allocated as if the horse had competed in its races in WA.
8. Unless otherwise stipulated in the conditions of a race, where the race stake is \$6,000 or more the required number of horses will be selected from the horses with the highest field selection points (FSP), provided;
 - a) a horse with lower points may be selected for one of the final three places in a field where it is the handicapper's opinion the selection of the horse will overcome an anomaly caused by the calculation of the horse's field selection points score, and
 - b) Where the race stake is less than \$6,000 the handicapper may also consider the selection of a horse with lower points which has been balloted from at least four (4) race meetings and has not started for at least twenty eight (28) days.
9. Preference in the selection of a horse under sub-clause 8 (b) will be given to the horse with the highest point score and the longest period in excess of 28-days between race starts.
10. Where two or more horses meet a preference or selection criteria the preference or selection will be decided by ballot.

FIELD SELECTION

1. All Metropolitan Stakes races will be selected by the RWWA Handicapping Panel. The Automatic Field Selection System and the Unfulfilled Engagement rule are not applicable.
2. A Field Selection Panel will be established to select fields for all races rated Group One or Group Two.
3. In selecting fields for Group Races the Handicapping Panel will give consideration to the following:
 - Current season win dollars
 - Stake money earned in last five starts
 - Current form (last 5 race starts)
 - Lifetime performance.

When considering form the Panel will be mindful of the class of races competed in, the quality of the opposition and the circumstances of each race (barrier draw, interference received etc.)

In selecting a field the Handicapping Panel has absolute discretion to apply whatever weighting they consider appropriate to each of the above.

4. All Provincial and Country classified race meetings shall be selected by the Automatic Field Selection System. Where the race has more acceptors than the maximum field size and none of the acceptors have raced, field selection preference will be based on displayed form in Official Trials.
5. Unless otherwise permitted by RWWA, a horse shall only be selected to start in one race at a meeting where TAB betting is permitted.
6. A horse shall not be selected to start at more than one race meeting on any day.
7. Trotters will not be selected to compete in races with pacers.
8. A horse is deemed to have an unfulfilled engagement when it is declared an acceptor in a race, provided it has not been declared an emergency in the race or is declared an acceptor in a Metro Stakes race.
9. A horse which has an unfulfilled engagement will only be selected for another race after horses which do not have an unfulfilled engagement have been selected

10. RWWA has the utmost power to deal with any matter arising, whether or not such matter is specifically covered in the conditions of a race. Any decision by RWWA shall be final and conclusive and binding on all parties.
11. A horse must be nominated for a race by the prescribed time to be eligible for selection in the field.
12. Unless otherwise specified, the conditions for a race also apply to the Consolation of a race. The decision to declare acceptors for a Consolation will depend upon there being sufficient suitable acceptors.

13. Community Race Meetings

Fields for Community race meetings will be selected in accordance with the following:

1. Not Eligible winners of 2 or more races with stakes > \$4,500 in their last 10 starts,
2. Not Eligible winners of 1 or more race(s) with stakes > \$14,999 in their last 10 starts,
3. Not Eligible placegetters in 1 or more race(s) with stakes > \$14,999 in their last 5 starts.

Preference in field selection will be given to Horses with L5\$ LT\$5,500 with the balance of the field to be selected on L5\$ in ascending order (i.e. lowest to highest). In Standing start races this preference applies to each handicap mark.

A horse cleared from another jurisdiction with \$0 stakemoney in their unplaced non-WA starts within their L5, will be deemed to have earned \$100 unplaced stakes for each such start.

As part of a rotation some mobile race fields will be selected entirely on L5\$ in ascending order with horses with 5+ WA starts selected first then horses with LT 5 WA starts in descending number of starts. In some Standing Start races for each handicap mark the field will be selected on L5\$ in ascending order with horses with 5+ WA starts selected first then horses with LT 5 WA starts in descending number of starts.

(Effective 2/11/19)

14. Busselton Field Selection Policy

Busselton is unique in that it is a Standing Start venue only therefore warranting special consideration.

Fields for Busselton only will be selected in accordance with the following:

Preference in field selection will be given to Horses with L5\$ LT\$5,500 with the balance of the field to be selected on L5\$ in ascending order (i.e. lowest to highest). This preference applies to each handicap mark.

A horse cleared from another jurisdiction with \$0 stakemoney in their unplaced non-WA starts within their L5, will be deemed to have earned \$100 Unplaced Stakes for each such start.

A horse which has:

- Won 2 or more races with Stakes > \$4,500 in their last 10 starts,
- Won 1 or more race(s) with stakes > \$14,999 in their last 10 starts,
- Been placed in 1 or more race(s) with stakes > \$14,999 in their last 5 starts,

will not be selected ahead of a horse which has not.

As part of a rotation some race fields, for each handicap mark, will be selected entirely on L5\$ in ascending order with horses with 5+ WA starts selected first then horses with LT 5 WA starts in descending number of starts. *(Effective 14th November 2019).*

DELETION OF RACES

1. If after final acceptances a programmed race has less than nine (9) acceptors, such race may be deleted and another programmed race with sufficient acceptors divided and held in substitution.
2. A race cannot be run with less than nine (9) acceptors, except in the instance of sustaining the viability of a race meeting proceeding.
3. No other race will be run except as detailed below;
 - a. Races for horses aged 2 years old will be conducted with not less than:
 - i. Five (5) acceptors for the period 1st January to 31st March
 - ii. Nine (9) acceptors for the period 1st April to 31st August
4. Notwithstanding, the Manager Harness Racing (MHR) may grant approval to draw a race with less than the desired minimum number of acceptors after taking into account factors including;
 - a) Alternate racing opportunities.
 - b) The numbers of acceptors in other races at the meeting,
 - c) The effect on wagering turnover.
 - d) Other factors considered relevant by the MHR.

DIVISION OF RACES

1. A programmed race may be divided where another programmed race/s has insufficient acceptors to conduct the race/s.
2. The practice whereby preference in field selection is given to a horse already nominated will not apply when a race is divided after nominations for the race have been extended.
3. The decision to divide a race will be based on the following criteria;
 - a. The maximization of wagering turnover.
 - b. The number of acceptors for the race.
 - c. The quality of the acceptors for the race.
 - d. Available stake distribution.
 - e. Available breeding incentive bonus.
 - f. The impact on nominations for a subsequent meeting.
4. The selection of the horses for each division will be based on each horse's HWOE, with the number of available horses being split so as to maximize the field size of each division.
5. The required number of horses with the highest HWOE will be selected for the first race.
6. The same principle will apply if there are sufficient nominations to draw a third race.
7. The selection of a horse for a position in a field when two or more horses have the same HWOE will be decided by the highest dollars won in last five starts and then by ballot.
8. The following procedure will apply in the separation of horses where a race is advertised as being for heats of a final;
 - a. Horses will be listed in descending order of Field Selection Points and numbered accordingly
 - b. If there are two heats horses 1,3,5,7,9,11,13,15,17,19,21,23 will draw in heat one and numbers 2,4,6,8,10,12,14,16,18,20,22,24 will draw in heat two.
 - c. If there are three heats horses 1,4,7,10,13,16,19,22,25,28,31,34 will draw in heat one, horses 2,5,8,11,14,17,20,23,26,29,32,35 in heat two and horses 3,6,9,12,15,18,21,24,27,30,33,36 in heat three. The same methodology will apply if there are more than three heats

STANDING START HANDICAPS

1. Standing Start races shall be run as either a Handicap Stand or a Conditioned Stand
2. Handicap Stands has defined handicaps which roughly reflect a win for each 10 metres at the particular circuit at which they are programmed
3. Pacers and Trotters will utilise the same scale
4. At Prime Metro both Pacers and Trotters will have a minimum HWOE requirement for eligibility
5. Horses may be nominated out of class but preference in field selection shall be given to horses nominated in their class
6. Novice Driver and Fillies and Mares Concessions are applicable in Standing Start races
7. The Concessions values are as follows;
 - a) \$15,000 @ Prime Metro,
 - b) \$6,500 @ Country/Provincial 2/Provincial 1/Metro Midweek,
 - c) \$3,000 @ Community.

| HANDICAP STAND | | | | |
|----------------|---------|---------|------------|-------|
| COMMUNITY | | | | |
| MARK | FROM | TO | CONCESSION | LEVEL |
| FRONT | 0 | 0 | 0 | 1 |
| 10 METRES | 1 | 2,999 | 0 | 2 |
| 20 METRES | 3,000 | 5,999 | 8,999 | 3 |
| 30 METRES | 6,000 | 8,999 | 11,999 | 4 |
| 40 METRES | 9,000 | 11,999 | 14,999 | 5 |
| 50 METRES | 12,000 | 18,499 | 21,499 | 6 |
| 60 METRES | 18,500 | 24,999 | 27,999 | 7 |
| 70 METRES | 25,000 | 32,499 | 35,499 | 8 |
| 80 METRES | 32,500 | 39,999 | 42,999 | 9 |
| 90 METRES | 40,000 | 54,999 | 57,999 | 10 |
| 100 METRES | 55,000 | 69,999 | 72,999 | 11 |
| 110 METRES | 70,000 | 84,999 | 87,999 | 12 |
| 120 METRES | 85,000 | 99,999 | 102,999 | 13 |
| 130 METRES | 100,000 | 129,999 | 132,999 | 15 |
| +10 METRES | 30,000 | | | 15 |

| HANDICAP STAND | | | | |
|--|---------|---------|------------|-------|
| COUNTRY/PROVINCIAL 1 & 2/MIDWEEK METRO | | | | |
| MARK | FROM | TO | CONCESSION | LEVEL |
| FRONT | 0 | 0 | 0 | 1 |
| 10 METRES | 1 | 5,999 | 0 | 3 |
| 20 METRES | 6,000 | 11,999 | 18,499 | 5 |
| 30 METRES | 12,000 | 18,499 | 24,999 | 6 |
| 40 METRES | 18,500 | 24,999 | 31,499 | 7 |
| 50 METRES | 25,000 | 32,499 | 38,999 | 8 |
| 60 METRES | 32,500 | 39,999 | 46,499 | 9 |
| 70 METRES | 40,000 | 54,999 | 61,499 | 10 |
| 80 METRES | 55,000 | 69,999 | 76,499 | 11 |
| 90 METRES | 70,000 | 84,999 | 91,499 | 12 |
| 100 METRES | 85,000 | 99,999 | 106,499 | 13 |
| 110 METRES | 100,000 | 129,999 | 136,499 | 15 |
| +10 METRES | 30,000 | | | 15 |

| HANDICAP STAND | | | | |
|------------------------|-------------|-----------|-------------------|--------------|
| PRIME METRO | | | | |
| MARK | FROM | TO | CONCESSION | LEVEL |
| FRONT | 20,000 | 39,999 | 0 | 9 |
| 10 METRES | 40,000 | 54,999 | 69,999 | 10 |
| 20 METRES | 55,000 | 69,999 | 84,999 | 11 |
| 30 METRES | 70,000 | 84,999 | 99,999 | 12 |
| 40 METRES | 85,000 | 99,999 | 114,999 | 13 |
| 50 METRES | 100,000 | 129,999 | 144,999 | 15 |
| +10 METRES | 30,000 | | | 15 |
| NOT ELIGIBLE LT 20,000 | | | | |

| CONDITIONED STAND | | | | |
|-----------------------|---------|---------|------------|-------|
| COMMUNITY | | | | |
| MARK | FROM | TO | CONCESSION | LEVEL |
| FRONT | 0 | 0 | 0 | 1 |
| 10 METRES | 1 | 2,999 | 0 | 2 |
| 20 METRES | 3,000 | 5,999 | 8,999 | 3 |
| 30 METRES | 6,000 | 11,999 | 14,999 | 5 |
| 40 METRES | 12,000 | 24,999 | 27,999 | 7 |
| 50 METRES | 25,000 | 39,999 | 42,999 | 9 |
| 60 METRES | 40,000 | 69,999 | 72,999 | 11 |
| 70 METRES | 70,000 | 99,999 | 102,999 | 13 |
| 80 METRES | 100,000 | 149,999 | 0 | 15 |
| +10 METRES | 50,000 | | | |
| NOT ELIGIBLE 150,000+ | | | | |

| CONDITIONED STAND | | | | |
|--|---------|---------|------------|-------|
| COUNTRY/PROVINCIAL 1 & 2/MIDWEEK METRO | | | | |
| MARK | FROM | TO | CONCESSION | LEVEL |
| FRONT | 0 | 0 | 0 | 1 |
| 10 METRES | 1 | 5,999 | 0 | 3 |
| 20 METRES | 6,000 | 11,999 | 18,499 | 5 |
| 30 METRES | 12,000 | 24,999 | 31,499 | 7 |
| 40 METRES | 25,000 | 39,999 | 46,499 | 9 |
| 50 METRES | 40,000 | 69,999 | 76,499 | 11 |
| 60 METRES | 70,000 | 99,999 | 106,499 | 13 |
| 70 METRES | 100,000 | 149,999 | 156,499 | 15 |
| 80 METRES | 150,000 | 199,999 | 206,499 | 15 |
| 90 METRES | 200,000 | 249,999 | 0 | 15 |
| +10 METRES | 50,000 | | | 15 |
| NOT ELIGIBLE 250,000+ | | | | |

| CONDITIONED STAND | | | | |
|-------------------|---------|---------|------------|-------|
| PRIME METRO | | | | |
| MARK | FROM | TO | CONCESSION | LEVEL |
| FRONT | 20,000 | 39,999 | 0 | 9 |
| 10 METRES | 40,000 | 69,999 | 84,999 | 11 |
| 20 METRES | 70,000 | 99,999 | 114,999 | 13 |
| 30 METRES | 100,000 | 149,999 | 164,999 | 15 |
| 40 METRES | 150,000 | 199,999 | 214,999 | 15 |
| 50 METRES | 200,000 | 249,999 | 264,999 | 15 |
| +10 METRES | 50000 | | | 15 |
| NOT ELIGIBLE | LT | | | |

PRE-PURCHASE HORSE ASSESSMENT & STEWARDS STATUS CHECK

Persons who are considering purchasing a horse from interstate or overseas to race in Western Australia are encouraged to contact the Harness Racing Office (08) 9445 5267 prior to purchase and obtain the horse's Western Australian HWOE Level and whether or not there are any Steward's bars applicable (i.e. ODM/S barred to trials etc.). Due to differences in handicapping systems the horse's assessment/classification in another jurisdiction maybe significantly different to what it may be in WA.

RACE MEETING PROGRAMMING

1. The programming of races during a racing season will strive to provide reasonable racing opportunities for each age group and class of horse whilst maximizing the potential for wagering turnover.

METROPOLITAN STAKED MEETINGS

1. Races restricted to fillies and/or mares will be programmed at each meeting (includes races for 2 and 3 year-old fillies).
2. A race will be programmed at each meeting restricted to horses with HWOE LT \$40,000
3. Races restricted to 2 year-olds will be programmed from 1st January to 31st August each year at 50% of meetings.
4. Races restricted to 3 year-olds will be programmed at not less than 50% of meetings each year.
5. A race with the condition "Open to any Pacer" will be programmed at each meeting except where such race would adversely affect the nominations for a race with a stake of \$30,000 or higher at an adjacent meeting conducted at a country venue.
6. Not less than one metropolitan staked race for trotters will be programmed every four weeks.

ALL OTHER MEETINGS

1. At venues where mobile racing is permitted, apart from Gloucester Park, a race will be programmed for horses with HWOE = \$0 (ie Maidens)
2. Races restricted to 3 year-olds will be programmed at not less than 50% of meetings each year.
3. Races restricted to 2 year-olds may be programmed at meetings from 1st January.
4. Races restricted to 2 year-olds will be programmed at not less than 50% of meetings after 31st January to 31st August each year.
5. A minimum of one non-Metropolitan Staked race for trotters will be programmed each week.

FIELD SIZE AND NUMBER OF RUNNERS ON A LINE

The following minimum field sizes will apply to all tracks

1. Races for horses aged three years old or older will be conducted with not less than nine (9) acceptors
2. Races for horses aged 2 years old will be conducted with not less than:
 - a) Five (5) acceptors for the period 1st January to 31st January
 - b) Nine (9) acceptors for the period 1st March to 31st August
3. Notwithstanding the above the Manager Harness Racing (MHR) or in the absence of the MHR the delegated representative of the MHR may grant approval to draw a race with less acceptors after taking into account factors including:
 - a) Alternate racing opportunities
 - b) The numbers of acceptors in other races at the meeting
 - c) The effect on wagering turnover
 - d) Other factors considered relevant by the MHR.
4. In a standing start race at venues where the field size is restricted to 10 runners there shall be a maximum of 5 runners on each handicap mark, provided that;
 - a) At Collie there shall be a maximum of 5 runners on any line on each handicap mark.

- b) At Busselton shall be a maximum of 4 runners on any handicap mark.
5. In a standing start race at venues where the field size is restricted to 12 runners there shall be a maximum of 6 runners on each handicap mark.
 6. A standing start race restricted to 2-year-olds shall be restricted to 10 runners with the number of runners on each handicap mark in accordance with clause 1 above.
 7. In a mobile start race at venues where the field size is restricted to 10 runners there shall be 6 runners on the front line and 4 on the second line with the exception of Williams and Collie where there shall be 5 runners on the front line and 5 on the second line.
 8. In a mobile start race at Gloucester Park there shall be 9 runners on the front line and 3 on the second line except for the Nights Of Thunder Series which shall have a maximum field size of 9 with a mobile start format of 9 across the front line.
 9. In a mobile start race at Pinjarra, Bunbury and Northam there shall be 7 runners on the front line and 5 on the second line.
 10. In a mobile start race restricted to 2year olds and conducted between 1st January and 31st May the field size shall be restricted to 10 runners with 6 runners on the front line and 4 runners on the second line except at:
 - a) Pinjarra, Bunbury and Northam where there shall be 7 runners on the front line and 3 runners on the second line;
 - b) Gloucester Park where there shall be 9 runners on the front line and 1 runner on the second line
 11. As from 1st June the field sizes for two year olds racing at
 - a) Pinjarra, Bunbury and Northam will be extended to 12 runners with 7 runners on the front line and 5 on the second line
 - b) Gloucester Park will be extended to 12 runners with 9 runners on the front line and 3 runners on the second line.

Maximum field size and number of horses to start on any line in a mobile start race and handicap mark in a standing start race

| Venue | Mobile | Stand | Mobile | Stand |
|-------------------|--------|-------|--------|-------|
| Gloucester Park | 12 | 12 | 9 x 3 | 6 |
| Albany | 10 | 12 | 6 X 4 | 6 |
| Bridgetown | 10 | 12 | 6 X 4 | 6 |
| Bunbury | 12 | 12 | 7 X 5 | 6 |
| Busselton | n/a | 10 | n/a | 4 |
| Central Wheatbelt | 10 | 12 | 6 X 4 | 6 |
| Collie | 10 | 10 | 5 X 5 | 5 |
| Narrogin | 10 | 12 | 6 X 4 | 6 |
| Northam | 12 | 12 | 7 X 5 | 6 |
| Pinjarra | 12 | 12 | 7 X 5 | 6 |
| Wagin | 10 | 12 | 6 X 4 | 6 |
| Williams | 10 | 12 | 5 X 5 | 6 |

PREFERENTIAL BARRIER DRAW WEIGHTING

| Start Format | Weighting | | | | | | | | | | | |
|--------------|-----------|---|---|---|----|----|---|----|---|----|----|----|
| 9 X 3 | 1 | 2 | 3 | 4 | 10 | 11 | 5 | 6 | 7 | 12 | 8 | 9 |
| 7 X 5 | 1 | 2 | 3 | 4 | 8 | 9 | 5 | 10 | 6 | 7 | 11 | 12 |
| 6 X 4 | 1 | 2 | 3 | 4 | 7 | 8 | 5 | 6 | 9 | 10 | | |

DRAW FOR BARRIER POSITIONS

Pursuant to Rule 131 the following applies to the process for drawing barrier positions.

1. A draw for barrier position may be conducted by utilising the HaRVey operating system computerized barrier draw or by utilising a manual procedure.
2. A manual barrier draw will be conducted for all races with stake money of \$50,000 or more. Generally these will be conducted at the Offices of RWWA unless otherwise stipulated. Contact RWWA Racing Office for details of specific draws
3. A manual draw for barrier positions will be performed as follows;
 - a) List the horse names for the race in alphabetical order and number each horse starting at one.
 - b) Allocate two separate sets of numbers equivalent to the number of horses requiring a barrier position.
 - c) Place each set of numbers in separate receptacles to facilitate blind selection of the numbers from the receptacle.
 - d) Draw a number from one receptacle and identify the number, which will then be allocated to the corresponding numbered horse.
 - e) Draw a number from the other receptacle and identify the number, which will then be allocated as the barrier number for the horse name called at clause 2(d) above.
 - f) Follow the same process until each horse has a barrier number.
 - g) The same procedure applies to a manual random or preferential draw for barrier positions.
4. In accordance with Rule LR134, a horse excluded from the draw in mobile start races shall be allocated the highest weighted barrier position in accordance with the start format of the race whether or not the conditions of the race stipulate that the draw for barrier positions must be decided by preference.
5. Notwithstanding clause 3 above, where there is more than one horse excluded from the draw in the race the barrier positions for the horses excluded from the draw will be decided by lot in the case of a random draw or by preference in the case of a preferential draw, and ODM horse will be drawn inside RODM horses.
6. In the event of an error or omission affecting the draw for barrier positions for a race after the declaration of acceptances for the race, the discretion provided by Rule 132 (2) may only be exercised in accordance with Regulation 133.
7. Notwithstanding the provisions of clause 2 above the Controlling Body may approve an alternate method of conducting the draw for barrier positions for a race.

BARRIER POSITIONS AFTER SCRATCHING

1. Under the provisions of Rule 131, when a horse is withdrawn from a race the barrier lines do not change and the remaining horses on a line move down to fill the vacated barrier position.
2. Except as provided for in Regulation 133 and Rule 134(7), in a race where barrier positions are decided by a preferential draw, the barrier position of a horse shall not be changed after the draw for positions is completed.

COLOURS

Horses shall only race in the registered colours of either the owner or trainer as nominated on a Stable Return lodged by the trainer.

1. In the event that two or more horses are scheduled to start in the same set of nominated trainer's colours the following procedure shall be followed in order to ensure no horses start in identical colours
 - a) Firstly, by utilising the trainer's second or subsequent set of registered colours being used on the starter with the highest barrier number
 - b) Secondly, by utilising the registered colours of the owner of the second or subsequent starter – provided that the Harness Office can verify that the trainer is in possession of the colours
 - c) Thirdly, by utilising the registered club colours of the club conducting the race
2. In the event that two or more horses are scheduled to start in the same set of nominated owner's colours the following procedure shall be followed in order to ensure no horses start in identical colours

- a) Firstly by utilising the owner's second or subsequent set of registered colours on the starter with the highest barrier numbers – provided that the Harness Office can verify that the trainer is in possession of the colours
- b) Secondly by utilising the trainer's colours or second set of trainer's colours
- c) Thirdly, by utilising the registered club colours of the club conducting the race
3. Notwithstanding the above, the stewards may give such directions as they think fit about the colours to be worn or advertising to be displayed in a race

COUNTRY COUNCIL DERBY, COUNTRY DERBY AND COUNTRY OAKS

The following policy applies to a Country Council Derby, Country Oaks and Country Derby conducted after 1 July 2019.

1. To be eligible for a Country Council Derby, Country Oaks and the Country Derby a horse must be:
 - a) Westborn, and
 - b) Only trained outside the "prescribed-radius" from the 1st September of the Derby season as determined by Stable Returns lodged with RWWA.
 - c) Driven by a licensed driver who is domiciled outside the "prescribed radius".
2. Preference in field selection for a Country Council Derby will be given to;
 - a) Firstly a horse stabled and trained in the Council district in which the Country Council Derby is conducted.
 - b) Secondly a horse which has been balloted from a Country Council Derby.
 - c) Thirdly a horse which has not been placed 1st, 2nd or 3rd in a Country Council Derby.
3. Preference in field selection for the Country Derby will be given to;
 - a) Four horses with the highest win dollars for the current season.
 - b) Four horses with the highest stakemoney earned in their last five (5) starts, provided a horse selected under clause (a) is excluded from selection under this clause.
 - c) The balance of the field will be selected at the discretion of the Field Selection Panel.
4. For the obviation of doubt a horse is deemed to be trained in a particular council area determined by the nearest racecourse or official training centre to where it is stabled and each Council area is delineated as follows;
 - a) South West Council race courses/training centres; Bunbury, Bridgetown, Busselton, Collie, Harvey and Pinjarra.
 - b) Great Southern Council race courses/training centres; Albany, Narrogin, Wagin and Williams.
 - c) North Eastern Council race courses/training centres; Central Wheatbelt, Golden Mile, York and Northam.
5. Subject to clause 1 (c) of this policy a person must hold a;
 - a) Grade A or B driver's licence to drive in a Country Council Derby.
 - b) Grade A driver's licence to drive in the Country Derby/Country Oaks provided a person who holds a Grade B licence may drive in the Country Derby/Country Oaks with the prior written approval of the Chief Steward Harness.
6. Notwithstanding the provisions of Rule 119A, without losing its eligibility for a Country Council Derby, Country Derby or Country Oaks a horse may after 1st September of the Country Derby season:
 - a) Compete in a race or trial conducted in the metropolitan area provided it is returned to its stable outside the prescribed radius within 48-hours of competing; and/or
 - b) transferred to a different trainer outside the prescribed radius provided a fresh Stable Return is lodged within the prescribed time, and/or
 - c) Be re-located to and race in another Council area provided that it remains in the care of a trainer domiciled outside the prescribed radius
7. No breeding bonus incentive is payable for the Country Oaks or the Country Derby.
8. Definitions
 - a. "Prescribed Radius" means a radius of 50 kilometres from the Perth GPO.
 - b. "Westborn" means a horse foaled, notified and branded in Western Australia.

POSTPONED MEETINGS

1. When a meeting on which TAB betting is conducted is postponed the following shall apply:
 - a) Where possible the decision to postpone shall be made on the day of the meeting by 2:00 p.m. in the case of a night meeting and 4-hours prior to first race in the case of a daylight meeting.
 - b) The decision to postpone shall be made after the consultation between the Steward in Charge of the meeting, the Club conducting the meeting and the SKY Channel.
 - c) The meeting may be postponed to the next available day unless a meeting is already scheduled for that day in which case the meeting shall be abandoned unless otherwise determined by the Controlling Body.
2. Notification of further scratching from a postponed meeting will be extended to the prescribed time on the day on which the meeting is to be conducted.
3. The usual penalties will apply to any scratching made for non-veterinary reasons after 8:30 a.m. on the day on which the postponed meeting is conducted.
4. There will be no penalty for a scratching for non-veterinary reasons from the meeting provided the scratching is made prior to 8:30 a.m. on the day on which the postponed meeting is conducted.

DRIVER AND GEAR CHANGES

The following policy applies pursuant to Rule 210 – Notification of Driver.

1. Notification of a change of driver must be made prior to Driver Notification time for such meeting.
2. The trainer is responsible for ensuring that a notified driver is available.
3. Any alteration to gear for a horse with an upcoming racing engagement must be notified via HarnessWeb or in writing by facsimile 9445 3056 prior to Driver Notification time for such meeting.
4. Except with the Stewards prior approval, a notification of a gear change received after the prescribed time for a horse which has an unfulfilled race engagement, will not be processed until after the race, and the horse will not be permitted to race with/without the gear in the race.
5. At the time a horse is nominated for a race, the person nominating the horse must notify the name of the licensed driver who has been engaged to drive the horse; provided where the horse is to benefit from a novice concession claim the novice concession driver may be nominated in accordance with Policy 14 (2).
6. Any change to the nominated driver after the times mentioned below requires prior approval of the Stewards.
7. Where approval is required for the change of a driver the Stewards may, in granting approval require a replacement driver to be of comparable ability.

RELINQUISHMENT OF THE TRAINING OF A HORSE

1. A trainer shall upon relinquishing the training of a horse immediately give notification of that fact to the Controlling Body in accordance with the provisions of Rule 119.
2. Such notification shall be by way of the lodgment of Harness Web or a fresh Stable Return/Notification of Gear Form indicating the date of relinquishment.
3. A trainer who fails to comply with any provision of the rule is guilty of an offence.

NOTIFICATION OF GELDING OF A HORSE

1. No person shall geld or cause to be gelded a horse without the prior written consent of the owner.
2. A person who has a horse gelded shall notify the Controlling Body of that fact in accordance with the provisions of Rule 100. Such notification shall be by way of the lodgment of a fresh Gear Notification Form indicating the date of gelding.
3. A person who fails to comply with any provision of the rule is guilty of an offence.

WESTBRED BREEDING BONUS CONDITIONS

To be eligible for the *WestBred* scheme a horse must be born, notified, registered and branded in Western Australia.

August 1 2014 saw the introduction of the Double WestBred incentive. A double Westbred eligible horse is a horse foaled, notified, registered, branded and sired by a stallion registered and standing in Western Australia at the time of service.

For eligible horses a WestBred Owner and Breeder bonus is payable on any 2 or 3 year old race where the total advertised stake is less than \$20,000 and where the horse is placed 1st, 2nd, 3rd or 4th.

The Breeder of a WestBred eligible horse foaled after 1st September 2011 will be paid an amount equal to 12.5% of any WestBred Owner Bonus paid on any 2yo or 3yo race as per schedule below. Such amount is over and above the WestBred Bonus and is therefore not subject to any trainer and/or driver percentages.

Bonuses are paid as follows;

- Where the total advertised stake is less than \$15,000

| | | | |
|-----------------------------|---------|------------------------|----------|
| WestBred Owner Bonus Amount | \$3,750 | WestBred 12.5% Breeder | \$468.76 |
| 1st | \$2,550 | 1st | \$318.75 |
| 2nd | \$675 | 2nd | \$84.38 |
| 3rd | \$338 | 3rd | \$42.25 |
| 4th | \$187 | 4th | \$23.38 |

- Where the total advertised stake is between \$15,000 and \$19,999


| | | | |
|----------------------|---------|------------------------|----------|
| WestBred Owner Bonus | \$6250 | WestBred 12.5% Breeder | \$781.26 |
| 1st | \$4.250 | 1st | \$531.25 |
| 2nd | \$1.125 | 2nd | \$140.63 |
| 3rd | \$565 | 3rd | \$70.63 |
| 4th | \$310 | 4th | \$38.75 |

1. The standard trainer and driver percentages are payable on the Owner bonuses paid 1st-3rd places inclusive.
2. Should a Westbred Bonus for 1st place be earned in a 2yo or 3yo race by a Double Westbred eligible horse the Owner and Breeder bonus will be doubled. The Double Westbred Bonus will only apply to the winner and not place-getters.
3. The Breeder of a WestBred eligible horse foaled after 1st September 2008 and winning its first race after 1st September 2014 is entitled to a first win bonus of \$2000.
4. The race-book Owner of a WestBred eligible horse foaled after 1st September 2008 and winning its first race after 1st September 2014 is entitled to a first win bonus of \$2000.
5. The Breeder and Owner first win bonus (as explained in points 3 and 4) are not subject to any trainer and/or driver percentages.
6. Westbred Bonus will NOT be paid on Breeders Crown races.

| WESTBRED REALITY | | | | |
|--|-----------------------|---|------------------------|---|
| Total Amount of Money Available On the Race (Including Stakes and Westbred Bonus Payments) | | | | |
| Effective Race Stakes | | | | |
| Base Stake | Westbred Bonus | Westbred Bonus + 1st Win Bonus | Double Westbred | Double Westbred +1st Win Bonus |
| \$4,500.00 | \$8,718.76 | \$12,718.76 | \$11,587.51 | \$15,587.51 |
| \$7,500.00 | \$11,718.76 | \$15,718.76 | \$14,587.51 | \$18,587.51 |
| \$18,000.00 | \$25,031.26 | \$29,031.26 | \$29,812.51 | \$33,812.51 |

Note: The bonus amounts include the 12.5% Breeder Bonus payments

A portion of every bet, betters harness racing.



Over the last 5 years, TABtouch and RWWA have contributed over \$120 million into harness racing prize money.

Applies to August 2014 - July 2018. Gamble responsibly. Call Gambling help on 1800 858 858 or visit www.gamblinghelponline.org.au.

TABtouch
Better your bet